

How to install cable trays with varying spans





How to install cable trays with varying spans



Best practice guide to cable ladder and cable tray

Cable ladder and cable tray systems The following recommendations are intended to be a practical guide to ensure the safe and proper installation of

Beama Best Practice Guide , Installation Of The System , Cable

The following recommendations are intended to be a practical guide to ensure the safe and proper installation of cable ladder and cable tray systems and channel support and other support systems.



Master Cable Tray Installation: A Professional Step-by

Learn how to install cable trays for large-scale projects with our professional, step-by-step guide covering industry standards, safety protocols,

Cable Tray Spacing Standards for Installation and Safety

Key Factors Impacting Cable Tray Spacing Understanding cable tray spacing is key to meeting safety regulations and maintaining system

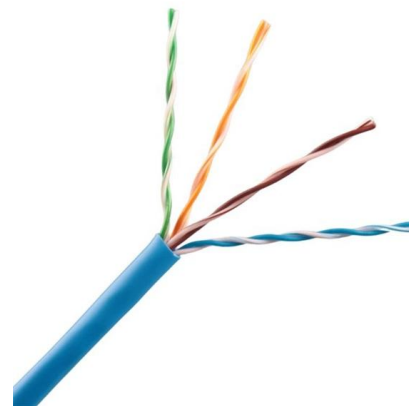


Optimising Loading Spans for Fibreglass Cable Tray

Loading spans refer to the maximum allowable distances between supports that ensure a cable tray or ladder remains stable under specified loads.

Best Practices for Installing Cables in Trays

Quick Installation Checklist (Key Steps) Cable tray cable installation generally follows these steps: Inspect cables before installation Prepare and



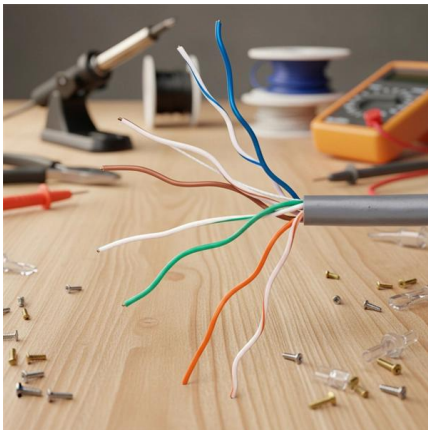
5 Steps to Learn How to Install Cable Trays

Installing a cable tray system requires careful planning to ensure it can support the weight of the cables and adheres to electrical safety codes. Here



Best Practices for Installing Cables in Trays

Learn the best practices for installing cables in trays. This guide covers essential steps, technical requirements, and key details



Cable Tray Technical Guide A practical guide to product selection and

Cable tray length is selected based on the load to be supported, the distance between the supports (also referred to as the span), and handling and installation constraints.

Polymer Cable Trays Types: Your Guide to Choosing Right

Explore different Polymer Cable Trays Types. We break down solid, hollow, and steel-lined options for your cable management needs. Find the best fit.



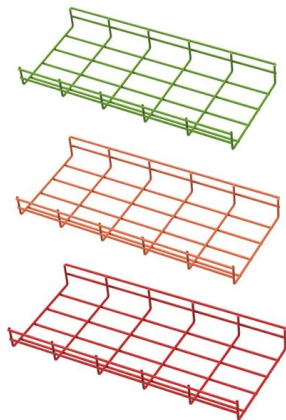
Cable Tray Installation

Whether you're building a commercial setup or upgrading an industrial plant, proper cable tray installation ensures neat wiring, safe access, and easy maintenance. But before you lay the first tray



Cable Tray Support Spacing: Key Guidelines Explained

Cable Installation: Lay the cables on the tray, distributing weight evenly. Cable Management: Use straps to secure cables, preventing movement

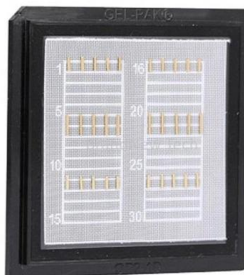


Cable Management Tray Installation

Looking to improve your cable organization and create a clean, safe workspace? In this video, we'll guide you through the step-by-step installation of a cable management tray, designed to keep

Cable Tray Fill Rules (NEC 392)

Cable tray types, NEC fill limits, single-conductor vs multiconductor differences, ampacity derating, and when to use cable tray vs conduit.



How Far Can Cable Tray Support Span?

Tray Type Different types of cable trays have varying load-bearing capacities. Solid-bottom trays, for example, can support more weight than ladder



How to Install Cable Tray: A Comprehensive Guide to Different Cable

Welcome to our step-by-step guide on installing cable trays! In this video, we'll explore the different types of cable trays available and provide detailed instructions for their installation.



Cable Tray Technical Guide A practical guide to product selection and

Cable Tray Technical Guide A practical guide to product selection and installation This guide for engineers and installers has been developed by ABB as a practical reference regarding cable tray



Mastering Cable Tray Installation , Step-by-Step Guide for a Seamless

Learn how to install cable trays correctly. Get the ultimate step-by-step guide on setting up a seamless and reliable cable management system.



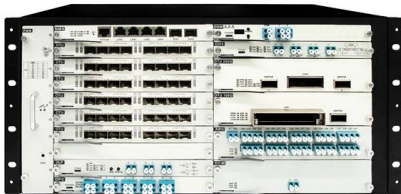
Best Practice Guide to Cable Ladder and Cable Tray Systems

This publication is intended as a practical guide for the proper and safe* installation of cable ladder systems, cable tray systems, channel support systems and associated supports.



A Guide to Installing and Supporting Electrical Cable Trays

A professional guide to installing electrical cable tray systems per NEC Article 392. Covers support, securing cables, and fill calculations.



Cable Tray Installation

Learn everything about cable tray installation with our complete guide. Discover types, steps, and safety tips for efficient electrical cable management.

Kaggle

```
]} ], "source": [ "!pip install gensim" ] }, {  
"cell_type": "code", "execution_count": 20, "id":  
"763ceb9d", "metadata": { "execution": {  
"iopub.execute_input":  
"2022-09-29T16:58:56.396234Z",
```



Cable Tray Systems , Solid, Perforated & Ladder Trays + Fittings , XMQJ

Cable Tray Systems for Industrial Cable Routing & Protection Discover reliable and efficient cable tray systems for industrial applications. From solid to perforated and ladder trays, we deliver a complete



Guide to cable support systems

The mesh cable trays are suitable for the installation of power cables and cables in various areas of application. The grid spacings mean that cables can be inserted and run out in various directions.



Contact Us

For datasheets, pricing, or custom high-speed optical interconnect solutions, please visit:
<https://www.syropy.com.pl>