

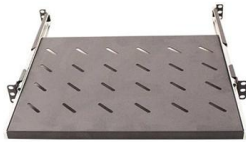
# **How to install a copper rod busbar**





## How to install a copper rod busbar

---



Webit Cabling

### Busbar Fabrication: Techniques for Efficient Assembly

How do you transform raw copper and aluminum into critical components for electrical systems? This article delves into the intricate processes

### Copper for Busbars - Guidance for Design and Installation

For busbar systems, the maximum working current is determined primarily by the maximum tolerable working temperature, which is, in turn,

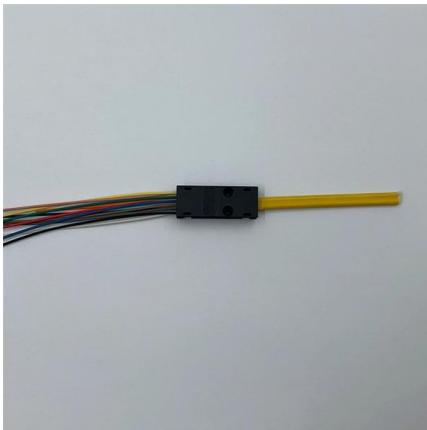


### Step-by-Step Busbar Installation Guide , Artizono

If you've ever wondered how to achieve a flawless busbar installation, you're in the right place. This guide will walk you through every step of the

### How to Properly Install Copper Bar Rods

Learn the steps of installing Copper Bar Rods quickly and properly, from cutting to joining, with this comprehensive guide for DIYers. Get a



## How to Design Busbar Systems for Substations

Learn how to design efficient substation busbar systems with calculations, examples, and best practices.

## Copper for Busbars

It is usually necessary to joint busbars on site during installation and this is most easily accomplished by bolting bars together or by welding. For long and reliable service, joints need to be carefully made



- ✓ Slow Axis Aligned (0°) - for standard sensing applications
- ✓ Fast Axis Aligned (90°) - for special modulation applications
- ✓ 45° Axis Aligned - for depolarizer applications



## Busbar 101

With busbar power, there is less bending, drilling, and tapping copper in preparation for deployment, and panels utilizing busbar can be mounted and installed in a fraction of the time compared to block-and



## How to Install Bus Bars in Electrical Panels: A Step-by-Step Guide

Proper installation is essential to ensure optimal performance and compliance with electrical codes. In this comprehensive guide, we'll walk you through the process of installing bus bars in electrical



### Design Guide for bus bars

Conductors Conductor material selection is critical in meeting electrical performance and mechanical rigidity requirements. Common materials used are copper,

## How to Install Bus Bars in Electrical Panels: A Step-by-Step Guide

By following the step-by-step guide outlined above, you can confidently install bus bars while complying with electrical standards. Bus bars in electrical systems offer numerous benefits, from improved



AOC  
QSFP28 to 4\*SFP28  
100G  
OM3/OM4



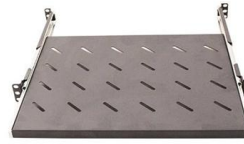
### Busbar Processing & Installation: Your Ultimate Guide

Your ultimate guide to busbar processing and installation is here. From beginner to expert, we cover everything you need to know in this



## Copper Busbars: Design & Installation Guidance

Comprehensive guide on copper busbar design, installation, current capacity, lifecycle costing, and short-circuit protection. Ideal for electrical engineers.



Webit Cabling



### How to install copper busbar?

Copper busbars are now widely used in power plants and substations, etc., and need to be careful when using, and patiently check whether the above items meet the standards to ensure your life safety.

### Flexible Busbars , nVent ERIFLEX

Flexible Busbars Gain design and assembly flexibility in electrical panels nVent ERIFLEX Flexibar cross sections are formed from multiple layers of thin electrolytic copper insulated with a high-resistance,



### A Guide to Electrical Busbars: Common Uses & Design

Get answers for advantages and common uses for electric busbars, types of busbars, and how simulation tools complement the design process.



### How to install copper busbar?

After the tubular bus is in place, check that all accessories are in good condition, installation position is correct, and elastic pins are open. Each tubular bus shall be fixed at the intermediate point and shall

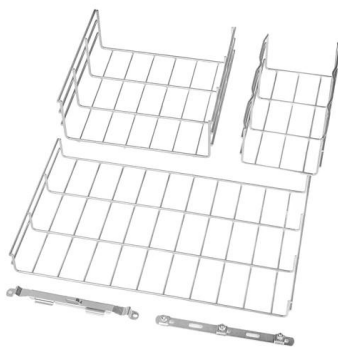


### Busbar Trunking Systems: Installation Tips and Best Practices

This guide covers step-by-step installation tips, common mistakes to avoid, and safety considerations, ensuring your project benefits from a professional busbar trunking system installation service.

### Copper Busbar: The Ultimate Guide to Applications,

Introduction In the world of electrical engineering and power distribution, copper busbars play a crucial role. These conductive bars, widely



### How to Install and Process Busbars in Electrical Panels

To install busbars in electrical panels, begin by turning off the power to ensure safety. Select the appropriate busbar material, typically copper or aluminum, based on your current



## What is a Busbar? A Detailed Guide

A busbar is a metallic strip or bar used in electrical power distribution, installed inside switchgear, circuit boards, and busway boxes to directly distribute



## How to install a copper busbar in the distribution board.

hi friends welcome to my channel, In this video I want to show you how to install a copper busbar on the distribution board which will be the size of a busbar, insulator

## Understanding Electrical Ground Bus Bar: An Ultimate

Explore everything you need to know about the electrical ground bus bar, a critical component for safe and efficient electrical systems.



## Copper for Busbars

Busbars are generally made from either copper or aluminium. For a complete list of mechanical properties and compositions of copper used for busbars, see BS EN 13601: 2013 Copper rod, bar

## How to install a copper busbar in the



## distribution board.

How to install a copper busbar in the distribution board. Daily work experience 30.1K subscribers  
Subscribe



## Bus Bars , Ground Bus Bar Connectors, Electrical Bus Bars , RS

Bus Bars Where electric power distribution is needed, you'll find busbars. Whether you're searching for aluminum busbars, copper busbars or insulated busbars, you'll find them all and more at RS, in stock

## Contact Us

---

For datasheets, pricing, or custom high-speed optical interconnect solutions, please visit:  
<https://www.syropy.com.pl>