

# **How to identify the multiplier in a primary distribution box**





## Overview

---

Radial operation is the most widespread and most economic design of both MV and LV networks. It provides a sufficiently high degree of reliability and service continuity for most customers.



## How to identify the multiplier in a primary distribution box

---



### Understanding Distribution Boxes: A Comprehensive Guide

A distribution box, also known as a power distribution box or electrical distribution box, is used to distribute electrical power safely to multiple

### Distribution Boxes Types - The Complete Guide

The power distribution boxes deliver electricity from the main electrical main to other circuits. Several distribution boxes are designed for specific use in

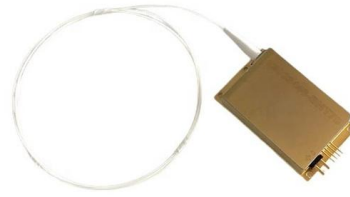


### Where Is the Distribution Box Located and How to Find It

Learn where distribution boxes are typically located in homes and get step-by-step instructions for finding your electrical panel. Includes safety tips and

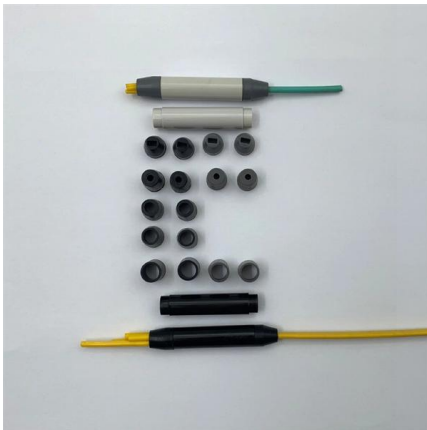
### What is an Electrical Distribution Box? A

Discover everything you need to know about electrical distribution box! Learn about types, components, and how to choose.



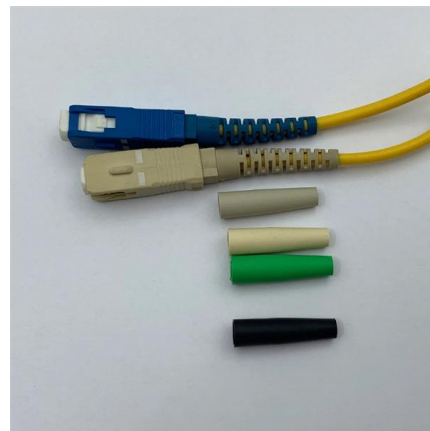
### What Is a Distribution Box?

What to Look for When Choosing a Distribution Box If you're going to buy a distribution box, there are several things you should look for. You should



### What Is an Electrical Distribution Box? A Complete Guide

An electrical distribution box routes power, prevents overloads, and keeps wiring organised--essential for safe, efficient home and



### Power Distribution Boxes Explained Simply

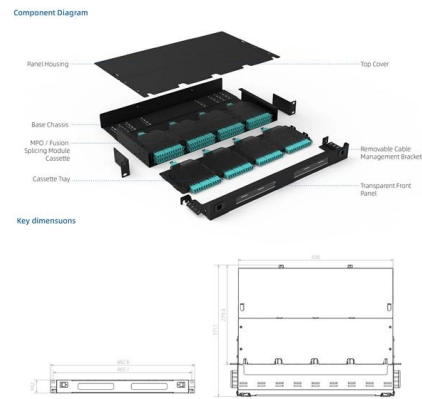
Learn what a power distribution box is, how it works, key components, types, and why it's vital for safe and efficient electrical systems.





## Explore Power Distribution Box Types and Functions

Power distribution boxes are used in commercial and residential buildings and are part of the electrical system, also known as switchboards.



## The Meaning and Function of Primary, Secondary, and Tertiary

This explanation aims to clarify the roles and functions of primary, secondary, and tertiary distribution boxes, enhancing the understanding of these critical components in electrical distribution

## Primary and secondary power distribution systems

Primary distribution systems Primary distribution systems consist of feeders that deliver power from distribution substations to distribution



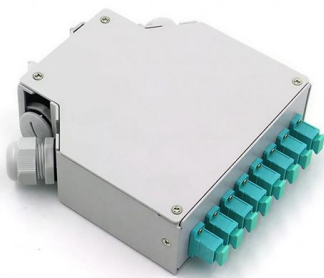
## The difference between the first, second, and third levels of

What do the primary, secondary, and tertiary boxes of a distribution box mean? This is a relative issue. Let's make a hypothesis: a newly built residential area introduces a 10kV incoming line



## The Complete Guide to Distribution Box: Installation, Types & More

The primary purpose of a distribution box is to provide a safe and organized way to control electrical circuits. When an electrical fault occurs, such as an overload or short circuit, the protective



### Power Distribution Box Essentials: Functions, Types

Every distribution box is specially equipped to handle unique tasks, power clean-up and in an efficient manner in a wide range of settings. 5)

### How to understand the multiplier

Transformer ratios are then used to determine the external multiplier. Therefore, on many demand meters, the metering system multiplier to be used on the



### The Ultimate Guide to Distribution Box Types

Discover the key types of distribution boxes with NUOMAK's comprehensive guide. Learn about Main Distribution Boards (MDB), Consumer Units, Transfer



## How To Read The Distribution Box System Diagram

?Identify the dual power switch? (if any):  
Understand the working principle and switching conditions of the dual power switch to ensure that it can

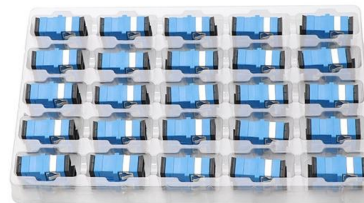


## Distribution Boxes: Types and Functions

Use the table below to quickly identify which distribution box type best matches your application: This type of distribution box is typically used

## How to Read and Interpret Your Distribution Box Labels

Understand your distribution box labels to identify circuits, improve safety, and troubleshoot electrical issues in your home with confidence.



## How to understand the multiplier

The amount of electricity you use is determined by multiplying the difference between the present and previous meter reading by the multiplier showing on your electric



### primary distribution system

These are tapped from the primary feeder main, as shown in the simplified distribution feeder diagram of below Figure. A typical power distribution feeder



### The basics of primary distribution circuits (substation)

The normally closed switch on the primary-side transfer switch opens after sensing a loss of voltage. It normally has a time delay on the order of

### A Definitive Guide To Distribution Boxes

The distribution box acts as the center of power distribution, distributing electricity to all connected devices. A distribution box, also known as a distribution board, panel board, breaker



### CALCULATION OF MULTIPLIER

eplate of your meter. If no multiplier is written, there is no multiplier for your meter, which mean what you read on the mete.



## Understanding Distribution Boxes: Your Guide to Power

Weatherproof Distribution Boxes These serve specific outdoor purposes, with rain, dust, and extreme temperatures sealed shut, protecting any

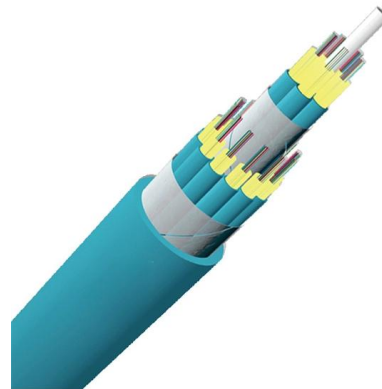


## System Arrangements

Several commonly used system topologies are presented here, along with the pros and cons of each. The figures for each of these assume that the distribution and utilization voltage are the same, and

## Distribution Automation Handbook

In primary distribution substations, the main protective device for the installed equipment against overvoltages is the zinc oxide cap-less surge arresters. The selection of suitable surge arrester



## Contact Us

---

For datasheets, pricing, or custom high-speed optical interconnect solutions, please visit:  
<https://www.syropy.com.pl>