

How to distribute electricity in a high-voltage distribution box





How to distribute electricity in a high-voltage distribution box

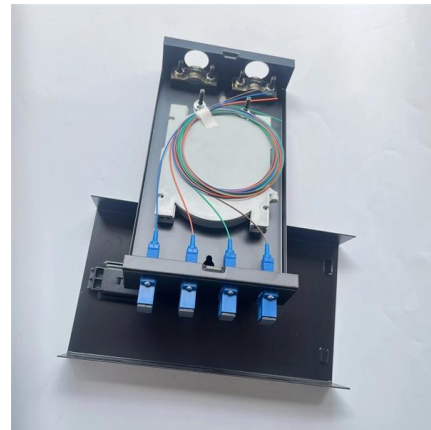


Electric Power Distribution System Basics

It receives power from a transmission network. The high voltage from the transmission line is then stepped down by a step-down transformer to the primary

What Is a Distribution Box?

In Conclusion Most residential and commercial electrical systems have at least one distribution box. A distribution box is a device that, as the name



How It Works: Electric Transmission & Distribution and Protective

How It Works: Electric Transmission & Distribution and Protective Measures The electricity supply chain consists of three primary segments: generation, where electricity is produced; transmission, which

How to distribute electric energy in high and low voltage

Generally, high-voltage switchgear is used in power supply bureaus and substations, and then led to the low-voltage distribution cabinet through the step-down low

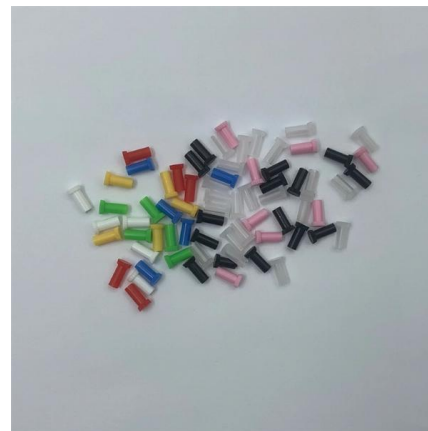


What Is an Electrical Distribution Box? A Complete Guide

An electrical distribution box is a centralized unit responsible for distributing electrical power across multiple circuits within various

From DGX to DSX -- NVIDIA's Secret Weapon Is \$IREN DGX was

This long-term expertise in managing massive electrical and thermal loads is, in reality, an extremely competitive advantage within the industry. From the analysis above, one can



High voltage power distribution units

Power distribution in electric vehicles presents significant challenges in design, particularly concerning safety and reliability, due to the high electrical currents. To



High Voltage PDU

High-voltage Power Distribution Units (HV PDU) enable the electrification of construction machinery as well as commercial and municipal vehicles. In other

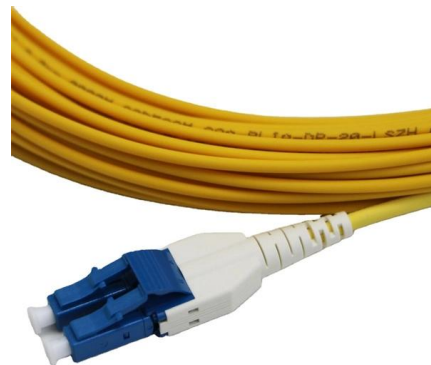


SECTION 9: ELECTRICAL POWER DISTRIBUTION

Utilities may have some control over and access to the energy stored in electric vehicles attached to the grid.

Electric power distribution

From the transformer, power goes to the busbar that can split the distribution power off in multiple directions. The bus distributes power to distribution lines, which fan



What is an Electrical Distribution Box? A

Industrial: In industrial environments, distribution boxes take on an even more significant role, dealing with high voltage and substantial electrical



Power Distribution Boxes Explained Simply

Learn what a power distribution box is, how it works, key components, types, and why it's vital for safe and efficient electrical systems.



What Is High Voltage Power Distribution

High-voltage power distribution is crucial in efficient and cost-effective electricity transmission over long distances. In this article, we will delve into the

High Voltage Distribution Box

High voltage distribution box is the control part of EV power supply, which has the functions of power distribution, current measurement, short circuit protection,



Detailed Comparison Between LV & HV Distribution

In modern power systems, distribution rooms are crucial for efficient and safe electricity supply. These rooms are generally divided into low voltage distribution



How Does a Power Distribution Box Work

Learn how a power distribution box works step by step--from incoming power to circuit protection and smart monitoring--for safe, efficient electricity delivery.



How does a power distribution box work

The distribution box is a very important component of the power system. It is responsible for transmitting electrical energy from the power station



The Power Distribution Grid

The power goes from the transformer to the distribution bus. The bus distributes power to local distribution lines. The bus has its own transformers that can also



Distribution Boards: Types, Components & Applications

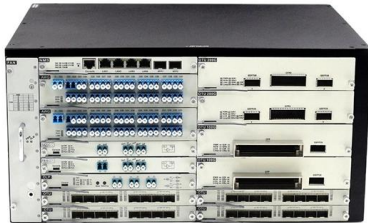
A distribution board or a distribution box that contains electrical components and distributes power from the main supply to individual circuits. It is





How to Choose a House Distribution Box , CHINT global

A well-chosen distribution box ensures the safety and efficiency of your household electrical system. This article guides you through selecting a



A Complete Guide to LV Distribution Board

LV distribution boards, part of the electrical distribution system, securely distribute low-voltage power to facility circuits.

DB BOX (Electrical Distribution Box): Everything You

From low-voltage to high-voltage systems, and from indoor to outdoor installations, there is a suitable DB Box for every situation. At QINJIA Electric, we



How It Works: Electric Transmission & Distribution and Protective

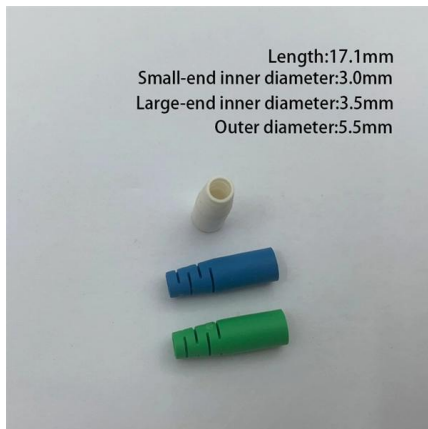
Distribution systems, typically rated below 34 kV, can tie directly into high-voltage transmission networks or be fed by sub-transmission networks via "step down" substations.





How Electric Power Distribution Works

Discover the essential steps and engineering needed to transform high-voltage power into safe, reliable electricity for homes and businesses.



What is the Function of a Distribution Box in Electrical Systems

Understand the function of the distribution box in electrical systems and how it ensures safe and efficient power distribution.

High Voltage Power Distribution Networks: Design and Operation

High voltage power distribution networks are critical to ensuring the reliability of electric power delivery to both residential and industrial users. However, they face several operational challenges that can



STAINLESS STEEL WIRE MESH

- Long-lasting and durable
- Comprehensive specifications
- Customized non-standard products



Power Distribution Systems

The process begins at distribution substations, where high-voltage electricity transmitted over large distances from power plants. These substations are carefully situated near demand centers to



Contact Us

For datasheets, pricing, or custom high-speed optical interconnect solutions, please visit:

<https://www.syropy.com.pl>