

# **How to distinguish left from right in fiber optic patch cords**





## Overview

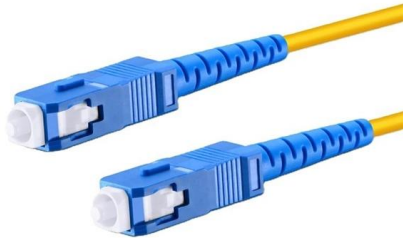
---

When looking at the fiber end-face, fiber positions are numbered from left to right starting with P1. The P1 position is also commonly marked with a white dot on the side of the connector housing. TIA-568-C (Commercial Building Telecommunications Cabling Standard) defines the A-B polarity scenario for discrete duplex patch cords, with the premise that transmit (Tx) should always go to receive (Rx) — or "B" should always connect to "A" — no matter how many segments there are. Because fiber duplex links rely on matched transmit-receive alignment, polarity determines how cables, connectors. One of the most common faults when a newly-installed fiber network does not work is the fibers are not. Fiber polarity is the direction that light signals travel from one end of a fiber optic cable (link) to the other.



## How to distinguish left from right in fiber optic patch cords

---

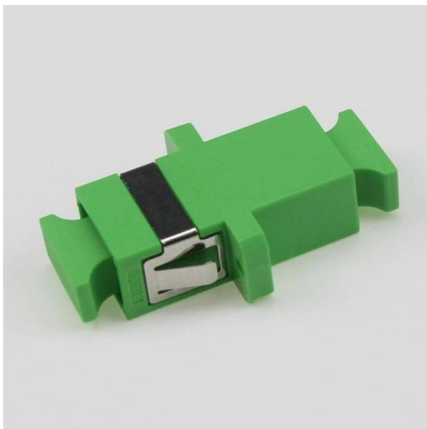


### Fiber Optic Cable Types Explained: Choosing the Right

Fiber Optic Patch Cable Types and How to Choose the Right One? Fiber optic cables come in various types based on different specifications and

### such/ignore.txt at main · yeerma/such · GitHub

aasdadasada. Contribute to yeerma/such development by creating an account on GitHub.



### Fiber Optic Patch Cords Guide , Types, Connectors

This guide will help you quickly understand the main types of fiber patch cords and how to choose the right solution for your project - and how ZION

### What are the types and differences between fiber optic

(4) Patch cord material: fiber optic patch cords can be divided into ordinary type, ordinary flame retardant type, low smoke halogen-free type, low



### What Are Fiber Patch Cord Types and How to Choose?

Conclusion Fiber patch cord has helped many people to achieve larger bandwidths and greater speeds, and the benefit of which is stretching across a



### Understanding Common Fiber Optic Patch Cord

When it comes to building or upgrading a fiber optic network, choosing the right patch cords is crucial for long-term performance and reliability. Let's



### Fiber Optic Patch Cord:A Beginner's Guide

Fiber optic patch cord is a length of optical cable that connects FTTH devices. It equips with fiber connectors such as LC, SC, FC, ST, E2000 etc.,

### How to Use fiber Optic Patch Cords



### Correctly?

Fiber patch cords are used to make patch cords from equipment to fiber optic cabling links. There is a thicker protective layer, which is generally used for the

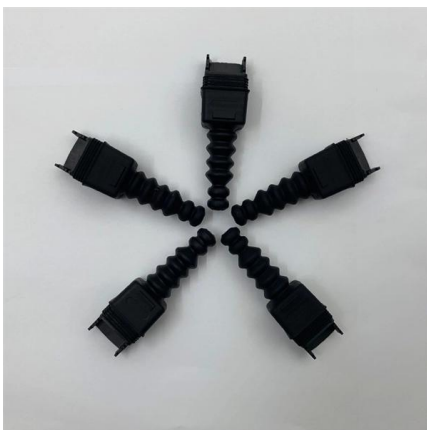


### Polarity Basics

The fiber holes in the body of the connector are numbered in order (from left to right). Each of the connectors is marked with a white dot in order to designate the

### Fiber Polarity: Everything you Need to Know

When looking at the fiber end-face, fiber positions are numbered from left to right starting with P1. The P1 position is also commonly marked with a



### Understanding Fiber Patch Cord Types

The right fiber patch cord not only ensures optimal performance but also minimizes signal loss, reduces downtime, and supports future scalability. In this comprehensive guide, we will explore different fiber

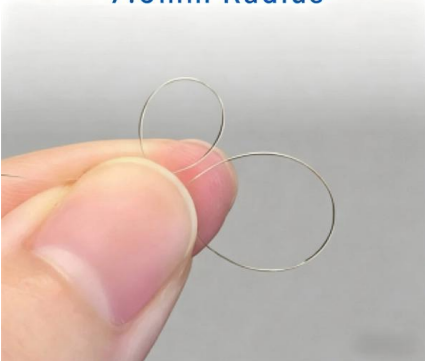


## Fiber Polarity: Everything you Need to Know

The Method A configuration translates to the fiber in P1 (Tx), on the left, arriving at P1 (Tx) on the right at the other end. Because Method A does not



7.5mm Radius



## Fiber Polarity Technical White Paper , FS

2. Polarity Overview Two types of fiber links are outlined in the TIA standard: serial duplex signals connections and parallel signals connections. This paper discusses the impact of polarity as it

## Understanding Fiber Patch Cord Types

In this comprehensive guide, we will explore different fiber patch cord types, their features, applications, and how to choose the right one for your project.



## The FOA Reference For Fiber Optics

Thus, when connecting patchcords, fiber 1 (or the odd numbered fibers) can always go to the transmitter and fiber 2 (or all even numbered fibers) goes to a receiver



## Understanding Fiber Jumper Cables: A Comprehensive

What is a Fiber Jumper Cable? Fiber jumper cables, called fiber patch cords, are also short optical fibers equipped with connectors at both ends.



### Fiber Optic Polarity 101: A-B Polarity

A duplex patch cord with A-B polarity carries a "straight-through" position, as seen in the example below. When facing an open port in the "Keyup" position, "B" will

### A Breakdown of Fiber Optic Patch Connectors and Their

A comprehensive guide to fiber optic connectors including FC, SC, LC, ST, and MPO/MTP types.



### SOPTO

Fiber optic patch cords, also known as fiber optic patch cables or fiber jumpers, are indispensable components in modern optical networks. They act as the critical link for



## A Comprehensive Guide to Optical Patch Cords Types

Optical patch cords, also known as fiber optic jumpers, are indispensable in linking optical devices and ensuring efficient data transmission.



## A Comprehensive Guide to Fiber Optic Patch Cables

Fiber optic patch cables are found almost everywhere; cable television networks (CATV), data centers, computer networks, and telephone networks. Fiber optic

## The Comprehensive Guide to Fiber Optic Patch Cables

Discover how fiber optic patch cables are integral to the seamless operation of modern networks, offering significant advantages.



## The FOA Reference For Fiber Optics

Since most fiber optic links use two fibers transmitting in opposite directions to create a full duplex link, you need to ensure that transmitters are connected to receivers



## Understanding Patch Cord Polarity in Fiber Networks

A technical explanation of patch cord polarity, including signal direction, connector orientation, and mapping methods for data center and FTTH



## Common Types of Fiber Patch Cords and How to Choose the Right

Introduction Thanks to the fiber optic technology, we are running at a faster speed and are connected through advanced technology. Seamless and quick communication among users is

## Fiber Polarity Basics for Duplex Applications

Fiber polarity is the direction that light signals travel from one end of a fiber optic cable (link) to the other. A link's transmit signal (Tx) must match its corresponding receiver (Rx) at the other



## Fiber Polarity Basics for Duplex Applications

Proper duplex polarity, where the transmit signal matches its corresponding receiver, is essential for fiber links to function. Learn more in this guide.

## Fiber Patch Cables Explained 2025: Types,



## Connectors,

Introduction: why fiber patch cables matter? In a modern data center, every high-speed optical link depends on the right fiber patch cable. These short



## Contact Us

---

For datasheets, pricing, or custom high-speed optical interconnect solutions, please visit:  
<https://www.syropy.com.pl>