

How to determine the amperage of a switch in a distribution box





How to determine the amperage of a switch in a distribution box



Network Cabinet & Rack

How to Determine Amperage of Circuit Breaker

Each circuit breaker has a specific rated amperage, or amount of current. When that amperage is exceeded, the circuit breaker shuts down the

How To Tell Amperage Of A Breaker Box: Panel Assessment Guide

A: You can find the amperage rating of your breaker box by examining the main circuit breaker; it is usually labeled with its amperage on the switch. Additionally, check for a sticker or plate



How to Tell the Amps on an Electrical Panel

Amperage, often shortened to amps, measures the volume of electrical current flowing through a home's wiring and equipment. Understanding the amperage rating of your electrical panel

How to Inspect the Main Electrical Disconnect, Fuse, or Breaker to

Electrical Service Main Disconnect or Main Breaker: This article explains how to estimate the electrical service size, (or "electrical power" or "service amps") at a building by visual



examination of the main



Wire Size Calculator , Professional NEC Compliant Tool

Our professional wire size calculator follows NEC standards to determine the minimum safe wire gauge for your electrical installation. Here's how to use it effectively:



How to Tell What Amp Service Is in Your House

Your home's amp service determines how many appliances you can run at once, with checking the main breaker's amperage revealing this number



The 3 Best Ways to Determine Amperage of Circuit Breaker

Circuit breakers are essential safety devices that protect your electrical system from overloads and short circuits. Determining the correct amperage for your circuit breaker is crucial for ensuring the safety





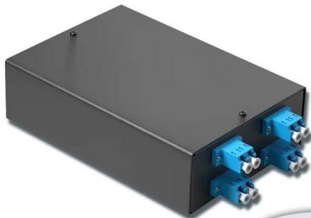
How To Check Amps On A Circuit Breaker: A Step-by-Step Guide

This guide will walk you through how to check amps on a circuit breaker, from identifying breaker amperage to checking circuit breaker capacity. Why Checking Circuit Breaker Amperage



4-port 8-core LC wall-mounted fiber terminal box (empty frame)

Surface painted Scientific plate fiber Cold-rolled steel plate



Lifetime quality assurance

Free shipping

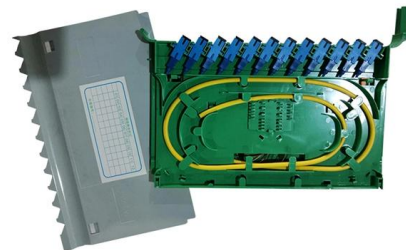
Customizable for telecommunication

How to Determine the Amperage of an Electrical Panel

Look for text that explicitly states "Max Amps" or "Maximum Service Current," followed by a number like 100A or 200A. This rating confirms the maximum current the panel's internal bus bars

How to Check Amperage on Circuit Breaker Safely

How to Identify Your Circuit Breaker's Amperage Rating To determine the amperage rating of your circuit breaker, first examine the breaker switch.



How many amps does a modern household need?

Often, older panels don't supply the right amperage to keep a modern household running. In addition, there are other factors to take into consideration



How To Determine Amps On Circuit Breaker

To safely and accurately determine the amps on a circuit breaker, there are two components you'll need: an amp meter and a set of test leads. An

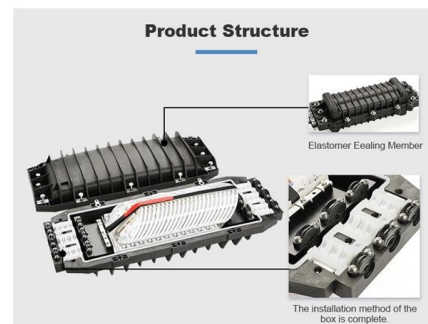


How to Determine the Amperage of Home Wiring

If you're about to buy a house, most lenders want to know what amperage the wiring is. Read this post and find how to determine the amperage.

Determine Ampacity & Voltage at a Buildings

How to determine building electrical service amps (ampacity) and volts (voltage): This article series explains how to estimate the electrical service size, (or "electrical power" or "service amps") at a



How to Size Main Panel, Load Center, and Consumer

In today's step-by-step guide, we will demonstrate how to select the right size panelboard (whether it's a load center, distribution board, or circuit breaker panel)



How to Size Main Panel, Load Center, and Consumer

Sizing Main Panel, Load Center, Panelboards, Distribution Board & Consumer Unit According to NEC and IEC? How to Determine the Right Size of Breaker Box?



How to Find Out How Many Amps Your Breaker Box Is

Unlock your home's total electrical capacity. Find out your breaker box amp rating for safety, load calculation, and future renovation planning.

Power, Voltage and Current Rating of Outlet, Switch & Plug

How to Find the Voltage, Power and Ampere Ratings of Outlet, Switch, Receptacle, Socket and Plugs etc.? Switches, outlets, plugs, receptacles,



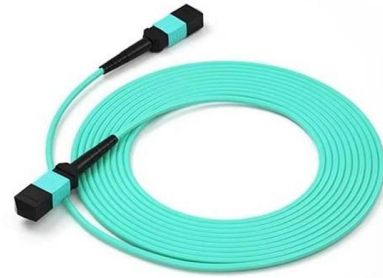
How to Determine the Amperage of an Electrical Panel

An electrical panel, often called a breaker box or load center, serves as the primary distribution point for all the power entering a home. The single most important specification of this



Assessing Electrical Service Capacity

There are many solutions on the market today that enable switching to electrical heating systems and installing EV charging stations without overloading the electrical capacity of a building.

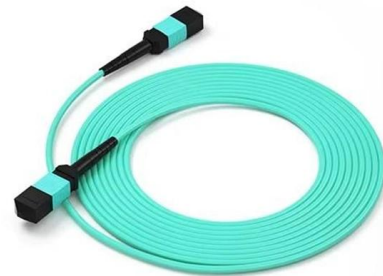


How to Calculate Your Home's Electrical Load

You don't need to be an electrician to know how to calculate total amps in a breaker panel. Understand your home's electrical load with these tips.

Electric Panel Amps Rating

How to determine the residential electrical service panel age, type, and size or capacity in Amps & Voltage: This article explains how to estimate the electrical service size, ampacity rating, (or



switches

I've tried googling things like "understanding electrical ratings", "understanding wattage and current ratings", "how do I know if a switch can



Contact Us

For datasheets, pricing, or custom high-speed optical interconnect solutions, please visit:

<https://www.syropy.com.pl>