

# **How to determine if it is a core switch**





## Overview

---

A core switch is the backbone of a network, managing high-speed data traffic between multiple segments. It's designed to handle significant amounts of traffic with advanced features like redundancy and scalability. The core switch is usually your most powerful switch and depending on the design its the one with routing on it and connected to your firewall, there is no command which will tell you what the core switch is, it will be based on the topology and design of the network, are the switches all layer. As the core backbone layer of the entire network architecture, the core layer bears the traffic transmission of the entire network, so the core layer has high requirements for core switches and must be carefully considered when selecting them.



## How to determine if it is a core switch

---

### How to Choose the Right Core Switch for Enterprise

Learn how core switches for enterprise networks and LAN campus networks function in the hierarchical internetworking model and how to choose



### Core Switch vs. Distribution Switch vs. Access Switch

Comprehensive guide to Core, Distribution, and Access Switches. Roles in the network and important parameters explained.



### Core Switch vs Normal Switch: Key Differences Explained

While both core and normal switches play crucial roles in maintaining efficient data flow, their functionality and applications vary significantly. This guide



### Identify core switch on my network

Hopefully we can clear this confusion up. Are you referring to the core switch in terms of STP? If so, the root switch is based on an election held by all the switches. Once chosen, the



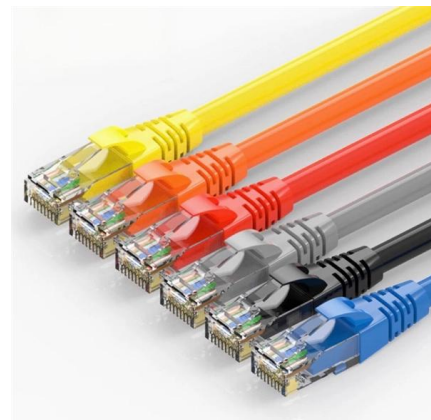
### **NFL Athletes and Top CEOs Meet for Exclusive**

Entrepreneur Media and Athletes First are bringing together the biggest names in business and sports for a three-day summit in Utah.



### **Core Switch vs Normal Switch: Key Differences Explained**

What Are Core and Normal Switches? Core Switch A core switch is the backbone of a network, managing high-speed data traffic between multiple



### **What is a Core Switch?**

What is a Core Switch? A Deep Dive A core switch is the backbone of a network, providing high-speed switching for data packets between different network segments; essentially, it's

### **What Is a Core Switch in a Network?**



Define the core switch--the central, high-speed backbone required for aggregating and routing massive volumes of enterprise network traffic.



### How to find core switch

Hi, Can anyone help me to find out that connected switch is core switch. Is there any command or trick to find it. There are 7 switches connected but unable to find which is core one .

### What is Core Switch and How to Choose?

This article will explore the core switches and provide valuable insights on how to choose the ideal core switch for your network needs. Join us on this journey to understand what a core layer switch really



### What is a Core Switch , Functions and Difference over Normal Switch

What is a core switch and how it works? This article builds the basics of this kind of switch for the ones who don't know anything about it. What is a Core Switch? It is a powerful



### What Is the Core Switch?

The core switch is the central, high-capacity switching point within a network, responsible for forwarding data between different parts of the network and often connecting to multiple



#### REINFORCED VIRGIN PVC TRUNKING

Superior Crush Resistance



	<b>37.6MPA</b> Tensile Strength		<b>2856MPA</b> Elastic Modulus
	<b>9.8KJ/M<sup>2</sup></b> Impact Strength		<b>1.54G/CM</b> Density

### WORLD WIDE WEB JOURNAL Home

will open to start the export process. The process may take but once it finishes a file will be downloadable from your browser. You may continue to browse the DL while the export process is in

### How to find core switch

It will show you what switches are connected on each port. Most of the time your core will be the one where either all the switches are connected to or most of them at least.



### Understanding the Core Switch: Key Differences and Uses

The significance of the core switch in building and sustaining a resilient network infrastructure is paramount. As the central data traffic hub core

### What Is a Core Switch in Networking?



**What Is a Core Switch in Networking?**  
Understanding the Backbone of Your Network A core switch in networking serves as the high-capacity



### **What is a Core Switch , Functions and Difference over Normal Switch**

The major difference between core switches and ordinary (aggregation) switches is their network performance. Core switches as expected are designed to be quicker than aggregation

### **Understanding the Core Switch: Key Differences and Uses**

Explore the core switch's role as the backbone of your network. Discover key differences, uses, and insights into layer 3 core switch technology.



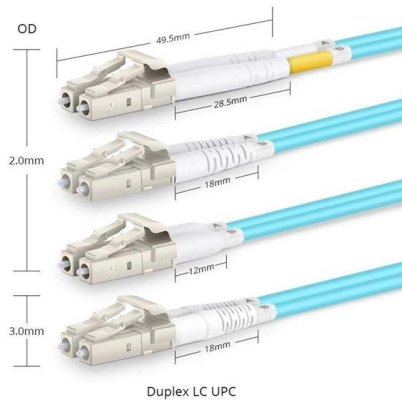
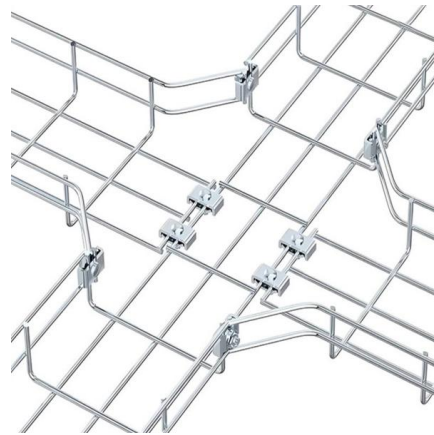
### **Differences Between the Core Switch and Normal**

A core switch is not a type of switch, but a switch placed at the core layer (the backbone of the network). Generally, large-scale enterprise networks



## How to Choose a Core Layer Switch?

Generally speaking, core switches are Layer 3 switches, which can support various network protocols such as routing protocol/ACL/load balancing and have rich functions. The following factors can be



## Understanding Core Switch: What It Is and How to

Factors to Consider When Choosing a Core Switch. When selecting a core switch, it's essential to focus on several crucial aspects that can significantly

## What Is Core Switch?

A core switch is the high-capacity networking switch that forms the backbone of a network, directing data traffic between different network segments and ensuring efficient



## FS Community

Hier sollte eine Beschreibung angezeigt werden, diese Seite lässt dies jedoch nicht zu.



### What Is a Core Switch?

Explore what a core switch does, why it's essential for enterprise networks, and how to choose the right model. Includes real-world applications and Cisco/Huawei/Aruba model comparison.

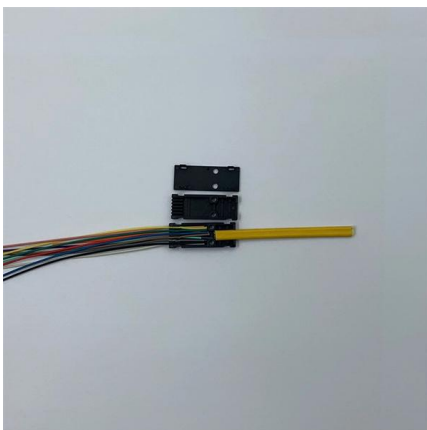


### What Is a Core Switch?

A core switch is the backbone of a large-scale network, designed to handle massive volumes of traffic with ultra-low latency and maximum reliability. Sitting at the top of the hierarchical model, core

### What Is a Core Switch in Networking?

Unlike access switches, which connect directly to end-user devices, the core switch focuses on aggregating and routing traffic between other



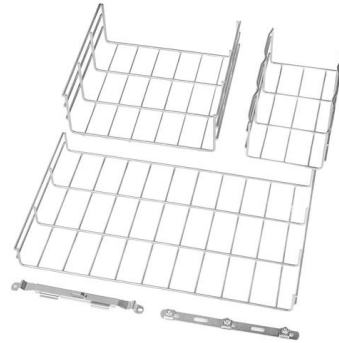
### Core Switches: The Pillar of Network Infrastructure

Core switches, as the name suggests, form the core or central part of a network, connecting several other switches in a network infrastructure. These



## Understanding Core Switch: What It Is and How to

A core switch is not merely a type of switch but rather denotes the switch that operates at the core layer (the network's backbone). Positioned at the



### What Is a Core Switch? Network Backbone Architecture Guide

Discover what a core switch does in a 3-tier network model. Learn about ASIC routing, collapsed core vs dedicated core topologies, and SMB sizing guides.

## Contact Us

---

For datasheets, pricing, or custom high-speed optical interconnect solutions, please visit:  
<https://www.syropy.com.pl>