

# How to connect the power supply of a spectrometer analyzer





## Overview

---

For Go Direct spectrophotometers, do not connect the power supply, it is not needed when connecting via USB. These measurements could be done manually but automating them increases efficiency and accuracy. Instead of showing signal changes over time, as an oscilloscope does, a spectrum analyzer plots signal amplitude (vertical axis) against frequency (horizontal axis). All single-phase auxiliary wall outlets must use the same ground as the power line of the instrument. If you are measuring a current that does not exceed the maximum rated input current of the power analyzer you are working with, you can connect the current carrying cable directly to the current inputs of the power analyzer. Spectral Analysis is our free application to collect, graph, and analyze spectroscopy data from spectrometers.



## How to connect the power supply of a spectrometer analyzer

---



### Portable Metal Analyzer

The SPECTROPORT portable arc spark spectrometer is ideal for many applications in the metal producing, processing, and recycling industries. Find out more.

### zxcvbn-rs/src/frequency\_lists.rs at master

Port of Dropbox's zxcvbn password strength library for Rust - shssochiro/zxcvbn-rs

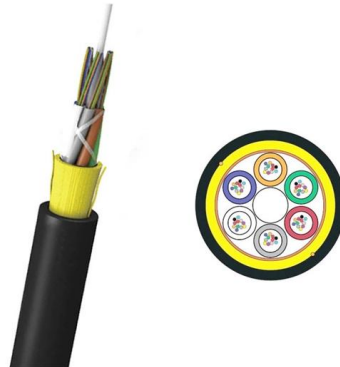


### Spectrum Analyzer

Connect to AC Power Supply AC power supply. Please use the power cord provided as accessories to connect the instrument to the power source as shown in interface, other Details of the Various

### Power outlets in laboratories

Installing a complete LC/MS system can require extensive electrical resources. Plan your power system so that it includes numerous outlets to ensure that you can connect and power all of your equipment.



### **Connect the mass spectrometer and the modules to wall outlets**

Both power connectors of the mass spectrometer must be connected to the power supply in the laboratory to operate the instrument. To prevent overloading the circuit, do not connect the mass



### **Using Spectrometers with Computers - Technical Information Library**

Connect the AC Power Supply to the spectrophotometer. This supplies power to the lamp (unnecessary for emissions experiments). Turn the power switch to the ON position. Wait for the lamp indicator



### **Go Direct Visible Spectrophotometer Troubleshooting and FAQs**

If connecting via USB: Connect the spectrophotometer directly to the USB port. If connecting via bluetooth: Connect the spectrometer to the USB power adapter or to a powered USB



## AQ6370D Optical Spectrum Analyzer User's Manual

There are three types of advanced markers: moving marker, power spectral density marker, and integrated power marker. Advanced markers can be placed on any of the waveforms from trace A to G.



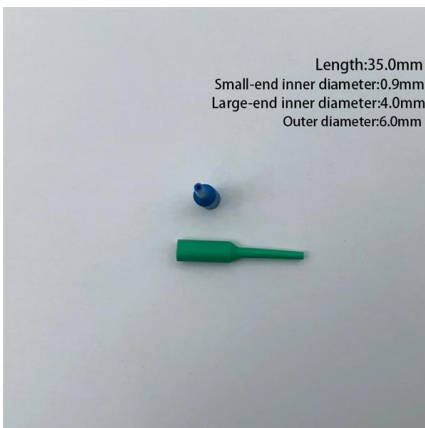
## Mobile Spectrometer for Metal Analysis

Arrest the instrument using the roller brakes. Connect the argon supply hose to the connector jack on the back side of the instrument (no argon is required for arc discharge). Ensure to latch the quick



## Vitrek Power Analyzer Guide for Power Quality Testing

Step-by-step guide to using Vitrek power analyzers for accurate power quality testing, harmonic analysis, efficiency monitoring, and standards compliance.



## Training for Power BI , Microsoft Learn

Microsoft Power BI is a collection of software services, apps, and connectors that work together to turn your unrelated sources of data into coherent, visually



## Spectrum Analyzer

Use Proper AC Power Line Only the power cord designed for the instrument and authorized by local country should be used.

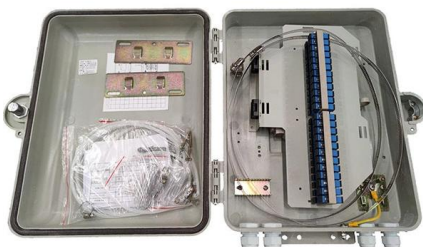


## Connecting a Spectrometer to a Microscope

Seamlessly connect a spectrometer to a microscope for micro-spectroscopy studies, enabling detailed spectral analysis of a range of microscopic samples.

## Crackhead/pass.txt at master · moimikey/Crackhead ·

How to create a web form cracker in under 15 minutes. - moimikey/Crackhead



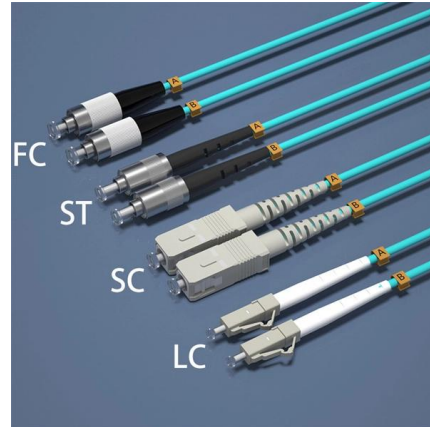
## How to Measure RF Power Using a Spectrum Analyzer

Preparing the Spectrum Analyzer Power on the spectrum analyzer and allow it to warm up for a few minutes. Connect the input cable to the analyzer's input signal



### How To Use A Spectrum Analyzer: Step-by-Step Guide

Discover how to expertly use a spectrum analyzer to capture and analyze high-frequency signals with precision. Learn key techniques to use it



### How to Measure RF Power Using a Spectrum Analyzer

In this guide, we'll walk through how to use spectrum analysis effectively for RF power measurement.

### How to Choose the Right Laser Diode Driver

Power supply quality and ripple performance  
Cable length, shielding, and inductance  
Wiring resistance and connector integrity  
Thermal management at both diode and driver levels

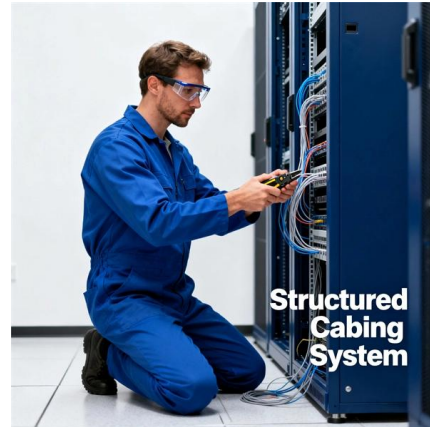


### How to Use a Spectrum Analyzer

Knowing how to use a spectrum analyzer effectively is key to being able to investigate the operation of RF circuits properly. One of the key ways to



The leading line: SPECTRO metal spectrometers  
The flagship SPECTROLAB S leads today's most comprehensive suite of advanced arc/spark metal analyzers.



### Analog Discovery 2(TM) Reference Manu

any environment, in or out of the lab. The analog and digital inputs and outputs can be connected to a circuit using simple wire probes; alternatively, the Analog Discovery BNC Adapter and BNC probes

### SPECTROMAXx Metal Analyzer , SPECTRO Analytical

Its record of reliability has helped make SPECTROMAXx perhaps the industry's best-selling arc/spark optical emission spectrometry (OES) analyzer. Its fast, accurate,



### HITEK POWER® MSS SERIES MASS SPECTROMETRY POWER SUPPLY

Compact, general-purpose MSS series modules perform reliably even under short-circuit or arc conditions, for applications that require a small footprint and dependable operation. They can be set



## ISQ EC and ISQ EM Mass Spectrometer Operating Manual (Revision E)

3.1 Mass Spectrometer Operating Principle The ISQ EC and ISQ EM mass spectrometers have been specifically designed and engineered for liquid chromatography (LC) or ion chromatography (IC)



## POWER ANALYZER MEASUREMENT LAB

WT1600 POWER ANALYZER DEMONSTRATION GUIDE A. OVERVIEW & OBJECTIVES The following is a basic demo procedure for the WT1600 Power Analyzer. This demo uses the power

## Microsoft Word

Turn off the power to the MINI BIN, Power supply and HV 502 power supply of Gamma-ray spectrometer GR611M. The detector assembly (tower like structure shown in the right side of Fig.6) consists of NaI



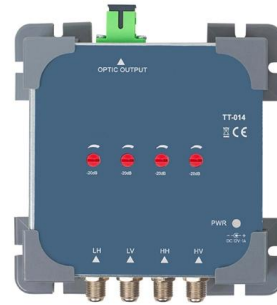
## Current Transformer Connection to a Power Analyzer

There are three primary methods of connecting an external Current Transformer / Transducer (CT) to a power analyzer. Method A - Current output terminals of the



## NMR instrumentation

Be aware that some spectrometers have a fuse in the rf output line, after the power amplifier's output connector, as protection against mistakes, like pulse programs with excessive



## Contact Us

---

For datasheets, pricing, or custom high-speed optical interconnect solutions, please visit:  
<https://www.syropy.com.pl>