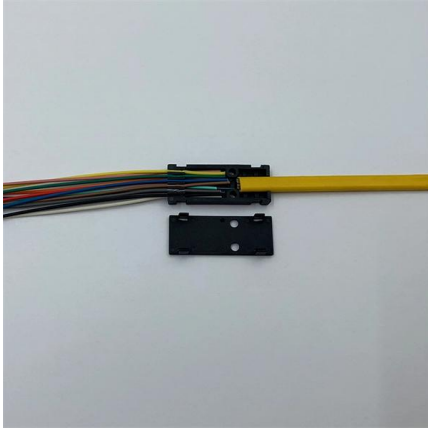


How to connect ribbon fiber to a fusion splice tray





How to connect ribbon fiber to a fusion splice tray

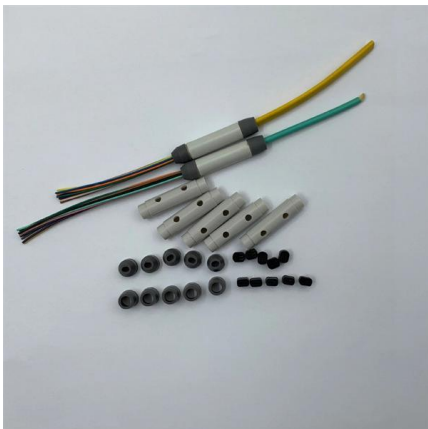


VHO-Splice-ribbon.ppt

This FOA virtual hands-on (VHO) tutorial on fiber optics covers fiber optic cable splicing using a typical ribbon fusion splicer. It is copyrighted by the FOA and may not be distributed without FOA

18 Mass_Fusion_Splicing_of_Optical_Fiber_Ribbon_Cable_A

Ribbon cable can be spliced more rapidly by using mass fusion splicing technique. This application note provides basic understanding and process of mass fusion splicing of optical fiber ribbons.



Fiber Optic Splicing Equipment

Fiber Instrument Sales has a wide variety of fiber optic splicing equipment such as fusion splicers from AFL, Sumitomo, FITEL, and FIS. FIS also splicing tools and accessories such as cleavers, thermal

Save Time by Ribbonizing: A Faster Way to Splice Fibers

A single splice tray typically accommodates 12 ribbons for 144 fibers. Each ribbon is stripped and cleaved with special tools provided with the ribbon splicer, cleaned



Equipped with a removable **Mounting Plate** inside the enclosure, enabling customized drilling and secure component mounting.



How To Splice and Tray Ribbon Fiber Optic Cable

Fiber optic splice closure 432F build start to finish Unbelievable Workers , Working with Talented Engineers. EP1 #construction #adamrose #workers #smart

OSE Splice Trays

A ribbon strain-relief kit is required to secure and transition ribbon fibers without tubing to the splice tray (Figure 7). This kit is provided with the OSE-ST-3 splice tray.



Fiber Optic Splicing Services , Fusion and Mechanical

iFiber Optix provides expert fiber optic splicing services, including fusion and mechanical splicing, to ensure low-loss, high-quality network connections.



Ribbon Splice Tray Cassette for Vault Splice Cabinet (VSC)

1.1 This instruction describes the recommended procedure for the installation of optical fiber with ribbon fiber splices into the VSC ribbon splice tray cassette (Figure 1). The cassette comes with heat-shrink



Instruction

Ribbon Splice Tray Instructions 1 When using oval jacketed ribbon, lay directly into ribbon jacket holder. Note: Distance from jacket to splice point should be no more than 88 mm (3 1/2 in.) to insure jacket is

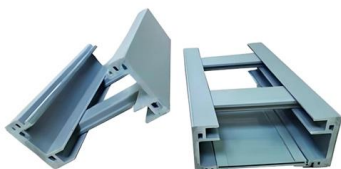
Essential Guide to Fiber Optic Splice Tray Solutions

The current report is intended to examine the range of fiber optic splice tray solutions, including their significance in enhancing the profiling,



48 Fiber Splice Tray Grey for Fiber Network Organization and

48 Fiber splice tray? A 48-fiber splice tray is a fundamental component in fiber optic networks designed for the organization, protection, and management of spliced optical fibers. It is a critical element





How To Splice and Tray Ribbon Fiber Optic Cable

I built One Up Techs Skool to give you everything I wish I had when I started: Step-by-step lessons that take you from beginner to advanced A private



Splice Tray Kit, Fusion Splice Ribbon Fiber

The 144-Fiber transparent fusion splice tray is ideal for fusion splicing ribbon fiber. The see through cover and mylar insert enable easy viewing when visual fault



The FOA Reference For Fiber Optics

Fiber Optic Cables - Ribbon Fusion Splicing This virtual hands-on page will take you through the steps involved in the process. Look at the slide graphics and then read the notes below. The notes explain



How To Splice Ribbon Fiber

As we know ordinary fiber splicing machine is generally refers to the single core fiber fusion splicer, but except this, there are special models used for



Splicing a 288-Fiber RocketRibbon(TM) Subunit into a Single Splice

When adding additional furcated cable subunits to the tray, the small cable tie will have to share the opening with the previous cable subunit's cable tie to fit all the cable subunits onto the same side of

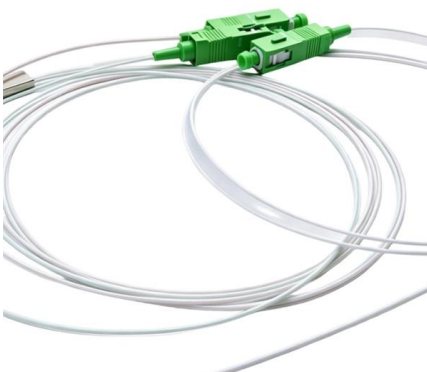


Ribbon Splicing with the Fujikura 90R

Watch a live ribbon fiber splicing demonstration using the Fujikura 90R fusion splicer, one of the most advanced and reliable tools for high-density fiber optic networks.

Splicing a 288-Fiber RocketRibbon(TM) Subunit into a Single Splice Tray

Secure the transport tubing from the furcated 96-fiber and/or 192-fiber cables to the splice tray using small cable ties following the instructions in SRP 001-285. Measure each individual ribbon to the



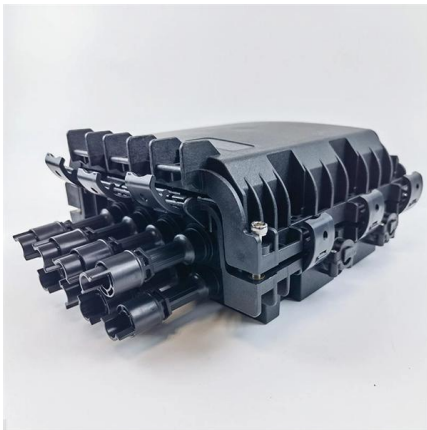
AshwinD24's gists · GitHub

GitHub Gist: star and fork AshwinD24's gists by creating an account on GitHub.



How to do a fusion splicing in a fiber optics splice tray

Beyondtech's Splice trays are used to protect and hold fiber optic splices and store extra fiber in rack mount housings. Termination boxes keep fibers save in FTTH structures.



18 Mass_Fusion_Splicing_of_Optical_Fiber_Ribbon_Cable_A

Abstract To build a fiber optic network, one may eventually join two fiber ends with a connector or fusion splicer. Ribbon cable can be spliced more rapidly by using mass fusion splicing technique. This

How To Splice Ribbon Fiber

Place the optical fiber in the V-groove of the fusion machine, carefully press the optical fiber presser and the optical fiber jig, set the position of the



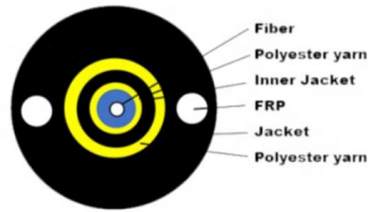
How to Ribbonize Fiber in Loose Tube Cable

Since mass fusion splicing is designed to be used with ribbon or ribbonized fiber cable, it is first necessary to construct ribbons out of loose tube fibers. You can construct ribbonized fiber in a few



72 Core Inline fiber Splice Closure and 16 Ports Optical

The box allows the installation of up to 16 subscribers, can hold 24 core fusion splices. When taking out the upper plate, the fiber enclosure can be used as



Fusion Splicing Machines , Shop now

Fusion splicing is used to physically join together two optical fiber ends. The process may vary, depending on the type of fusion splicer used. We carry a variety of machines to assist you in this

Slide 1

1.1 This procedure describes the standard techniques for installing ribbons in Sumitomo Electric's FT-PFST-B-R splice tray. It will review how to install ribbon fibers into the splice tray.



Centerline hiring Fiber Optic Technician in Cleveland, GA , LinkedIn

Perform fusion and mechanical splicing of single-mode and multi-mode fibers, including ribbon fiber splicing. Prepare and terminate fiber optic cables using industry-standard methods and tools.

High-Capacity Mass Fusion Splice Cabinet



Rack Mount

Our compact, high-density, indoor Mass-Fusion Rack-Mount Splice Cabinets are perfect for data center interconnection applications. They are designed to provide



Contact Us

For datasheets, pricing, or custom high-speed optical interconnect solutions, please visit:
<https://www.syropy.com.pl>