

How to connect grounding in the distribution box





Overview

Attach a ground wire from one of the threaded studs (A) at the bottom of the housing, to the mounting plate (B). 26 mm² (10 AWG) ground wire must be used, and in all other markets a 6 mm² must be used. Today, we're diving deep into the world of distribution box grounding, breaking down the standards, and shining a light on those sneaky mistakes that even experienced electricians sometimes make. Whether you're a seasoned pro or just starting out, this comprehensive guide will give you practical. Preparation: First, you need to prepare some necessary tools, including grounding wire, grounding rod, voltmeter, insulating gloves and insulating tools. How to make proper & safe electrical ground wiring connections in the box: This article describes options for connecting a metal electrical box to the grounding conductor & connecting the grounding conductor to a fixture such as a ceiling light or ceiling fan.



How to connect grounding in the distribution box

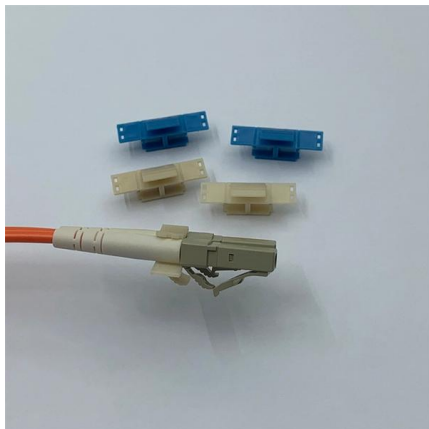
How do you ground a plastic electrical box

Here are the steps on how to ground a power distribution box: 1. Preparation: First, you need to prepare some necessary tools, including



on video How to Wire a Home Distribution Box

How to Wire a Home Distribution Box - Step-by-Step , Distribution DB box wiring diagram
Welcome to our channel! In this video, we'll walk you through the



Correct Connection Method Of Grounding Wire Of

Generally, copper core wire is selected as the ground wire and connected to the PE wiring bar. When connecting, it is necessary to strip the wire

Grounding Practices in Power Distribution Systems

Connection and Protection: It is crucial to connect grounding transformers to the system in a way that ensures reliable grounding and effective fault detection.



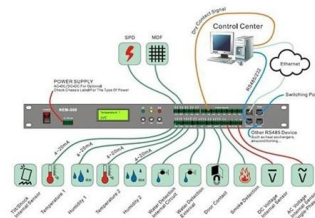
Distribution box with standard cable (for up to 4)

With this convenient distribution box with a standard pin cable you can connect up to 4 grounding products with a grounded wall socket or a grounded extension cord



How To Ground Your Electrical Panel and Service Disconnect

Electrical Grounding & Bonding: Top Mistakes to Avoid for a Successful Installation: Don't make common mistakes that can lead to a dangerous electrical system. Follow this video to learn what to



Stainless Steel Distribution Box Installation Manual: How To Properly

When inspecting the interior of a stainless steel outdoor electrical box distribution box, pay attention to the copper or tin-plated terminals on the base plate or side walls. These locations are usually marked



Electrical Box Ground Wire Connectors &



How to make proper & safe electrical ground wiring connections in the box: This article describes options for connecting a metal electrical box to the grounding conductor & connecting the grounding



Size determination, installation method and wiring mode

The distribution box is the central hub of the home circuit and the general control of our daily power consumption. It is an indispensable electrical equipment. If there

DISTRIBUTION BOX

Attach a ground wire from one of the threaded studs (A) at the bottom of the housing, to the mounting plate (B). Attach a second grounding wire from the mounting plate (B), to the factory



A step-by-step guide to wiring your breaker box

Learn how to read and understand wiring diagrams for breaker boxes to ensure proper electrical configurations and safety measures.



A Step-by-Step Guide to Wiring an Electrical Panel Box

A Step-by-Step Guide to Wiring an Electrical Panel Box An electrical panel box, also known as a breaker box or a distribution board, is a crucial component of any



Grounding System Installation Standards for Distribution Boxes and

Whether you're a seasoned pro or just starting out, this comprehensive guide will give you practical insights into proper grounding techniques, with a special focus on how selecting quality materials

How to Install a Cable Distribution Box Safely and

Misconception: If the cable distribution box is not grounded or has poor grounding, it is easy to cause electric shock accidents when the box is



How To Ground An Electrical Panel: 8 Steps With Video

Electrical panel grounding is one of the most important factors regarding electrical safety. While a ground wire is not strictly necessary for



How To Ground A Circuit Breaker Box Safely: A Step-by

This guide will walk you through the process of grounding your circuit breaker box, covering everything from identifying the components to the final

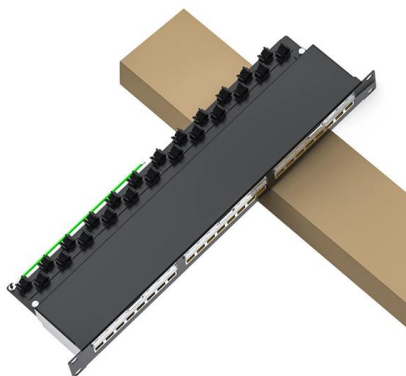


How To Ground Electrical Enclosure: The Complete Guide

Often, you land the incoming ground onto a backpanel-installed grounding terminal, bar, or lug. This connector links the ground conductor to

How to Ground an Electrical Panel: A Complete Guide

Learn how to ground an electrical panel step-by-step. Ensure safety, code compliance, and protect your home from electrical hazards.



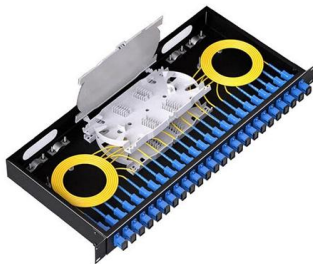
How to Wire a Home Distribution Box

How to Wire a Home Distribution Box - Step-by-Step , Distribution DB box wiring diagram
Welcome to our channel! In this video, we'll walk you through



Nine Recommended Practices for Grounding

The grounding pin is not electrically connected to the device yoke, and, so, not connected to the metallic outlet box. It is therefore "isolated" from the



Practice for good grounding and bonding a home wiring

Bonding and grounding explained All home electrical systems must be bonded and grounded according to code standards. This entails two tasks: First,

Grounding Bar for Electrical Boxes , Installation & Sizing Guide

Learn how to select and install a grounding bar for electrical boxes, including sizing tips and ground bar options for metal enclosures.



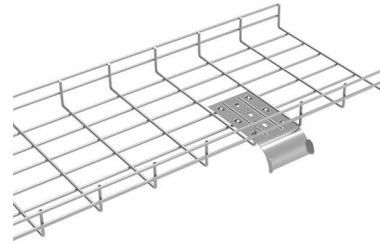
How do you ground a plastic electrical box

Overall, grounding a plastic distribution box is a process that requires specialized knowledge and skill. If you are not sure how to proceed, you should



How to ground the low voltage distribution box?

The low-voltage distribution box, as a device for regulating the circuit system, needs to be so. How should the low-voltage distribution box be grounded? Now let's



Contact Us

For datasheets, pricing, or custom high-speed optical interconnect solutions, please visit:
<https://www.syropy.com.pl>