

# How to connect cable trays in a vertical shaft





## How to connect cable trays in a vertical shaft

---



### CABLE TRAY SYSTEMS GUIDE

Some applications may require the cable tray to support the weight of a single, dead object in addition to the cable loads. Specifications typically require this to be applied at the midpoint of the span between

### Installation Guide

The ends of the tray fit into channels at the margins of the NoSplice support, then (supplied) Ground Splice is secured to the support. When utilizing the NoSplice, supports must be placed approximately



### INSTALLATION GUIDE

To ensure that the complete ladder tray wiring system performs as designed, it is important that it is properly installed. Personal injury as well as property damage will result if proper installation and



### Types of Cable Trays - Advantages, Applications and Sizes

Explore the types of cable trays, their advantages, applications, and standard sizes. Learn how they improve cable management and support various industries.



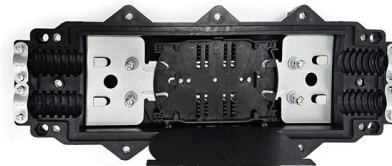
### Cable Trays Installed Vertical In A Different Manner , Eng-Tips

Most of them tend to be some sort of vertical rail with hooks attached in which the cable hangs. This keeps the cables supported should the cable ties (still required) fail.



### Solved: Cable Tray connections vertical

The main cable tray backbone will be installed in the building's four-story shaft. From it, a dedicated floor cable tray will branch out at each level.



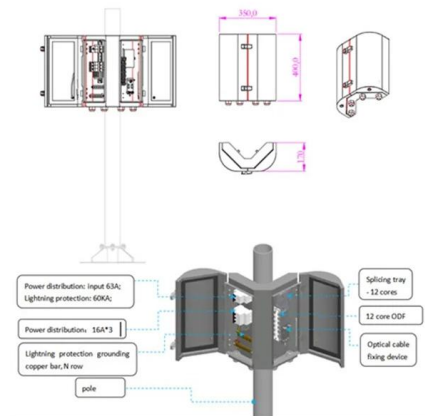
### How to install Cable Trays - Best Guide in 2026

Step-by-step on-site guide: learn how to plan, mark, support, and install cable trays correctly, from shop drawing approval to final checks.

### Instrumentation Cable trays Installation in vertical



The above issues can be minimized to a great extent if we can install the instrumentation cable trays in vertical orientation. Although a little bit higher



### Connecting Cable Trays: Your Guide to Secure and

Learn common methods for connecting cable trays safely and efficiently. Our guide covers splice plates, quick-connects, and key tips for secure

### Cable Tray Trunking & Ladder Installation Method for

Cable Tray, trunking and ladder will be properly supported and stacked in a flat surface. Tray, trunking and ladder will be stored in a covered area to prevent



### Cable Tray Technical Guide A practical guide to product selection and

Cable Tray Technical Guide A practical guide to product selection and installation This guide for engineers and installers has been developed by ABB as a practical reference regarding cable tray



## Cable Trays Installed Vertical In A Different Manner , Eng-Tips

This may sound dumb, but it happens when somebody non-electrical plays electrical. We have been routing our cable trays horizontally along the conveyors as per code and standard

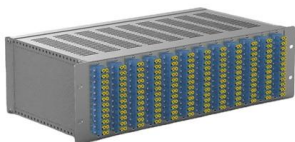


## Best Practice Guide to Cable Ladder and Cable Tray Systems

This guide covers cable ladder systems, cable tray systems, channel support systems and associated supports intended for the support and accommodation of cables and possibly other electrical

## What is a Vertical Cable Tray?

When planning cable pathways, the horizontal runs often get the most attention. However, the vertical cable tray is an equally critical component that



## Mastering Cable Tray Installation , Step-by-Step Guide for a Seamless

Learn how to install cable trays correctly. Get the ultimate step-by-step guide on setting up a seamless and reliable cable management system.

## Cable Tray Technical Guide A practical guide to product selection and



Cable tray is considered to be a system. It must provide continuous support for cables, and the electrical continuity of the cable tray system must be maintained.



### Cableizer

Installation considerations For cable pulling in vertical shafts, you have to consider the weight of the cable hanging in the shaft. You also have to consider the force

## GENERAL INFORMATION

Cable trays or raceways often provide a convenient, safe and efficient method of fiber optic cable installation. Trays can be installed in ceilings, below floors and in riser shafts. When installing fiber



### A Guide to Installing and Supporting Electrical Cable Trays

This guide covers the critical steps, from selecting the right electrical cable tray and performing accurate cable fill calculations to managing a safe cable pull through



## Typical Design Philosophy of Cable Trays for Power

Vertically running cable trays in cable riser/shaft shall be supported at an interval of 1000 mm. In case cables are to be laid over the top of switchgear panels, a



## Cable Tray Spacing Standards for Installation and Safety

Key Factors Impacting Cable Tray Spacing  
Understanding cable tray spacing is key to meeting safety regulations and maintaining system

## Best practice guide to cable ladder and cable tray

Cable ladder and cable tray systems The following recommendations are intended to be a practical guide to ensure the safe and proper installation of



## Mastering Cable Tray Installation , Step-by-Step Guide for a Seamless

Mastering cable tray installation is crucial for creating a safe, organised, and efficient cable management system. By following this step-by-step guide, you can ensure a seamless setup that



There are different ways to do such an installation, for example using a second steel wire for breaking or by pushing instead of pulling the cable using multiple



### Cable Laying: Everything You Must Know

After determining the routing of the cabling, a structured cabling project initially needs to consider the laying of cable trays, which can be made of metal, conduit, or

### Verticals Cable Tray Management Solutions , Cable

Hutaib Electricals, a trusted cable tray manufacturer in India, offers vertical cable management solutions for high-rise buildings. Their basket cable trays and wire



## Contact Us

For datasheets, pricing, or custom high-speed optical interconnect solutions, please visit:  
<https://www.syropy.com.pl>