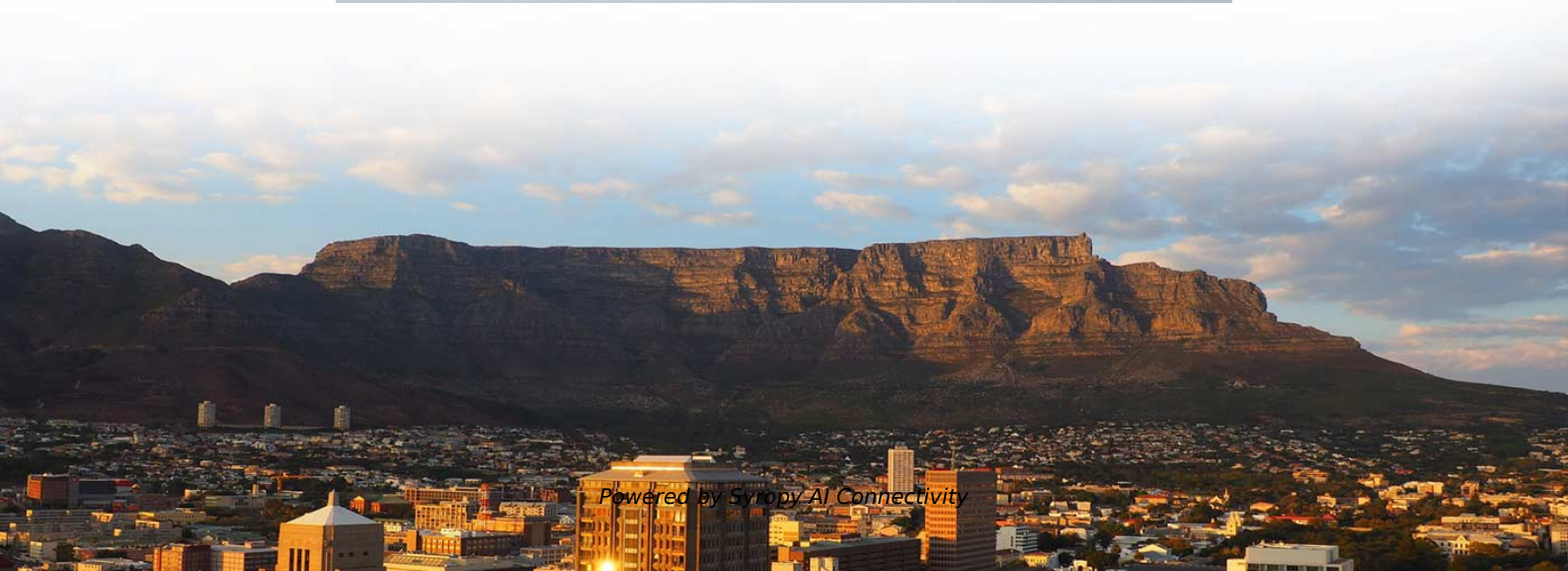


# **How to connect a 52-port access switch**





## Overview

---

Power on the switch, and connect your computer to the switch using an Ethernet cable. I'm trying to set up a network for the organization I'm currently posted at and in order to do that I need to access the CLI of the following switch: The console port of the switch is DB9 (male) and not RJ45, so I cannot connect the regular RJ45 - DB9 cable to my pc's DB9 (male) console port. The D-Link DGS-1210 Series Smart Managed Switches are the latest generation of switches to provide increased Power over Ethernet (PoE) output, a range of physical interface types, multiple management interfaces, and advanced Layer 2 features. The 24MP, 28MP, 52P and 52MP models of the switch can deliver a maximum of 30 Watts to any PoE port.



## How to connect a 52-port access switch

---



### 52-Port Gigabit Smart Managed Switch with 52 RJ45

The DGS-1210-52 switch comes with 52 Gigabit copper ports capable of connecting to existing Cat.5 (or higher) twisted-pair cables. Additionally, the last 4 ports of

### User manual D-Link DES-1210-52 (English)

Equipped with 48 basic switching RJ-45 Ethernet ports and 2 Gigabit Ethernet (copper) ports, the DES-1210-52 offers wired connectivity. Additionally, it has 2



### es\_manual

Chapter 1, Introduction, introduces you to the 52-Port GbE (PoE) Managed Switch. Its purpose, features and benefits are presented, its front and rear panel components are described,



### Welcome to Channel Dive , Channel Dive

Welcome to Channel Dive. We're Informa TechTarget's new publication, focused on delivering daily news and analysis for executives at North



### DGS-1210-52MP 52-Port Gigabit Smart Managed PoE

These models include the DGS-1210-10P, DGS-1210-10MP, DGS-1210-28P, DGS-1210-28MP and DGS-1210-52MP. Using the switch's management interface, an



### UniFi Remote Management via Site Manager

Direct Connections A Direct Connection automatically activates when accessing a site via Site Manager while connected to the same local network. This provides a



### unsupervised\_topic\_modeling/topics/en/17/100/100/topics at

Contribute to annontopicmodel/unsupervised\_topic\_modeling development by creating an account on GitHub.



## DGS-1210-52 52-Port Gigabit Smart Managed Switch

Using the switch's management interface, an administrator can control various PoE functions, such as remotely rebooting cameras or access points, from anywhere



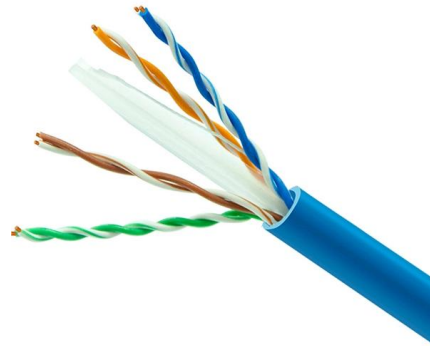
## 8 Best 52-Port Gigabit Ethernet Switches for High

Navigate through the top 8 52-port Gigabit Ethernet switches that promise high-performance networking solutions--discover which one is perfect



## SSE- G2252-G2252P\_Switch\_Installation\_Guide

This chapter covers how to connect the switches using network cards to PCs and servers, as well as to other switches and hubs. This chapter lists and describes hardware



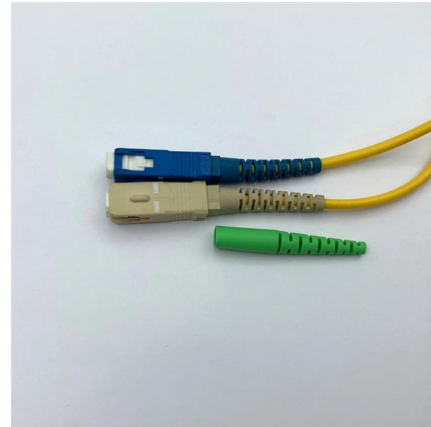
## server

Both my device and the host through which i'm trying to access are in the same subnet. Scenario: I have a switch and a server in same subnet. I have



### Cisco switch CLI connection

Cisco SG500-52P 52-port Gigabit POE Stackable Managed Switch The console port of the switch is DB9 (male) and not RJ45, so I cannot connect the regular RJ45 - DB9 cable to my pc's



### 28-Port and 52-Port Gigabit Ethernet Stackable Smart Managed Pro

For initial configuration, open a web browser on a computer that is on the same network and subnet as the switch and enter the switch's IP address. If you are unsure how to determine the IP address of

### Dell PowerConnect 5212 Systems User's Guide

You can access the console interface from the RS-232 serial port or a Telnet connection. The console port uses a standard null-modem cable. For instructions on configuring your switch using the



### support.omadanetworks

Omada Access 52-Port Gigabit Switch with 32-Port PoE+



### Cisco SG300-52 50-Port 10/100/1000 Gigabit Managed Switch : Manual

User names and passwords are both case sensitive and alpha-numeric. PAGE 8  
Troubleshoot Your Connection If you cannot access your switch from the web-based interface, the switch may not be



### DGS-1210-Series\_Manual cover.psd

The switches within the same L2 network segment connected to the user's local PC are displayed on the screen for instant access. It allows extensive switch configuration settings, and basic configuration of



### Cisco (SG300-52P-K9-NA) 52-Port Gigabit PoE Managed Switch

The switch can be accessed and managed by two different methods; over your IP network using the web-based interface, or by the Command Line Interface (CLI) through the console port.



### DGS-1210-52 52-Port Gigabit Smart Managed Switch

The DGS-1210 Series comes equipped with a complete lineup of L2 features, including IGMP snooping, port mirroring, Spanning Tree Protocol (STP), and Link





## Getting Started Guide For D-Link Web Smart Switch

To access it from your computer, users must first ensure that a valid connection is made through the Ethernet port of the Switch and your PC, and then click Start > Programs > Accessories > Command

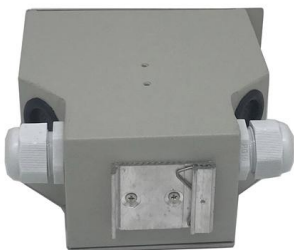


## 28-Port and 52-Port Gigabit Ethernet Stackable Smart Managed Pro Switch

Discover and register the switch If the switch is connected to a WiFi router or access point and to the Internet, you can use the NETGEAR Insight app to discover the switch in your network, register the

## USER MANUAL Cisco SG350-52P 350 Series 52-Port

User manual for the Cisco SG350-52P 350 Series 52-Port PoE contain basic instructions that need to be followed during installation and operation. Before



## Cisco switch CLI connection

I'm trying to set up a network for the organization I'm currently posted at and in order to do that I need to access the CLI of the following switch: The console port of the switch is DB9 (male)



### NETGEAR S3300-52X INSTALLATION MANUAL Pdf

Advertisement Download this manual Installation Guide 28-Port and 52-Port Gigabit Ethernet Stackable Smart Managed Pro Switch with 2 Copper 10G and 2 SFP+



### LANCOM GS-3652XP Multi-Gigabit PoE+ Access 52-Port-Switch

Hohe Leistungsfähigkeit auf 52 Ports Der LANCOM GS-3652XP ist ausgestattet mit 12 2,5 Gigabit Ethernet- und 36 Gigabit Ethernet-Ports sowie 4 SFP+-Ports, die Übertragungsraten von bis zu 10

### MR52/53 Installation Guide

The MR52/MR53 Installation Guide describes the installation procedure for the MR52/MR53 access points. Additional reference documents are available online at [meraki.cisco.com/library/](http://meraki.cisco.com/library/).



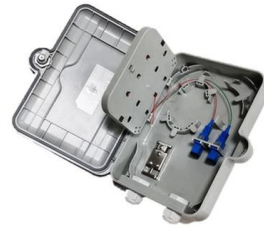
### 52-Port Gigabit Smart Managed PoE Switch

The DGS-1210 Series comes equipped with a complete lineup of L2 features, including IGMP snooping, port mirroring, Spanning Tree Protocol (STP), and Link

installation-guide.book



To manage the switch, you can make a direct connection to the console port (out-of-band), or you can manage it through a network connection (in-band) using Telnet, Secure Shell (SSH), a web browser,



### **D Link DGS 1210 52MP 52 Port Ethernet Switch**

Electrical power is transmitted along with data in a single cable to devices such as Access Points, IP cameras or IP phones 128 MB memory makes you productive with its smooth performance Create

### **Epic Games**

Sign in to your Epic Games account to access games, services, and more.



## **Contact Us**

---

For datasheets, pricing, or custom high-speed optical interconnect solutions, please visit:  
<https://www.syropy.com.pl>