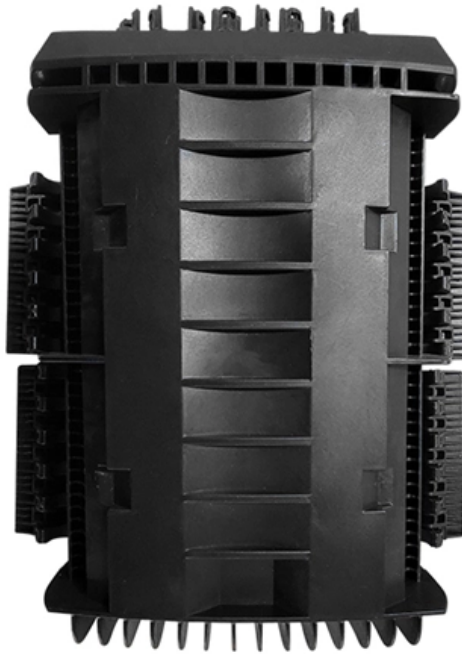


# **How to configure a core access Layer 2 switch**





## How to configure a core access Layer 2 switch

---

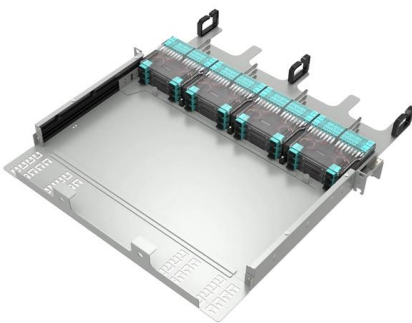


### Core Switch vs. Distribution Switch vs. Access Switch

The layer 2 switches collect the data from core switches, identify the type of data packet and the address of the access device. Further, the data packets are

### Microsoft Security Response Center Blog

Microsoft Security Response Center Blog



### Layer 2 VLAN Configuration on a Cisco Switch (with Example)

This post will deal with creating Layer 2 VLANs on Cisco switches and performing all relevant configurations. Up to 4094 VLANs can be configured on Cisco catalyst switches.

### ?Dell Community , DELL Technologies

Join. Learn. Earn. Get the help you need from the people in your own community



### HPE Aruba Networking CX switches

HPE Aruba Networking CX 6300 Switch Series Layer 3 stackable access and aggregation switches with Multi-Gigabit Ethernet, High Power PoE, and up to



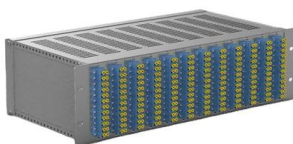
### Access, Distribution, and Core Layers Explained

This tutorial provides an overview of the access, distribution, and core layers and explains two-tier and three-tier campus LAN designs.



### Gartner , Delivering Actionable, Objective Insight to

Gartner provides actionable insights, guidance, and tools that enable faster, smarter decisions and stronger performance on an organization's mission-critical priorities.



### Support



It describes how to configure a Layer 2 network, including:

- Flow control and load sharing.
- Isolating users within a VLAN and dividing VLANs.
- Eliminating Layer 2 loops.



### Configuring Layer 2 Switching

You can configure Layer 2 switching ports as access or trunk ports. Trunks carry the traffic of multiple VLANs over a single link and allow you to extend VLANs across an entire network. All Layer 2

### Free Markdown to HTML Converter

Convert your markdown to HTML in one easy step - for free!



### Core Switch vs. Distribution Switch vs. Access Switch

Comprehensive guide to Core, Distribution, and Access Switches. Roles in the network and important parameters explained.



## Distribution & Core layer switch configuration

I want to configure 6500 as core, 4500 as distribution & 3500 as access layer switch for the campus lan. As best practice where should i configure intervlan routing on core 6500 or on



## Cisco 3 Layer Model

Traditional design models call for modularizing the network and that is important but also for creating hierarchical modules. The "core distribution access" model calls

## Cisco Catalyst 9000 Switching Family

Take control of your hybrid work with Catalyst 9000 enterprise LAN switching.



## Windows 11 preview is now available on Azure Virtual

I think the Azure Windows 11 Preview VM is only for the upcoming Windows 11 final release (October 05) and not for next preview releases in the



## Core Switch vs Access Switch , Definitions and Key Differences

This article focuses on the hierarchical internetworking and core switch vs access switch differences. We also discussed the core switches type and built a basic understanding of how a



### L3 or L2 Link between Core Switches

A more proper design would be to put them into a data center, as the data center has its own access and distribution (sometimes called aggregation) layer switches, and the distribution

## Introduction to Core Switch Configuration

In this switching, transmission is determined not only by MAC address (layer 2 bridge) or source/destination address (layer 3 routing), but also by TCP/UDP (layer 4) using port Numbers that



## Understanding Core Switch: What It Is and How to

The layer that lies between the access layer and the core layer is known as the distribution or aggregation layer, while the backbone of the network





## Use Core Switch as an L2 Access Switch

Can I use a CORE switch as an ACCESS Layer 2 switch? The end



## Cisco Switch Layer2 Layer3 Design and Configuration

Network Diagram The diagram above shows one Layer 3 switch used for Aggregation, three Layer 2 switches used for access purposes and one router for

## Cisco Switch Layer2 Layer3 Design and Configuration

One simple and popular switch design scenario will be shown in the following tutorial. This scenario will fit most SMB networks (or even bigger ones) that have a few



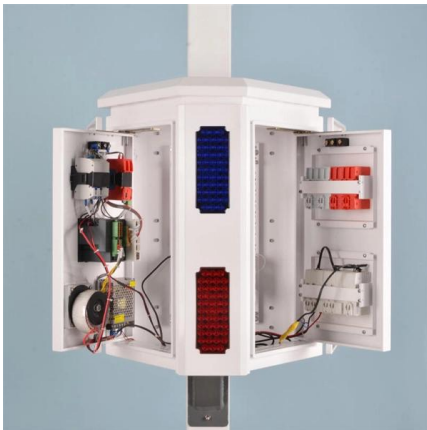
## OpenCode v1.14.49 released. TL;DR: v2 provider/model catalog APIs

- o Adds experimental v2 provider/model listing APIs via /api/provider and /api/model, backed by a core catalog/plugin layer and regenerated SDK types.
- o Adds DigitalOcean support: OAuth



## How to Configure a Cisco Switch (step by step)

If you're looking to configure a switch for the first time, this post is for you. Learn step-by-step configuration commands for Cisco IOS Switches.



## Two-Tier Server Access

Prepare switches for deployment in Aruba Central for building a Two-Tier Data Center. The L2 Two-Tier Data Center uses an MC-LAG core for

## WORLD WIDE WEB JOURNAL Home

will open to start the export process. The process may take but once it finishes a file will be downloadable from your browser. You may continue to browse the DL while the export process is in



## Office 2016/2019 have reached end of support - here's

Microsoft is committed to helping you make the transition to a supported configuration. Here is an overview of our recommendations and



## Core, Distribution, and Access Layer



## Explained with

Core, Distribution, and Access Layer Explained with Examples Ever tried explaining core, distribution, and access network layers to someone who



## Understanding the Core Switch: Key Differences and Uses

Explore the core switch's role as the backbone of your network. Discover key differences, uses, and insights into layer 3 core switch technology.

## Contact Us

---

For datasheets, pricing, or custom high-speed optical interconnect solutions, please visit:  
<https://www.syropy.com.pl>