

How to configure a 100 Gigabit fiber optic switch





How to configure a 100 Gigabit fiber optic switch

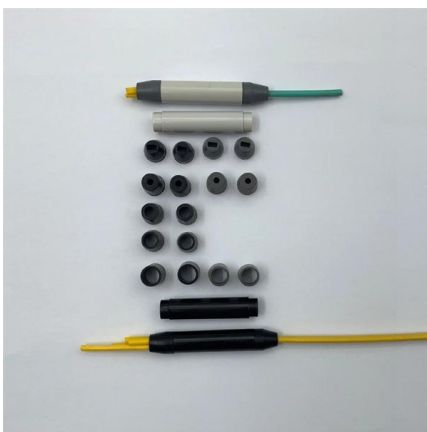
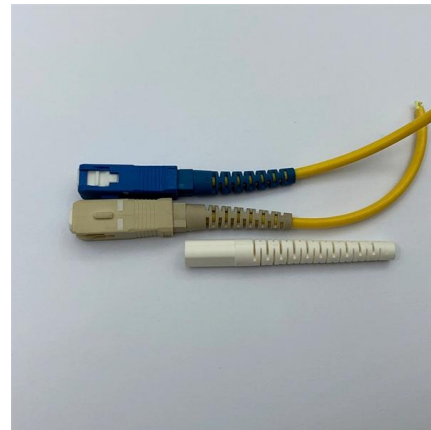


Understanding the Power of a 100GB Switch in Your

A: When choosing a 100GB managed switch, look for features like support for 100-gigabit ethernet, multiple qsfp28 ports, poe (power over ethernet)

Gigabit Ethernet Interfaces , Junos OS , Juniper Networks

For QFX5100 switches, autonegotiation is also enabled by default on 10-Gigabit Ethernet interfaces and cannot be disabled. If you configure a 100 Mbps speed on the link partner, you must configure the



Unlocking the Potential of a Fiber Optic Switch in Modern Networks

Q: What are some benefits of using fiber gigabits in network configuration? Q: What is the role of an optical switch, and how does it operate in a fiber optic network? Q: In what ways does a

An introduction to SFP ports on a Gigabit switch , TechTarget

An introduction to SFP ports on a Gigabit switch SFP ports enable Gigabit switches to connect to a variety of fiber and Ethernet cables and extend switching functionality throughout the



ExtremeXOS® User Guide

ExtremeXOS allows you to specify the medium as copper or fiber when configuring ExtremeSwitching switches with combination ports. If the medium is not specified for combination ports then the

Connect Multiple Switches with Fiber Optic Cables

In this video, we'll delve into the world of fiber optics, exploring the reasons behind their necessity, introducing Fiber Switches and Fiber PoE



Installing 10 Gigabit SFP transceivers & fiber optic links between

This is a simple video showing how to install a 850nm fiber optic link using SFP transceivers between 2 10 Gigabit backbone switches. Covers transceiver installation, switch setup and link



24-Port 10/100/1000 Gigabit Switch with Webview and PoE

The Switch is equipped with two miniGBIC ports that have shared Gigabit Ethernet ports (12 and 24) which provide for the installation of one expansion module. These ports provide links to high-speed



How to Run QSFP28 100G Port in 40G, 10G, and 25G

Aside from the 100G mode, the QSFP28 100G port on the switch can also run in 40GbE, 4x 25GbE and 4x 10GbE mode, with the required hardware

Guide to Fiber Network Cards: 10G/25G/100G NIC

Comprehensive guide to fiber NICs: SFP/SFP+/SFP28/QSFP28 speeds, SMF vs MMF, DAC vs AOC, PCIe compatibility, installation steps,



EdgeSwitch ES-48-500W/ES-48-750W Quick Start Guide

Managed PoE+ Gigabit Switch with SFP+ Models: ES-48-500W, ES-48-750W



4 Port 10/100/1000 RJ45 to Fiber Switch

Our ESW-2206 optical fiber switch has 2 Fiber Optic SFP Module ports and 4 X 10/100/1000 Base-TX copper RJ-45. Works Best with Fibertronics Cat6 6 or Cat

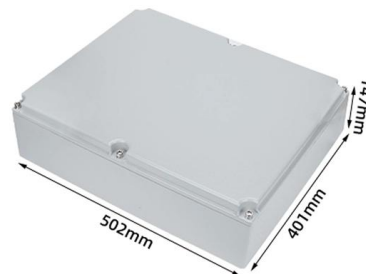


Connecting the Switch to the Network

Connect the other end of the cable to a 10/100/1000 Ethernet port on a network device. You are ready to connect the interface ports on each of the line cards to the network. The switch has an uplink module

What You Need to Know About the 100GbE Switch

There have been great strides in network technology with the creation of the 100 Gigabit Ethernet (100GbE) switch due to its unmatched data transfer



FS Community

Hier sollte eine Beschreibung angezeigt werden, diese Seite lässt dies jedoch nicht zu.



Gigabit SFP Network Switch Selection Guide for 2025

From a future-proofing perspective, gigabit SFP switches enable seamless upgrades to fiber optic networks as fiber becomes the standard for high-speed data transmission. While standard



Unleash Your Network's Potential: The Ultimate Guide

This guide will look at everything from the fundamentals of Gigabit Ethernet switches to determining the right one for your requirements. Prepare

UniFi Switch US-24 Quick Start Guide

This Quick Start Guide is designed to guide you through the installation and show you how to access the Configuration Interface. This Quick Start Guide also includes the warranty terms, and is for use with



How to Run QSFP28 100G Port in 40G, 10G, and 25G

Can I use the QSFP+ optics on the QSFP28 port? Whether it is possible to insert QSFP+ optics on QSFP28 ports to support 10G SFP+? Here



Arista Cabling Guide For 100G and 400G Optics

Arista Cabling Guide For 100G and 400G Optics
xx = Length in feet (Ex. "50" is 50Ft overall length)
xxx = Length in feet (Ex. "050 is 50Ft overall length)
xxxx = Length in feet (Ex. "0500 is 50Ft in



Unlock the Power of Connectivity: Exploring the 100gb

Unleash the potential of high-speed connectivity with a 100gb Ethernet switch board. Explore gigabit ethernet options for your network switch

100G Network Howto

It's very cool that I can set each port to be an uplink or access port, and visually see which ports are active. I also discovered that I can hook up the administrator port to another switch and access the



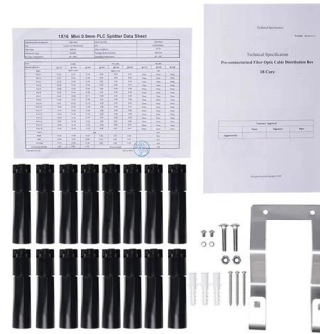
Gigabit Switch: What It Is, How It Works & Which to

Learn what a Gigabit Ethernet switch is, how it works, key features, and how to choose or connect one. Compare managed vs unmanaged and SFP



Gigabit/Hundred Gigabit/Core/PoE/Fiber Switch

The switch is the core equipment for monitoring network transmission. There are many critical technical parameters to consider when selecting



How to configure a 100 mbps ethernet speed to 1 gigabit

I had 75 mbps, just upgraded to 1 gigabit. The speed test shows 900/900 router speed to the Verizon servers. My device is only capable of 100 mbps speed. Is there a way to configure the

how to change speed at fiber ports

How to change speed at fiber-gig ports, as i referenced from internet that we can't change duplex & speed on fibre ports. But, now a days i m working on 7606 routers, having fiber gig ports & at some



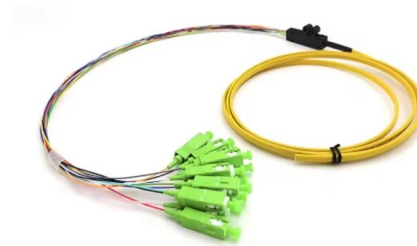
How to connect a new optic fibre to an ethernet switch

The objective is to run 1 or 2 additional optic fibre from the main switch down to the shed in the back of my garden and down to the garage as well. Here's a quick sketch to present the layout



(QFX10002) Port grouping and channelization for 100G interfaces

Solution For 100-Gbps channelization operation, the ports operate within port groups. Every three ports compose a port group. 100-Gigabit can be configured using 28-Gbps QSFP28



How to Connect Multiple Ethernet Switches Using Fiber

Most importantly, any upgrades and advancements in networking technology can be easily accommodated by existing fiber infrastructure, offering

Contact Us

For datasheets, pricing, or custom high-speed optical interconnect solutions, please visit:
<https://www.syropy.com.pl>