

How to check the sensitivity of relay protection



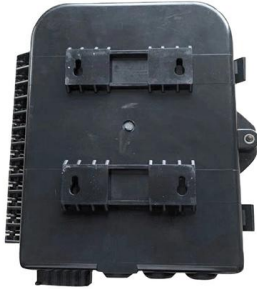


Overview

An operational current at relay terminals should be observed to ensure proper sensitivity. An assessment of sensitivity of the measuring elements of relay protection was performed. Based on simple examples of the generator-transformer unit protection from symmetrical short circuits, it was shown that the sensitivity factor is not a sufficiently objective measure of sensitivity of the. So, in this case, to protect the whole line, the setting has to be able to detect fault current above 150 A. This guide is designed to inform engineers, power system operators, and technical enthusiasts about the calibration process, its importance for different relay types, and best practices based on. The testing and verification of relay protection devices can be divided into four groups: Type tests are needed to prove that a protection relay meets the claimed specification and follows all relevant standards.



How to check the sensitivity of relay protection



Practical handbook for relay protection engineers , EEP

Relay protection circuitry This handbook covers the code of practice in protection circuitry including standard lead and device numbers, mode of

Protection Relay Testing and Commissioning

Digital and numerical protection relays use software for relay protection and measurement functions. This software must be properly tested to make sure that the protection relay follows all specifications



(PDF) Relay protection sensitivity integrated optimal placement and

The relay protection sensitivity evaluation was integrated into the proposed model and the particle swarm optimization (PSO) algorithm was developed to solve the nonlinear issue.

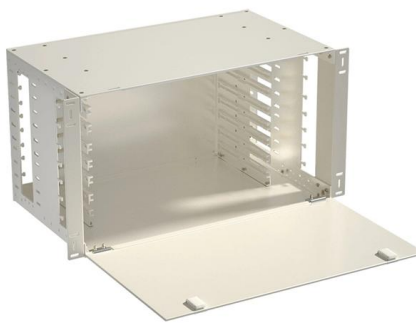
Protection Function Testing Procedure

Protection Function Testing Procedure: Step-by-step guide for stability, sensitivity & differential relay tests ensuring reliable substation protection



Basic protection relay knowledge

We need to detect all the faults in the feeder. Power system stability means also ability to maintain acceptable voltage. Problem with selectivity can also cause a loss of stability due to loss of too many



The Relay Testing Handbook: Generator Protection Relay Testing

Generator relay testing isn't hard, but you need to understand the basics first. You should not read this book if you haven't read and applied The Relay Testing Handbook: Principles and Practice, and/or



What are the standard methods used to test Protection Relays?

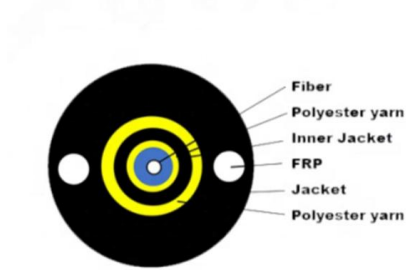
The testing of protection relays is one of the most important activities in the power systems to guarantee the reliability and safety of the power systems. There are many ways of testing





Protective Relay testing

Relay accuracy is a measure of how well a protective relay responds to a given input signal and produces a desired output action. It depends on several factors, such as the type of relay, the setting



Relay protection sensitivity integrated optimal placement and capacity

The paper is structured as follows. Section 2 discusses the IIDG effect on the relay protection sensitivity and section 3 presents the relay protection sensitivity integrated optimization method. The IIDG

Relay Testing and Maintenance , Delgado Relay Protection Reference

In conclusion, relay testing and maintenance are vital for ensuring the reliable operation of protective relays in power systems. Through testing, we can assess their performance and



Types of Protection Relays and Testing procedures

Exploring types & functions of protection relays in power systems, emphasising importance of testing procedures for reliability & safety.





Maximizing Line Protection Reliability, Speed, and Sensitivity

Abstract--This paper describes several commonly applied line protection schemes, including distance schemes, directional comparison schemes using distance and directional elements, and line current

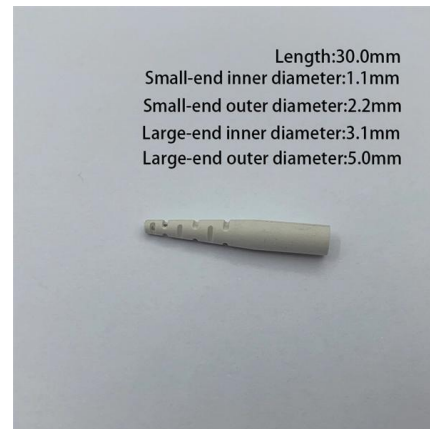


Protection Relay Testing and Commissioning

The testing and verification of protection devices and arrangements introduces a number of issues. This happens because the main function of protection devices is related to operation under fault

Selectivity and sensitivity of overcurrent relay protections

The paper discusses the conditions for setting the overcurrent protection and how they determine the sensitivity and selectivity of these protection in medium voltage power grids.



Essential Guide to Calibration of Protection Relays

Calibration of protection relays ensures reliable performance and safety in power systems. While electromechanical relays demand periodic





Protection System Testing

Check your electrical systems' reliability and safety with our thorough protection system testing procedure. Learn recommended procedures, testing

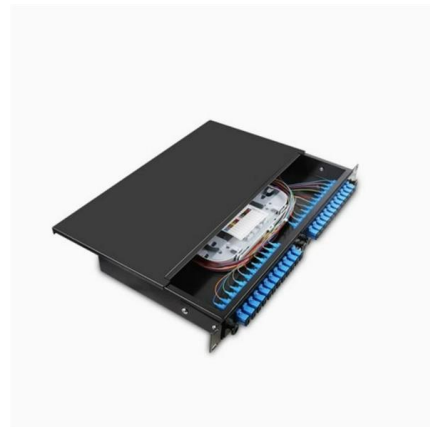


How to Test Protective Relays Correctly

How to Test Protective Relays Correctly Usually I try to keep my posts as simple and practical as possible. This post is a little different because I will discuss how I

ASSESSING THE SENSITIVITY OF RELAY PROTECTION

Based on simple examples of the generator-transformer unit protection from symmetrical short circuits, it was shown that the sensitivity factor is not a sufficiently objective measure of sensitivity of the relay



Reactor Differential Protection Stability & Sensitivity Test.

Testing the stability and sensitivity of Reactor Differential Protection (87R) is crucial to ensure that the protection scheme operates reliably under various operating



Testing Numerical Transformer Differential Relays

ABSTRACT Numerical transformer differential relays require careful consideration regarding how to test them properly. These relays provide different types of protection such as restrained phase



Types of Protection Relays and Testing procedures

Regular testing and maintenance of protection relays are essential to verify their proper operation, detect faults, and mitigate risks. By conducting

Practical handbook for relay protection engineers , EEP

The relaying equipment must be sufficiently sensitive so that it operates reliably when required under the actual conditions that produces least



Functional characteristics of Protection Relays

that all the components of the protection from the voltage and current signals to the dc power supply for the trip circuit to the internal components of the relay are checked for for functionality and integrity.



The Relay Testing Handbook: Principles and Practice

This online protective relay testing seminar follows Chris Werstiuk (author of The Relay Testing Handbook) as he tests a relay from start to finish. You'll learn the basic skills needed to test any



Assessing the Sensitivity of Relay Protection

An assessment of sensitivity of the measuring elements of relay protection was performed. Based on simple examples of the generator-transformer unit protection from symmetrical short

Contact Us

For datasheets, pricing, or custom high-speed optical interconnect solutions, please visit:
<https://www.syropy.com.pl>