

How to calculate the weight of cable tray elbows square meterage





Overview

This tool estimates tray self-weight from material density and an approximate metal volume. For solid and perforated trays, it treats the tray as a formed sheet: Developed sheet width per meter: $Dev = W + 2H + 2R$ Metal volume per meter: $V = Dev \times t \times 1 \times (1 - Open\%)$. In this guide, we'll walk you through the step-by-step process for calculating cable tray weight, while providing examples for both channel trays and ladder trays. Calculating the weight of a cable tray is not always easy, but by following some simple steps, it can be done accurately. For actual engineering practice, apply cable spacing, tray fill factors, and weight limits. The International Electrotechnical Commission (IEC) outlines clear guidelines in IEC 61537 for determining the appropriate tray or ladder based on mechanical strength, ventilation, electrical continuity, and.



How to calculate the weight of cable tray elbows square meterage

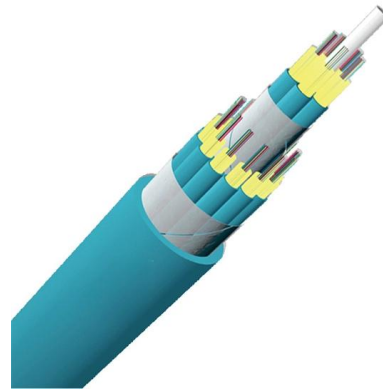


EE12: CABLE TRAY ANALYSER / CALCULATOR

Cable 8: pcs. Outer dia :. Kg/meter: Cable 9: pcs. Outer dia :. Kg/meter: Cable 10: pcs. Outer dia :. Kg/meter: Distance Required Between Each Cable: mm Spare Required in

Cable Tray Size and Dimensions: How to Choose the

Learn how to calculate the perfect cable tray size and dimensions for your electrical project. This guide covers load capacity, fill ratios, and industry



Cable Tray Technical Guide A practical guide to product selection and

Cable Tray Technical Guide A practical guide to product selection and installation This guide for engineers and installers has been developed by ABB as a practical reference regarding cable tray

Cable Tray Sizing Calculation Excel Sheet (Size & Weight)

Cable tray size includes tray width, tray length, tray weight and tray area. All the calculations are subjected to the requirements of the National



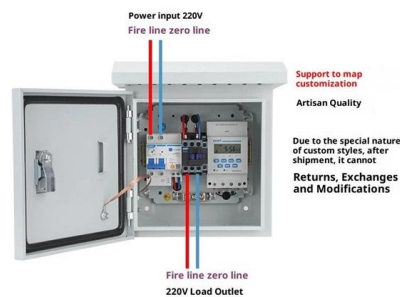
Cable Tray Size and Weight Chart

It lists the cable types, sizes, and quantities for each area. It then calculates the total cable outside diameter, weight per meter, and total weight for each area. Finally,

Cable Tray Weight Calculator

Compute tray weight from dimensions, thickness, and material density. Include covers, perforation, joints, and safety factor options. Download clear CSV and PDF reports for documentation.

Product Wiring Diagram



Cable Tray Sizing & Load Calculations Made Simple

Correct sizing prevents sagging, overheating, and premature failure. You don't need a PhD--just a consistent method. This step-by-step approach helps you determine width, depth,



Cable Tray Load Calculation , PDF , Technology

Cable Tray Load Calculation - Free download as PDF File (.pdf), Text File (.txt) or read online for free. Cable weight per meter (daN / m) = useful cross-section of



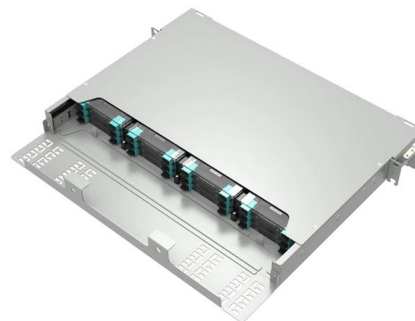
Cable Tray Size Calculation Guide , PDF , Length

The document provides a step-by-step calculation for determining the appropriate size of a cable tray based on a given cable schedule. It calculates the total



Cable Tray Sizing Calculator -- Free Electrical Tool

Calculate cable tray width and load rating requirements based on cable count, size, and weight. Includes support bracket spacing guidance for SWA and multicore cables.



How To Calculate Cable Tray Size , Step-by-Step Guide

Learn how to calculate cable tray size step-by-step, including formulas, standard sizes, and practical tips. Find out the best practices for



Cable Tray Size Calculation for Project Engineers

Cable tray size calculation is important for ensuring safe cable installation, proper heat dissipation, and enough spare capacity for future

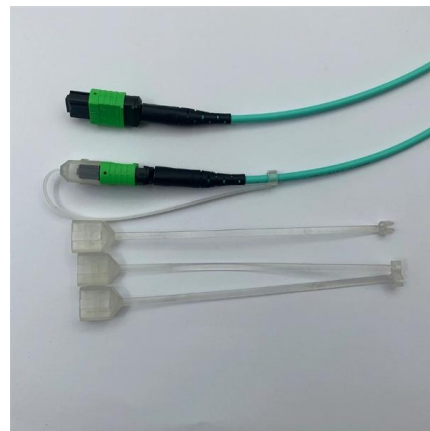


Cable Tray Size Calculation Guide

The document describes how to calculate the size of a cable tray based on the cables being installed. It provides the dimensions and weights of 3 different cable

Instrument Cable Tray Load Calculation: A Detailed Guide

This guide provides a comprehensive approach to calculating cable tray loads, considering various factors such as cable weight, tray weight, environmental



Tray and Ladder Sizing by Cable Capacity Calculator - IEC

Calculate tray and ladder sizes by cable capacity with our IEC-compliant calculator for efficient and accurate electrical installations.





Free Cable Tray Sizing Calculator -- IEC, AS/NZS, NEC, BS

Calculate cable tray fill ratio, weight loading, and derating factors for multi-standard compliance. This calculator features an interactive interface with advanced visualizations. Open the full calculator for



Cable Tray Weight Calculator

Cable Tray Weight Calculator Estimate cable tray self weight quickly for planning and procurement accurately. Choose materials and sizes. Export results instantly for schedules, submittals, and field

Cable Ladder Cable Tray Weight Calculation Guide

In this guide, we'll walk you through the step-by-step process for calculating cable tray weight, while providing examples for both channel trays and



Cable Tray Weight and Support Calculations

The document provides information on cable tray sizing including cable types and weights, tray sizes and weights, bending moment and deflection calculations to

Calculating cable tray weights and support



requirements

I recently came across a situation where there were several large cables (42 500MCM cables) being run in a single cable tray. Just prior to installation there became a concern over the

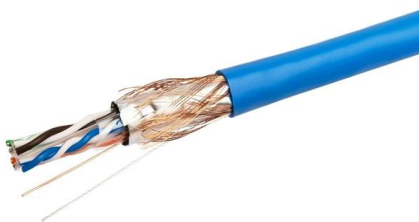


CABLE TRAY SYSTEMS GUIDE

Some applications may require the cable tray to support the weight of a single, dead object in addition to the cable loads. Specifications typically require this to be applied at the midpoint of the span between

How To Calculate Weight Of Cable Tray » Wiring Work

Calculating the weight of a cable tray is not always easy, but by following some simple steps, it can be done accurately. Understanding how to



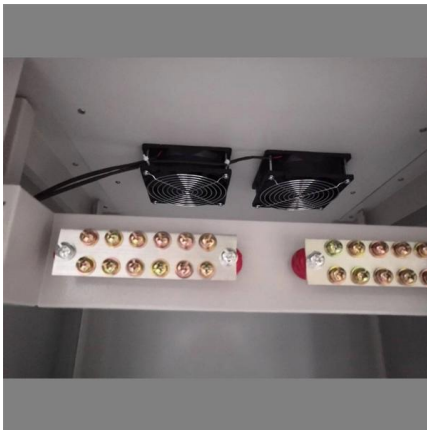
Cable Tray Sizes and Weights Chart , PDF

The document provides pricing information for ladder cable tray and perforated cable tray in Indian rupees per meter for various tray widths, material thicknesses, and



Cable Tray Capacity Calculator

Cable tray capacity refers to the maximum number of cables that can be installed in a cable tray without exceeding a specified fill ratio. The fill ratio is the percentage of the cross-sectional area of the tray



Cable Tray Fill Calculator

Solid bottom trays: 30-40% for power cables, up to 50% for control/instrumentation The fill capacity of a cable tray refers to the maximum amount of space that can be occupied by cables while maintaining

Contact Us

For datasheets, pricing, or custom high-speed optical interconnect solutions, please visit:
<https://www.syropy.com.pl>