

# **How to calculate the content of cable tray support frames**





## Overview

---

Cable tray support quantity can be calculated using a simple formula:  $\text{Support Quantity} = \frac{\text{Total Length}}{\text{Support Spacing}} + 1$ . In a typical project, a 20-meter cable tray with 2-meter spacing requires 11 supports. Our free calculator helps you determine the correct tray size based on NEC and IEC standards. Follow these simple steps: Define Tray Dimensions: Enter the width and depth of your planned cable tray (in mm or inches). IEC 61537 covers cable tray and cable ladder systems for the support and accommodation of cables, while NEC Article 392 governs cable. A cable support system consists of cable support lengths and system components, such as cable support fittings, support elements, mounting elements and system accessories.



## How to calculate the content of cable tray support frames

---



### Free Cable Tray Fill Calculator , NEC & IEC Compliant Sizing , Shielden

Easily calculate cable tray fill ratios with our free tool. Supports mixed cable sizes, NEC 40% rules, and metric/imperial units. Download your PDF report instantly.

### Cable Tray Sizing Calculator , Free Calculator , WiringCalcs

The Cable Tray Sizing Calculator employs well-established mathematical formulas and industry-standard reference data to size cable trays per nec 392 based on cable count, diameter, tray type,



### Calculating Suitable Size of Cable Tray

Cable trays are essential components in electrical installations, providing a safe and organized way to route and support electrical cables. The suitable size of a cable tray is crucial for



## SELECTION OF CABLE TRAYS

The cable volume is an important criterion for the selection of the correct cable support system; for which there must be sufficient space in the cable tray. As the



### **A Guide to Installing and Supporting Electrical Cable Trays**

A professional guide to installing electrical cable tray systems per NEC Article 392. Covers support, securing cables, and fill calculations.



### **How to Calculate the Cable Tray Support Quantity**

Learn how to accurately calculate cable tray support quantities in electrical installation projects. Our guide covers methods, tools, and practical



### **Cable Tray Sizing and Fill Capacity Calculator**

Calculate cable tray sizing and fill capacity based on tray dimensions, cable diameter, number of cables, and maximum fill percentage per electrical code.





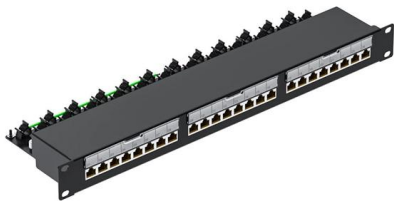
## Guide to cable support systems

The load capacity of the cable trays according to the support width can be read off in the diagram using load curves - here, shown as an example for a cable tray with the tray widths 100 to 600 mm.



### Cable Tray Fill Calculator

To calculate the fill ratio, divide the sum of the cross-sectional areas of all cables by the total usable cross-sectional area of the cable tray. Multiply the result by 100 to express it as a percentage.



### Cable Tray Fill Calculator

Solid bottom trays: 30-40% for power cables, up to 50% for control/instrumentation The fill capacity of a cable tray refers to the maximum amount of space that can be occupied by cables while maintaining



### Calculating cable tray weights and support requirements

The contractor could have broken these cables up into multiple cable trays to lessen the weight however he chose to run them all in one, perhaps to save on cable tray cost. If that's the case



## Cable Tray Fill Calculator Online

The Cable Tray Fill Calculator is a valuable tool used in electrical engineering and construction to determine the percentage of a cable tray that is



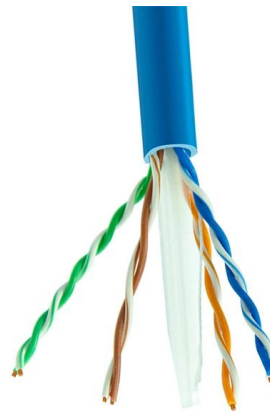
## Cable Tray Fill Percentage Calculator

This article provides a detailed guide on cable tray fill percentage calculation, ensuring safe, efficient, and compliant electrical installations.



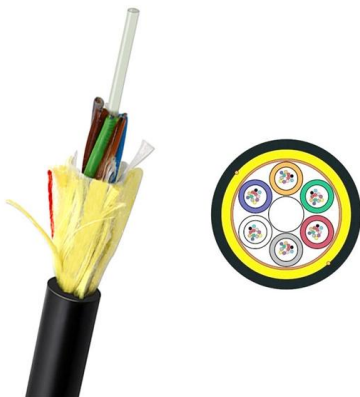
## Cable Tray Fill Calculator

Easily calculate the fill ratio and load capacity of cable trays with our Cable Tray Fill Calculator. Ensure safety, efficiency, and compliance with industry



## Cable Tray Capacity Calculator

Calculate cable tray capacity, fill ratio, width, height, or cable diameter from four known values using inches, feet, cm, or meters.





## An In-depth Analysis for Optimal Cable Tray Support Span

This study investigates how to define the longest cable tray support span considering constructability in order to reduce the number of supports which is a chief cost of a cable tray system.



### Cable Tray Technical Guide A practical guide to product selection and

**SOLID-BOTTOM CABLE TRAY** Providing additional cable protection, solid-bottom cable tray is sometimes preferred to support and protect numerous small instrumentation and control cables.

### Free Cable Tray Sizing Calculator -- IEC, AS/NZS, NEC, BS

Calculate cable tray fill ratio, weight loading, and derating factors for multi-standard compliance. This calculator features an interactive interface with advanced visualizations. Open the full calculator for



### Cable Tray Structural Design Guide , PDF

The document discusses different beam configurations that can be found in cable tray installations, including simple beams, continuous beams, cantilever beams,





## Steel Structure Calculation for Cable Tray , PDF

This document provides a calculation report for the steel structure of a cable tray rack. It includes details on the scope, references, loading assumptions, load



## A Guide to Installing and Supporting Electrical Cable Trays

This guide covers the critical steps, from selecting the right electrical cable tray and performing accurate cable fill calculations to managing a safe cable pull through

## Guide to cable support systems

Support systems for cable support structures are used to bridge large loads and support spacings and to create complex section routes. The systems allow large support spacings of wide span systems



## Cable weight and flexibility in context of cable tray capacity

Cable trays are used to support cables in various environments, including industrial plants, office buildings, and residential areas. The capacity calculator for cable trays is a critical tool



## Cable Tray Load Calculation and Sizing: Your Easy Guide

Worried about cable tray capacity? Learn simple cable tray load calculation steps. This guide helps you pick the right tray every time, keeping



## Best practice guide to cable ladder and cable tray

Cable ladder and cable tray systems The following recommendations are intended to be a practical guide to ensure the safe and proper installation of



## Cable Tray Sizing Calculator , IEC 61537 & NEC 392 Guide

Use this cable tray sizing calculator to check fill %, select tray size, and comply with IEC 61537 & NEC 392 with formulas, example and checklist.



## Cable Tray Fill Calculator

Cable Tray Fill Calculator Plan cable trays confidently with precise area math and presets for compliance. Set target fill, safety margin, and packing assumptions for projects across disciplines.





## Cable Tray Size Calculation for Project Engineers

Cable tray size calculation is important for ensuring safe cable installation, proper heat dissipation, and enough spare capacity for future



## Contact Us

---

For datasheets, pricing, or custom high-speed optical interconnect solutions, please visit:  
<https://www.syropy.com.pl>