

# **How to attach a wall-mounted elbow to a cable tray**





## How to attach a wall-mounted elbow to a cable tray

---



### Cable Tray Installation

Learn everything about cable tray installation with our complete guide. Discover types, steps, and safety tips for efficient electrical cable management.

### Running Horizontal Cable Trays flat against wall

Place them manually to connect the trays and change size parameters to match. Example below show the fittings manually connecting in



From standard 1U to 6U sizes to fully customized Non-standard enclosures.

### Best Practice Guide to Cable Ladder and Cable Tray Systems

Cable ladder systems and cable tray systems are designed for use as supports for cables and not as enclosures giving full mechanical protection. They are not intended to be used as ladders, walk ways

### How to install a cable tray and wire mesh tray to a wall

00:00 Cable tray Wall support YPK is used to attach cable ladders to walls from above. Cable trays are attached to wall support YPK with M6x30



### How To Use Cable Tray Architecture To Finish A Wall?

Wall-mounted installation involves attaching the cable tray to the walls using brackets, supports, or hangers, suitable for hanging from the ceiling.



### A Guide to Cable Tray Accessories and Their Functions

Cable Tray Accessories Types and Their Functions Cable tray accessories are crucial components that transform simple tray sections into a



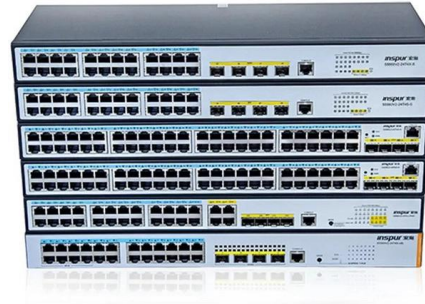
### Cable Tray / Ladder Tray INSTALLATION PowerTray

INSTRUCTIONS: Protect cable and wiring from damage or to power tray fitting using 1/4" hardware. Feed screws thru hole in cover, mark and drill thru top siderail flange of tray and a tach on other side with



## Vertical Cable Support Elbow , Ladder Trays , Cable Tray and Reels

The aluminum I-beam design of ITray is perfect for industrial installations with large diameter cables in long span situations, minimizing total tray width and creating a smooth transition between straight



### Cable Tray Technical Guide A practical guide to product selection and

In designing supports for a cable tray system, consideration should be given to the loads associated with future cable additions and any additional loading that may be applied to the cable tray system (e.g.,

### 5 Steps to Learn How to Install Cable Trays

Installing a cable tray system requires careful planning to ensure it can support the weight of the cables and adheres to electrical safety codes.



### How to install a cable tray and wire mesh tray to a wall

Cable trays are attached to wall support YPK with M6x30 screws and M6 nuts. 00:32 Wire mesh tray Joint WMT CL is used to attach wire mesh tray to the wall support YPK.



## Guide to cable support systems

Widths of 8 and 15 millimetres enable flexible adjustment to different cable trays, cable ladders and cable volumes. With the help of the matching SBV tightening strap locks and 576 spring chuck, the



### More products

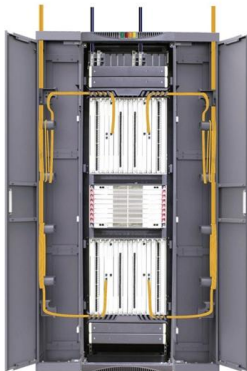


## Best Practice Guide to Cable Ladder and Cable Tray Systems

This publication is intended as a practical guide for the proper and safe\* installation of cable ladder systems, cable tray systems, channel support systems and associated supports.

## Cable Tray / Trough Tray INSTALLATION

Mounting Bracket Instructions: ) Use to mount Trough Tray to a wall or perpendicular surface. ) 3/8" Or 1/2" mounting hardware by others. ) Fasten tray to wall mounted strut support (hardware by others).



## Mastering Cable Tray Installation , Step-by-Step Guide for a Seamless

Mastering cable tray installation is crucial for creating a safe, organised, and efficient cable management system. By following this step-by-step guide, you can ensure a seamless setup that

## Guide to cable support systems



Universal systems for cable support structures are used for small loads. The systems are suspended from the ceiling with threaded rods, stand-off brackets allow raised floor mounting of cable trays,

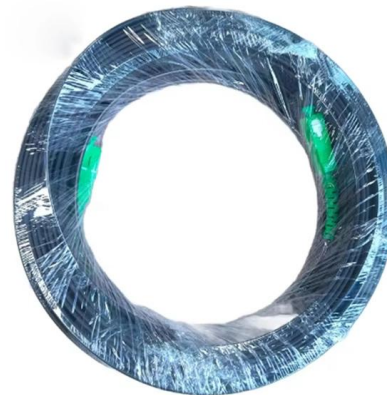


### **Cable Tray Technical Guide A practical guide to product selection and**

A practical guide to product selection and installation This guide for engineers and installers has been developed by ABB as a practical reference regarding cable tray characteristics, installation, and

### **Cable Tray / Ladder Tray INSTALLATION PowerTray**

General Installation Guidelines: For more information refer to the latest NEMA standards and local building codes. Trough tray field support and frequency depends on the weight and construction



### **Best Fixing and Mounting Options for Cable Trays , CMW**

Regarding cable management, the fixing and mounting you choose for your cable trays can make or break your setup. Whether you're managing voice, data, or electrical cables, ensuring



### How to install a cable tray to a wall?

Wall supports RVK are used for mounting 40 mm height KR-type cable trays to wall, mounting rails AS, ceiling supports HK1, HK2 and TP2 from the inner side of the

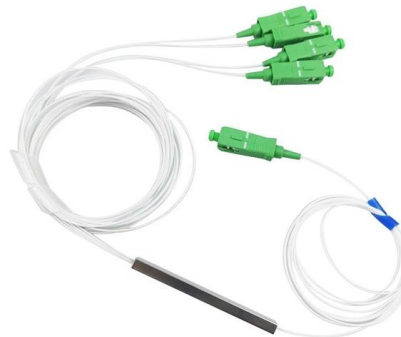


### Best practice guide to cable ladder and cable tray

Cable ladder and cable tray systems The following recommendations are intended to be a practical guide to ensure the safe and proper installation of

### How To Install Cable Tray On Wall: A Step-By-Step Guide

Learn how to install a cable tray on a wall with this comprehensive guide. Step-by-step instructions, tools needed, and safety tips included.



Motor protection controller



**CABLE TRAY INSTALLATION DETAILS WITH VERTICAL CABLE TRAY ELBOWS AT THE TOP OF RUNS SHOULD BE SUPPORTED AT THE JOINT ON EACH END. VERTICAL CABLE TRAY**



## How to mount a cable tray to a wall?

Wall support K is attached to joint RSS using the screw set included with the wall support. The distance between the cable tray and wall can be adjusted with a range of 0-40mm.



## How do I mount a cable tray to the wall and floor using an end bracket

The end of the cable tray is attached to the wall or the floor with two end brackets (RÄF). The end bracket is fixed to the shelf using the screw set included with the end bracket.

## Contact Us

---

For datasheets, pricing, or custom high-speed optical interconnect solutions, please visit:  
<https://www.syropy.com.pl>