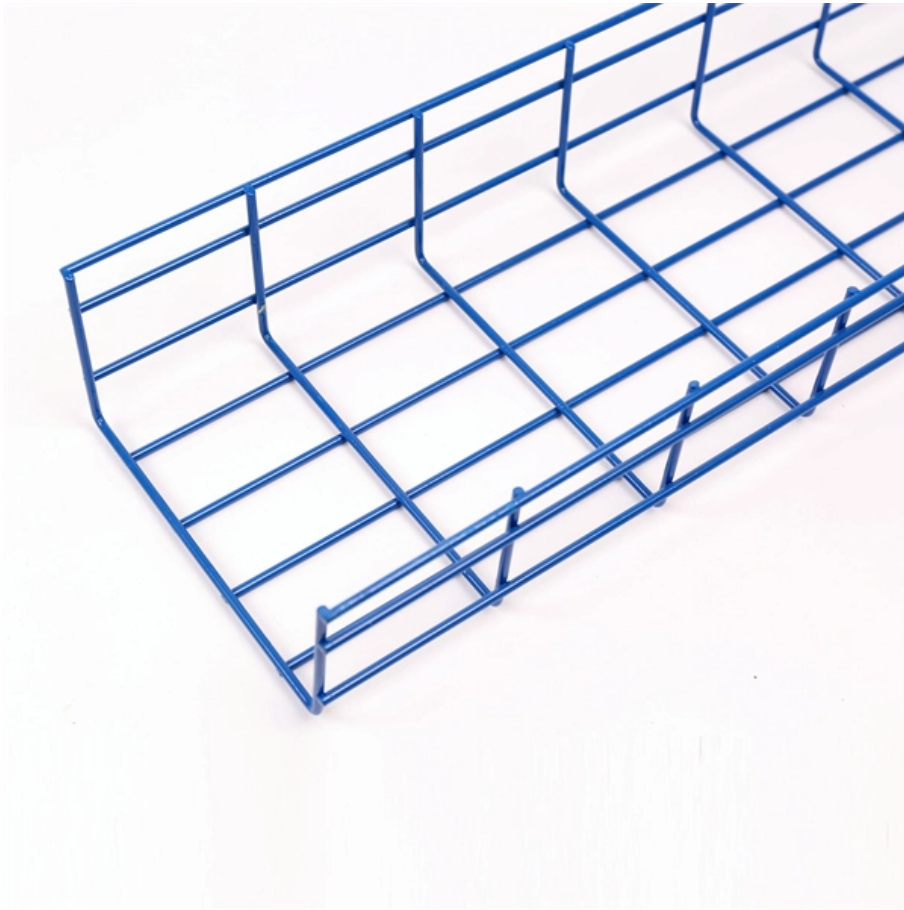


How to arrange the small busbar at the top of the cabinet





How to arrange the small busbar at the top of the cabinet



Rear-Mounted Horizontal Busbar Design for Low

Introduction In low voltage switchgear, busbars are not just conductors--they are the backbone of the entire power distribution system. Their

Electrical Busbars

Electrical busbars conduct high current within power systems. Learn about types, maintenance, failures, and how to extend their lifespan.



Busbar in Electrical System: Types, Applications,

If you notice any discrepancies in the busbar system, call for immediate maintenance. A faulty busbar connection can hamper consistent current flow and

ABCN Busbar Arrangement in Distribution Cabinets: A

This article explains the ABCN arrangement requirements based on electrical installation practices and Chinese national standards.



MPO-MPO Low Smoke Halogen Free Sheath

Multimode 10 Gigabit 12 pole OM4

Insertion loss < 0.35dB Return loss > 50dB

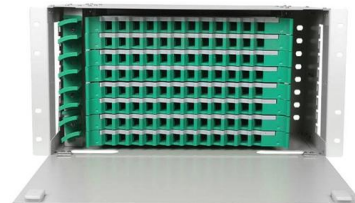
GRL Busbar System , Easy & Flexible Wiring for Cabinets

Say goodbye to complicated wiring! The GRL busbar system makes distribution cabinet installation fast, flexible, and neat.



Bus Bar : Different Types, Advantages & Disadvantages

The single type is used in small substations where the process of the continuous power supply is not required. An additional type is used in large substations to



Step-by-Step Busbar Installation Guide , Artizono

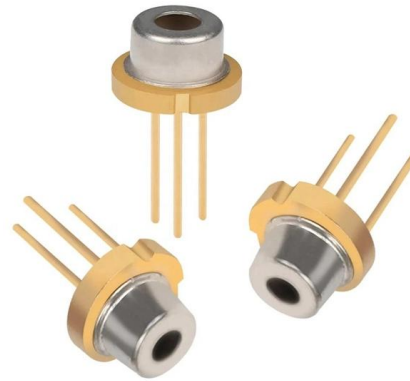
Determine the best location for the busbar within the panel to ensure efficient power distribution and easy access for future maintenance. Ensure there



Busbar Design Guide



Typical Busbar Sizes If this program recommends sizes that do not fit into the ranges below, change either the number of conductors or the section thickness of the busbar and recalculate the minimum



Busbars 101: A Comprehensive Guide

Busbars come in various forms, each suited to different applications depending on the power requirements and environmental conditions. Single-Busbar System: A basic setup with one busbar,

How to Install Bus Bars in Electrical Panels: A Step-by-Step Guide

Take you through the entire installation process, from understanding bus bars to choosing the right type, ensuring safety, step-by-step installation, and long-term maintenance.



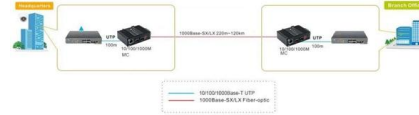
Busbar Processing & Installation: Your Ultimate Guide

These guidelines govern the busbar processing and installation procedures for all low-voltage switchgear and power distribution enclosures



Electrical Cabinet Design: Optimal Low Voltage Busbar

This comprehensive guide explores best practices for busbar insulator placement in electrical cabinet design, covering material selection, spacing

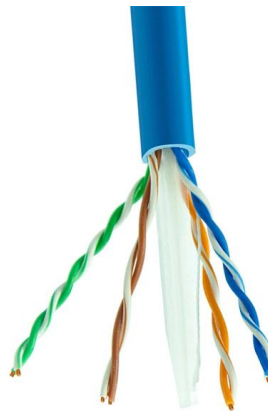


Busbar Processing & Installation: Your Ultimate Guide

Your ultimate guide to busbar processing and installation is here. From beginner to expert, we cover everything you need to know in this

Step-by-Step Busbar Installation Guide , Artizono

Imagine transforming a chaotic web of electrical connections into a streamlined, efficient powerhouse. Busbars are the unsung heroes of electrical



Design Guide for bus bars , Mersen

In this case, bus bar configuration might be low in profile, thereby changing the orientation of the bus structure and the airflow. Bus bars may also serve to



Electrical busbar system

Electrical busbar systems (sometimes simply referred to as busbar systems) are a modular approach to electrical wiring, where instead of a standard cable wiring to



IEC Standard For Busbar Clearance : Electrical

IEC Standard for Busbar Clearance The International Electrotechnical Commission (IEC) provides globally accepted guidelines for busbar clearances.

Electrical cabinet busbar

Electrical cabinet busbar, also known as electrical cabinet busbar, plays an extremely important role in the electrical system, such as the "heart" that



Switchboard Busbar Guide (2025): Design & Standards

Switchboard Busbar Last updated: August 2025
Busbars are the backbone of a low-voltage switchboard: rigid conductors that collect and



Cabinet infrastructure - Accessories for control cabinets

The Klippon® RailSnapper: Your key to simple and secure fastening of your top hat rail. The clever click mechanism offers you maximum security for top hat rail



[unsupervised_topic_modeling/topics/en/15/50/100/topics](#) at

Contribute to [annontopicmodel/unsupervised_topic_modeling](#) development by creating an account on GitHub.

Organizing a Panel Box

So if most of your cables enter at the top of a panel, it's most logical to start at the top of a ground bus bar and work down as you terminate individual wires. In this



[Switchboard Busbar Guide \(2025\): Design & Standards](#)

Learn how switchboard busbars are designed, sized, and verified to IEC/UL. Compare Cu vs Al, spacing, and testing. Download the RFQ checklist.



Busbar Installation Precautions Guide

Even if there are few limitations in the use of prefabricated busbar trunking, it is still important to check that its short circuit resistance characteristics are actually



How to Install and Process Busbars in Electrical Panels

Have you ever wondered how busbars, those critical components in electrical panels, are expertly installed and processed to ensure efficient power distribution? If you're an intermediate

Busbar Power Distribution Explained: Benefits, Types,

Discover the benefits, types, and applications of busbar power distribution systems. Learn why busbars offer efficient, safe, and space-saving



DATA ADJUSTABLE, EASY TO USE



SET INCREASE DECREASE POWER SWITCH

waifu-diffusion/tokenizer/vocab.json at main · jack-op11/waifu

Contribute to jack-op11/waifu-diffusion development by creating an account on GitHub.



ABCN Busbar Arrangement in Distribution Cabinets: A

ABCN Busbar Arrangement in Distribution Cabinets: A Core Principle of Electrical Safety
Inside every professionally built distribution cabinet, the neatly



Busbar Systems for Electrical Cabinets: The Modern

A busbar system for your electrical cabinet eliminates these problems by replacing the messy wiring with a clean, pre-fabricated modular solution. Here's why it's a

Busbar Systems for Electrical Cabinets: The Modern

With a busbar system, it's a simple plug-and-play process. You can easily add a new circuit breaker, a relay, or a surge protection device by simply adding a new



Contact Us

For datasheets, pricing, or custom high-speed optical interconnect solutions, please visit:
<https://www.syropy.com.pl>