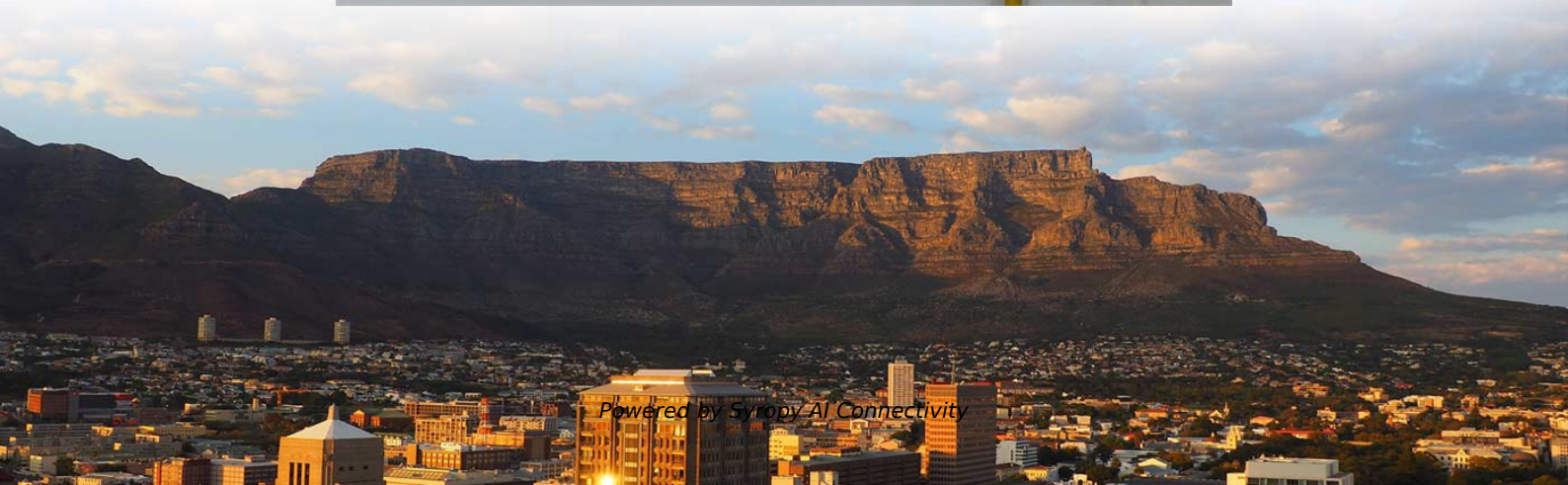
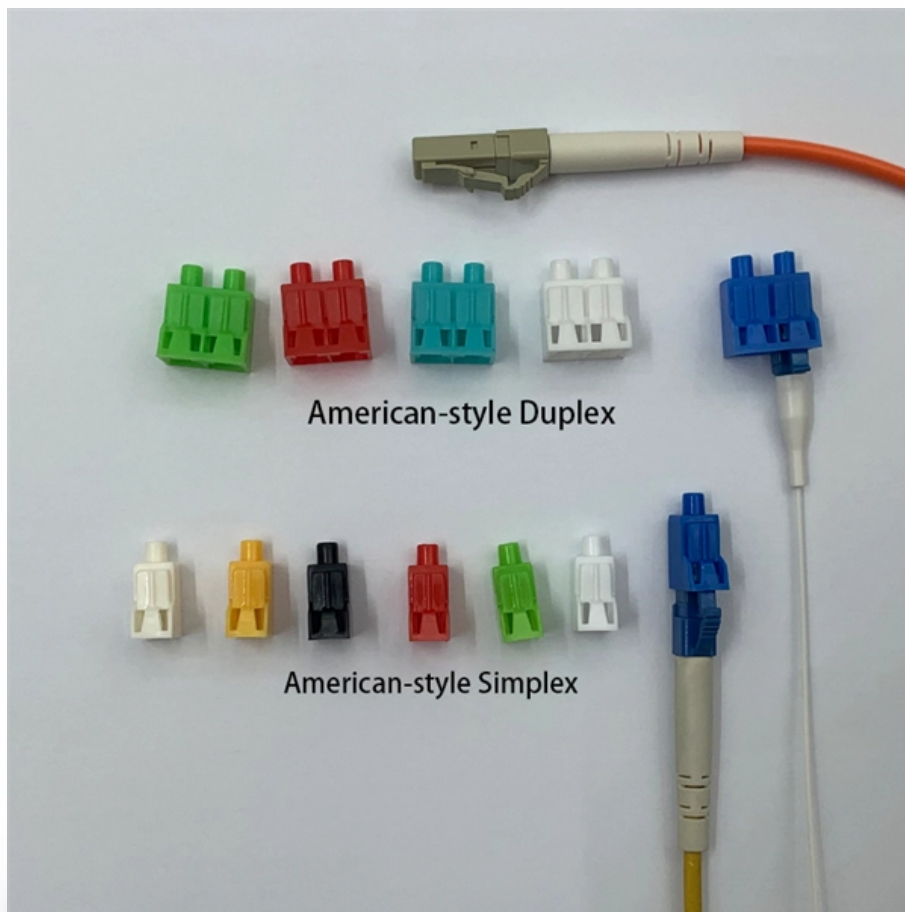


How to Choose the Model and Specifications for Cable Tray Installation





Overview

This comprehensive guide walks through the essential factors that determine proper cable tray sizing, explains how to interpret dimensional specifications, and provides practical insights into matching tray dimensions with specific installation requirements. Once completely installed, without damage either to conductors or structural system use maintain spacing or to keep cables in place when the tray is bent the minimum bend radius for cables as they exit the bottom of the cable tray. The mechanical and electrical characteristics, tests, certifications, overall quality management, recommendations mentioned. Before selecting a cable tray, consider the following key factors: Cable Type and Volume: Determine the number and type of cables to be supported. Environmental Conditions: Assess indoor or outdoor usage, exposure to moisture, chemicals, or extreme temperatures.



How to Choose the Model and Specifications for Cable Tray Installation

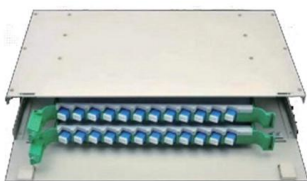


Cable Tray Systems: Requirements and Best Practices

13. Final Summary and Good Practice Notes
Cable tray systems offer a flexible and efficient solution for supporting large numbers of cables in modern electrical installations. When

Best practice guide to cable ladder and cable tray

Cable ladder and cable tray systems The following recommendations are intended to be a practical guide to ensure the safe and proper installation of



Cable Tray Installation

Learn everything about cable tray installation with our complete guide. Discover types, steps, and safety tips for efficient electrical cable management.

GUIDE CABLE TRAYS TECHNICAL

If it has excellent electrical continuity and is integrated in the installation's equipotential bonding system, a metal cable tray reduces the coupling's impact and thus contributes to good EMC of the electrical



Cable Tray Size Guide: How to Choose the Right Dimensions

Selecting the right cable tray size is critical for electrical safety, system efficiency, and cost control. This comprehensive guide covers standard cable tray sizes, calculation methods, and practical selection

CABLE TRAY SYSTEMS GUIDE

Some applications may require the cable tray to support the weight of a single, dead object in addition to the cable loads. Specifications typically require this to be applied at the midpoint of the span between



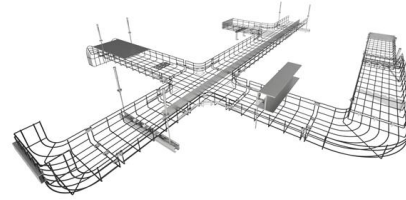
The Ultimate Guide to Selecting the Right Cable Tray for Your Project

In the intricate world of modern infrastructure and electrical systems, selecting the right cable management solution is pivotal to the success of any project. Cable trays, with their ability to



A Guide to Installing and Supporting Electrical Cable Trays

This guide covers the critical steps, from selecting the right electrical cable tray and performing accurate cable fill calculations to managing a safe cable pull through



Best Practices for Installing Cables in Trays

Conclusion Proper installation of cables in trays requires more than just laying cables. It requires: correct inspection and

The Ultimate Guide to Selecting the Right Cable Tray for

Installation Plan: Plan the installation method and consider any additional accessories or supports required for the cable tray system. In Conclusion



Cable Tray Technical Guide A practical guide to product selection and

A practical guide to product selection and installation This guide for engineers and installers has been developed by ABB as a practical reference regarding cable tray characteristics, installation, and



Cable Tray Size Chart and Selection Guide

Selecting the appropriate electrical cable tray dimensions is a critical decision that directly impacts the safety, efficiency, and longevity of any industrial or commercial electrical installation.

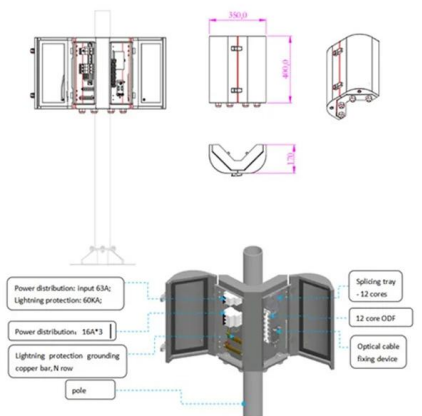


Complete cable tray manual for electrical engineers and

Complete cable tray manual for electrical engineers and designers (on photo: power cable management ladder tray systems assembled aluminum cable tray ladder

Cable Tray Dimensions and Specifications as per NEC

Many electrical systems employ cable trays. They route cables safely & efficiently. NEC defines minimum cable tray size & electrical installation



Ultimate Guide to Choosing the Best Cable Tray

As cable tray manufacturers with extensive industry experience, we've created this ultimate guide to help you navigate the process of choosing the best



A Guide to Installing and Supporting Electrical Cable Trays

A professional guide to installing electrical cable tray systems per NEC Article 392. Covers support, securing cables, and fill calculations.



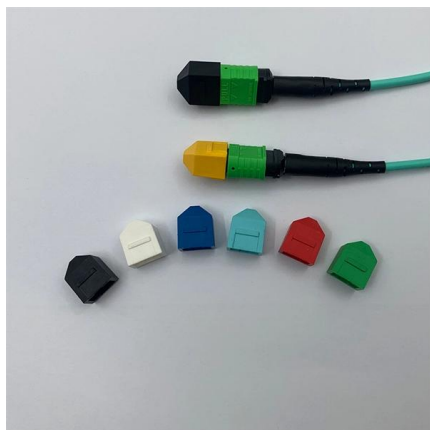
How to Choose Cable Trays

Learn how to choose cable Trays with our ultimate guide. Learn about load calculation, materials, design, types, installation, and more to make the right



How to Select the Right Electric Cable Tray for Your Application

In this article, we go through the essential factors to consider when selecting the right electric cable tray for your application.



How to Install Cable Tray: A Comprehensive Guide to Different Cable

Welcome to our step-by-step guide on installing cable trays! In this video, we'll explore the different types of cable trays available and provide detailed instructions for their installation.



Cable Tray Technical Guide A practical guide to product selection and

Cable tray length is selected based on the load to be supported, the distance between the supports (also referred to as the span), and handling and installation constraints.

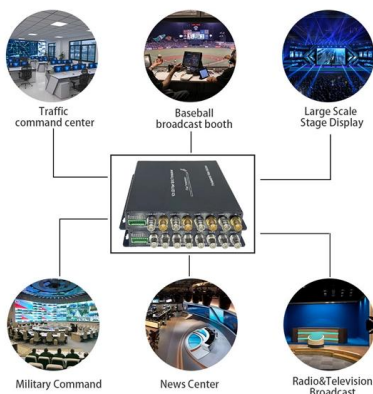


Ultimate Guide to Cable Tray Selection - Types,

Learn how to choose the best cable tray system for your needs. Explore types, materials, installation tips, and NEC compliance in this expert guide.

How to Choose the Right Cable Tray for Efficient Cable

Learn how to choose the right cable tray for electrical installations. Explore different designs, materials, and fastening methods to ensure optimal



Mastering Cable Tray Installation , Step-by-Step Guide for a Seamless

Learn how to install cable trays correctly. Get the ultimate step-by-step guide on setting up a seamless and reliable cable management system.



Best Practice Guide to Cable Ladder and Cable Tray Systems

These guidelines will be particularly useful for the design, specification, procurement, installation and maintenance of these systems. Cable ladder systems and cable tray systems are designed for use



Contact Us

For datasheets, pricing, or custom high-speed optical interconnect solutions, please visit:
<https://www.syropy.com.pl>