

How thick should the cable tray wall be





How thick should the cable tray wall be



Cable Tray Spacing Standards for Installation and Safety

The Importance of Cable Tray Spacing in Electrical Infrastructure Cable tray spacing is a critical aspect of electrical infrastructure, influencing both

Cable Tray Systems: Requirements and Best Practices

Comprehensive guide to cable tray systems requirements: tray types, materials, loading, supports, bonding, routing, and best practices for safe electrical cable management.



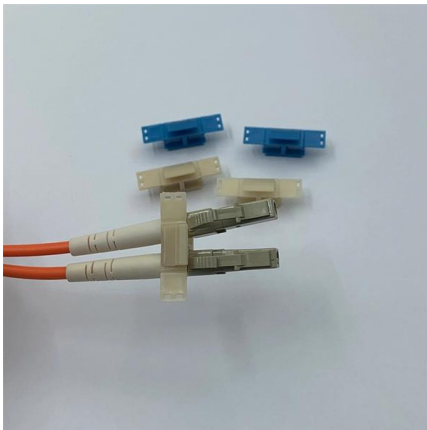
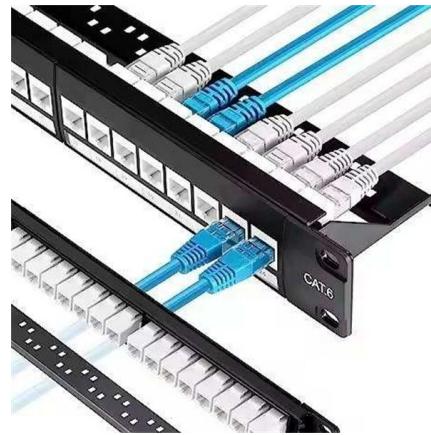
CABLE TRAY SYSTEMS GUIDE

Steel Ladder System Hubbell's NEXTFRAME® Ladder Tray is the effective and widely used cable runway that supports and delivers bundles of cable between cabinets, racks, and closets, along



Cable Tray Technical Guide A practical guide to product selection and

SOLID-BOTTOM CABLE TRAY Providing additional cable protection, solid-bottom cable tray is sometimes preferred to support and protect numerous small instrumentation and control cables.



Cable Tray Sizing

Learn cable tray sizing with accurate width and dimension calculations. Avoid common mistakes for efficient cable management. Read our expert guide now!

Cable Tray Size and Dimensions: How to Choose the

Learn how to calculate the perfect cable tray size and dimensions for your electrical project. This guide covers load capacity, fill ratios, and industry



A Guide to Installing and Supporting Electrical Cable Trays

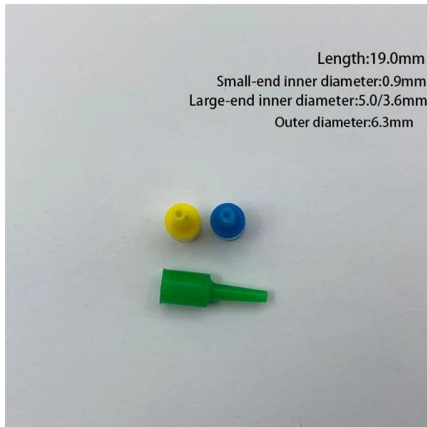
A professional guide to installing electrical cable tray systems per NEC Article 392. Covers support, securing cables, and fill calculations.





A Complete Guide to Cable Trays Sizes and Selection

Explore our complete guide to cable trays sizes. Learn how to calculate loads, select types, and navigate UK standards for a certified network installation.



Cable Tray Installation

Learn everything about cable tray installation with our complete guide. Discover types, steps, and safety tips for efficient electrical cable management.

Ultimate Guide to Cable Tray Selection - Types,

Learn how to choose the best cable tray system for your needs. Explore types, materials, installation tips, and NEC compliance in this expert guide.



Cable Tray Width, Dimensions and Specifications as per

Learn about cable tray width dimensions and specifications as per NEC standards. Understand types, sizes, materials, and installation guidelines for safe and

Precautions for Cable Tray Installation



Cable Tray Installation Guide The correct installation of cable trays is crucial for establishing a reliable and efficient cable system. It ensures that cables are

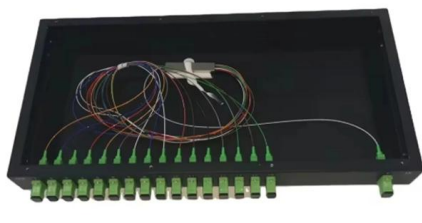
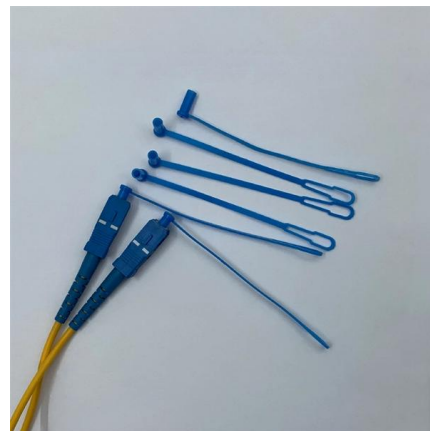


Cable Tray Dimensions Guide: Standard Sizes, Tray

Explore standard sizes by tray type, understand width and depth limits, and see how to calculate and choose compliant cable tray sizes for real projects.

B-Line series Cable Tray Design Considerations

For ladder or ventilated trough trays, the total sum of the cross-sectional areas of all the cables to be installed in the cable tray must be equal to or less than the allowable cable area for the tray width, as



How To Install Cable Tray On Wall: A Step-By-Step Guide

Learn how to install a cable tray on a wall with this comprehensive guide. Step-by-step instructions, tools needed, and safety tips included.



Proper Cable Tray Sizing for Efficient Installations

Proper cable tray sizing is critical for the efficient and safe management of electrical wiring in industrial, commercial, and residential



Complete cable tray manual for electrical engineers and

Complete cable tray manual for electrical engineers and designers (on photo: power cable management ladder tray systems assembled aluminum cable tray ladder

Cable Tray Design, Layout, and Overall Wiring Planning

Learn about effective Cable Tray Design and Layout for electrical systems. Our guide covers planning, material choice, safety, and maintenance.



Cable Tray Technical Guide A practical guide to product selection and

The choice of method should be discussed with a local inspector. The best decision may be to extend only the cables, creating a discontinuity in the cable tray.



Best Practice Guide to Cable Ladder and Cable Tray Systems

Cable ladder systems and cable tray systems are designed for use as supports for cables and not as enclosures giving full mechanical protection. They are not intended to be used as ladders, walk ways



IEC Standard for Cable Tray: Complete Technical Guide

When cable trays are used as part of an earthing path, they must meet specific resistance limits. IEC 61537 mandates that trays used for bonding or

Master Cable Tray Installation: A Professional Step-by

Learn how to install cable trays for large-scale projects with our professional, step-by-step guide covering industry standards, safety protocols,



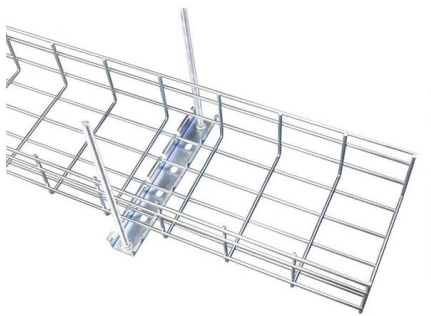
Cable Tray Installation and Maintenance Considerations

Learn about effective Cable Tray Installation and Maintenance. Get practical tips for planning, fitting, and looking after your cable trays.

What is the national standard thickness of cable tray and the



The national standard of cable tray requires that the central distance between the rung of cable tray should not be greater than 300mm, and the width of the rung itself should not be less than 30mm.

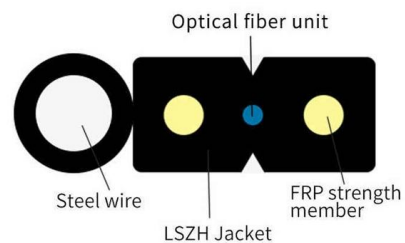


Cable Tray Guide: Picking the Best Thickness and Width Options

However, selecting the correct thickness and width of a cable tray is essential to maximize performance, avoid safety hazards, and minimize costs. This article explains the key

GUIDE CABLE TRAYS TECHNICAL

NEMA VE 1-2017 Specifies requirements for metal cable trays and associated fittings designed for use in accordance with the rules of Canadian Electrical Code, Part I and the National Electrical Code®



Cable Tray Size Calculation for Project Engineers

Cable tray thickness should be selected based on the total cable load, tray width, support span, and material strength. Heavier cable runs require thicker



Cable Tray Guide: Picking the Best Thickness and Width Options

Cable trays are among the most reliable solutions for routing and supporting cables in industrial plants, commercial facilities, and residential projects. However, selecting the correct



Contact Us

For datasheets, pricing, or custom high-speed optical interconnect solutions, please visit:
<https://www.syropy.com.pl>