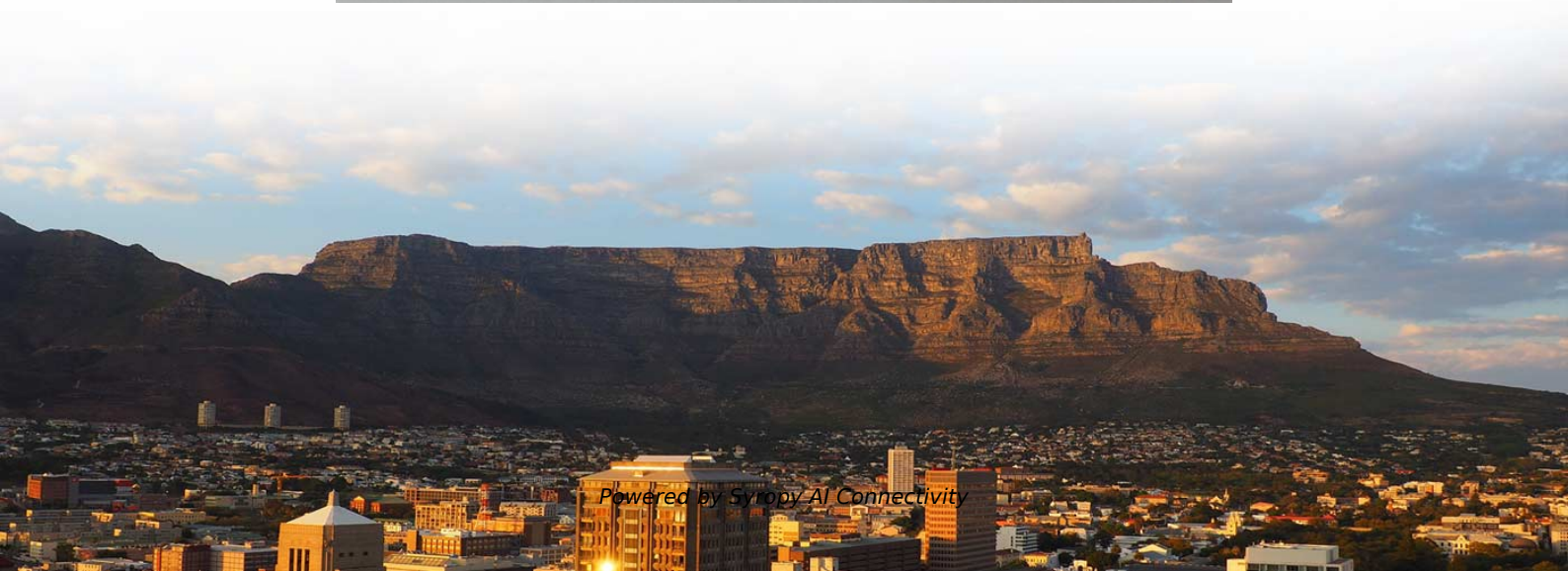


How much loss does a 2 8 beam splitter have





Overview

When both gains are equal, the loss is 0 dB, so there is no loss (doesn't happen obviously). Why WDM - EDFA is known as futuristic product?

?

Which is the right patch cord for EPON/GPON ONU?

Sc/APC or Sc/PC?

Do you know what is the essential optical input level of a CATV. Excess loss is the ratio of the optical power launched at the input port of the splitter to the total optical power measured from all output ports. A beam splitter (or beamsplitter, power splitter) is an optical device which can split an incident light beam (e. a laser beam) into two (or sometimes more) beams, which may or may not have the same optical power (radiant flux). Beamsplitters are often classified according to their construction: cube or plate.



How much loss does a 2 8 beam splitter have

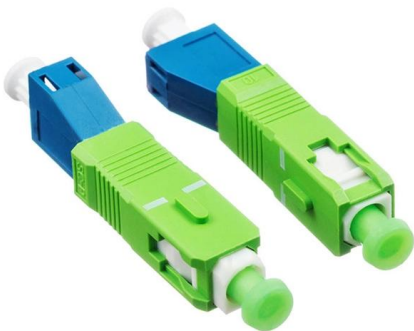


Beam Splitters - optical power splitter, beamsplitter, thin

Beam splitters are devices for splitting a laser beam into two or more beams. There are different types, including polarizing and non-polarizing versions.

What are Beamsplitters?

Beamsplitters are optical components used to split incident light at a designated ratio into two separate beams. Additionally, beamsplitters can be used in reverse to



How to Calculate Splitter Loss in Optical Fiber

Calculating splitter loss in optical fibers is essential for designing efficient optical networks. Understanding the types of splitters, their impact on network performance, and how to measure their

Optical Splitter Loss Calculator

Estimate optical splitter losses for fiber building projects fast. Include connectors, splices, excess loss, and margin safety. Export results to reports for clean client handoffs.



Repo Cars for Sale Near Me , Buy Bank Repo Cars Direct

Find repo cars for sale near you from banks and credit unions. No dealer fees, no middleman. Browse bank repo cars, trucks, and SUVs today.



Beam Splitters - optical power splitter, beamsplitter, thin

The optical losses vary significantly between different types of devices. For example, beam splitters with metallic coatings exhibit relatively high losses, whereas



Latest Energy Stock Investing Analysis , Seeking Alpha

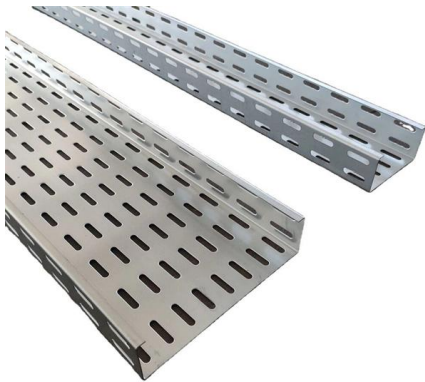
Seeking Alpha's latest contributor opinion and analysis of the energy sector. Click to discover energy stock ideas, strategies, and analysis.





Is it true? 96% of the signal is lost with an 8-way splitter?

A loss of 3dB means you've lost 50% of the signal but because it's signal not current, you don't care a lot. Losing 14dB is a lot but it's not tragic. You



PON crib: splitters, ratios, gains, losses

Here's a table of estimated splitter attenuation characteristics. It should be noted that this table is applicable for fused optical splitters (FBP) and of course



Hardware Archives , TechRepublic

Stay current with the components, peripherals and physical parts that constitute your IT department.



Why Fiber Optic Splitter Loss Table Is So Important?

Do you know how to realize the performance of the FBT and PLC splitter? The primary important thing is to check its fiber optic splitter loss table.



How to Calculate Splitter Loss in Optical Fiber

Calculating splitter loss in optical fibers is essential for designing efficient optical networks. Understanding the types of splitters, their impact on



How Does a Beam Splitter Work?

Discover how beam splitters precisely divide light, exploring their fundamental optical principles, diverse designs, crucial performance aspects, and wide-ranging real-world applications.

Understanding Optical Splitter Loss

Understanding splitter ratios and insertion loss is fundamental to building a reliable fibre optic network. The key takeaway is that every split

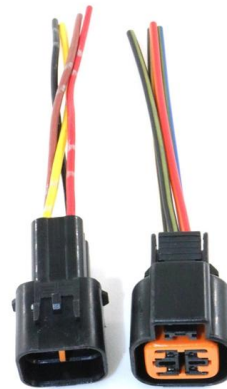
LoRawan outdoor base station



How to Select a Beamsplitter

How to Select a Beamsplitter Beamsplitters are used in laser systems, optical interferometry, fluorescence, and biomedical instrumentation. They come in three basic forms: plate, pellicle, and

Hier sollte eine Beschreibung angezeigt werden, diese Seite lässt dies jedoch nicht zu.



Network Cabinet & Rack

What are Beamsplitters?

Optical components that create two beams by splitting incident light are beamsplitters. Read more about the different types of beamsplitters at Edmund

Understanding Optical Splitter Loss

Understanding Optical Splitter Loss - What Insertion Loss Really Means Insertion loss tells you how much weaker the signal becomes after



Why Fiber Optic Splitter Loss Table Is So Important?

Excess loss is the ratio of the optical power launched at the input port of the splitter to the total optical power measured from all output ports. It assures



Splitter Ratios: 1:8 vs 1:16 vs 1:32

Splitter ratios affect insertion loss and serviceability. Common ratios: For cascades, add losses and validate margin using the Optical Budget tool.

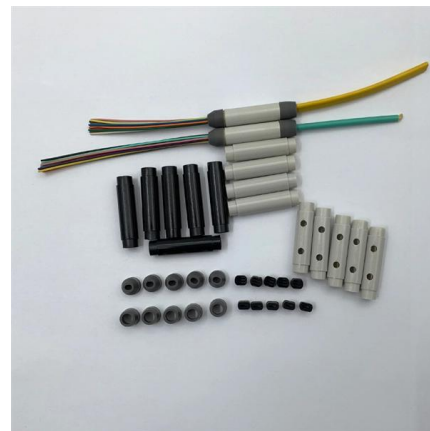


Basic Knowledge about Split Ratio and Insertion Loss of

Excess loss is the ratio of the optical power launched at the input port of the splitter to the total optical power measured from all output ports. It assures

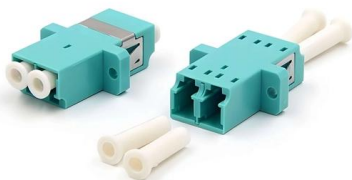
PLC Splitter and download the loss chart of PLC splitter

It is an optical fiber tandem device with many input and output terminals, especially applicable to a passive optical network (EPON, GPON,



Splitter Ratios: 1:8 vs 1:16 vs 1:32

Splitter ratios affect insertion loss and serviceability. Common ratios: For cascades, add losses and validate margin using the Optical Budget tool. Compare typical losses and use-cases;





How to Calculate Splitter Loss in Optical Fiber

Splitter loss refers to the optical power lost when a signal is divided into multiple channels. This loss is primarily quantified as insertion loss, which



Transmission and Reflection by Beamsplitters

Transmission and Reflection by Beamsplitters - Java Tutorial A beamsplitter is a common optical component that partially transmits and partially reflects an

What is typical optical loss for 1x8 splitter? » Career Flyes

Nope! A typical 1x8 splitter loss of 10.5 dB is common and accepted in fiber networks. Engineers plan for it when designing a system. As long as



Contact Us

For datasheets, pricing, or custom high-speed optical interconnect solutions, please visit:
<https://www.syropy.com.pl>