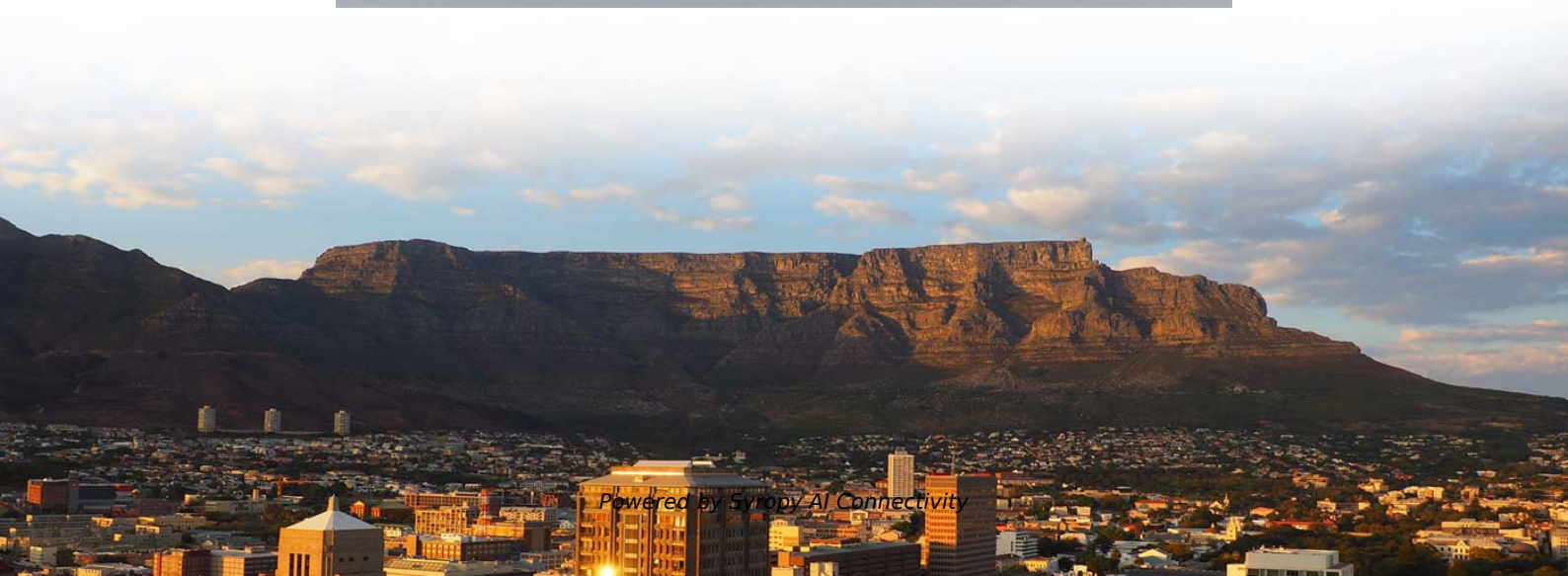
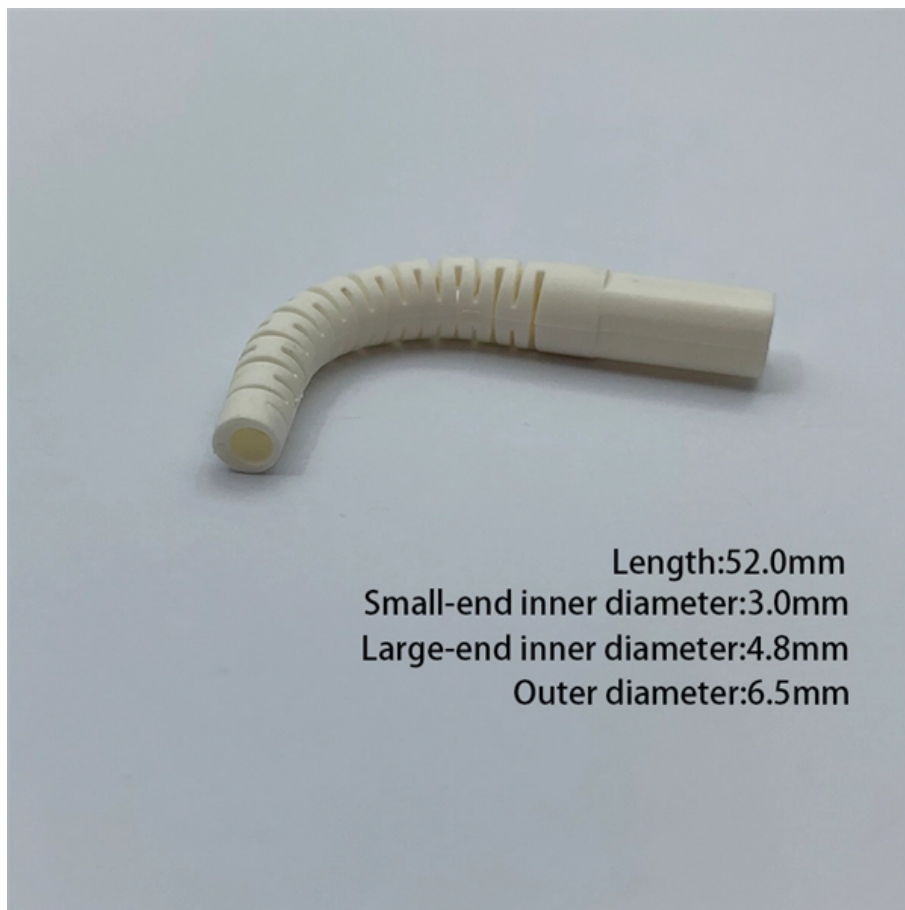


How much load can the primary distribution box withstand





Overview

Radial operation is the most widespread and most economic design of both MV and LV networks. It provides a sufficiently high degree of reliability and service continuity for most customers.



How much load can the primary distribution box withstand

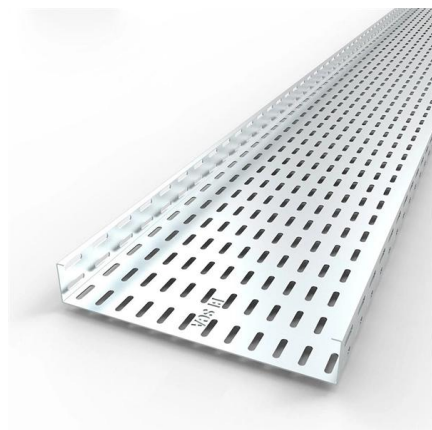
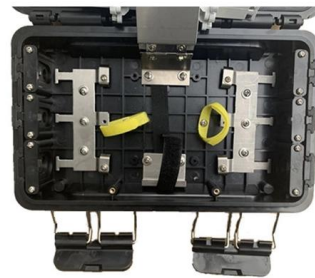


How to choose a distribution box?

Determine the load demand of the electrical system, including current loads and future expansion plans. This will determine the required distribution box

Distribution Box: Comprehensive Guide on Types, Safety & Technology

Explore the essential functions, types, safety features, and technological advances of distribution boxes for efficient electrical power distribution.

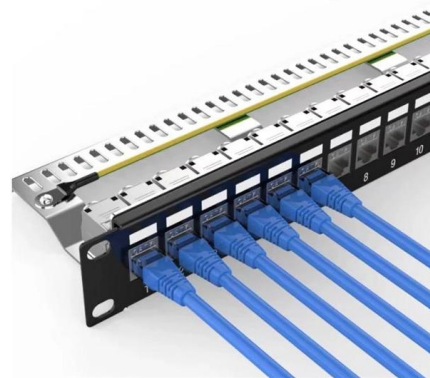


Explore Power Distribution Box Types and Functions

Power distribution boxes are used in commercial and residential buildings and are part of the electrical system, also known as switchboards.

How to choose a distribution box of the right size for a project based

If you're like most electrical professionals, picking the right distribution box for your project can feel like navigating a maze. I've been in those shoes - staring at spec sheets, worrying about



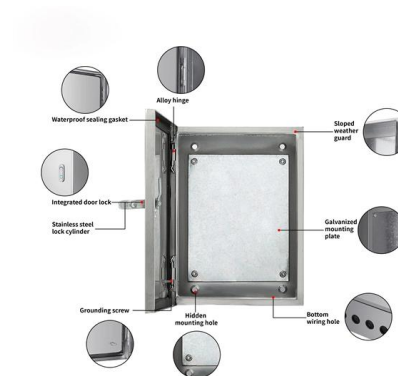
Distribution Box: Types and Functions , Axis-Electricals

A distribution box ensures that electrical supply is distributed in the building, also known as a distribution board, panel board, breaker panel, or electric panel.



Choosing a suitable distribution box and what should be noted

Before picking a distribution box, you must know your total load. The total load is how much electricity your building uses at once. If the box is too small, it can get too hot or shut off a lot. If the box is too



The Ultimate Guide to Distribution Box Types

Discover the key types of distribution boxes with NUOMAK's comprehensive guide. Learn about Main Distribution Boards (MDB), Consumer Units, Transfer



Distribution Board Design: Standards,



Surge Protection

Early planning of a distribution board's layout and component selection is essential for long-term system performance. Considering power

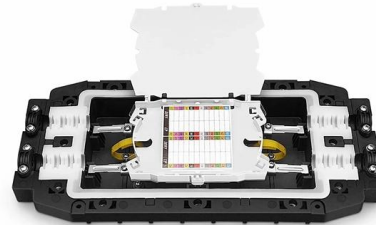


What Is an Electrical Distribution Box? A Complete Guide

An electrical distribution box routes power, prevents overloads, and keeps wiring organised--essential for safe, efficient home and industrial setups!

Distribution Boxes Types - The Complete Guide

Types of Distribution Boxes The electrical power distribution boxes are distribution boards or breaker panels. Meanwhile, it supplies current and can



Power Distribution Boxes Explained Simply

Discover the essentials of a Power Distribution Box--how it works, key types, benefits, and tips to ensure safe, efficient electrical power management.



Distribution Boxes: Types and Functions

A distribution boxes acts as the load center and main distributor of electrical power within a building. Also called a distribution board, panel board,



How to Choose a House Distribution Box , CHINT global

Safety Considerations Safety is the top priority when choosing a distribution box. The distribution box must be able to handle the electrical load



The Complete Guide to Distribution Box: Installation, Types & More

Begin by determining the electrical load requirements and selecting an appropriately sized distribution box. Calculate the total current demand of all circuits and choose a box with adequate



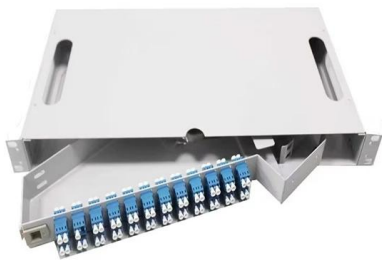
cs-178-project/imdb.vocab at main · apmalani/cs-178-project

Contribute to apmalani/cs-178-project development by creating an account on GitHub.



DB BOX(Electrical Distribution Box): Everything You

Learn everything you need to know about the Electrical Distribution Box (DB Box). Explore types, materials, installation tips, etc.



Calculate Size of Main ELCB & Branch MCB of Distribution Box

Design Distribution Box of one House and Calculation of Size of Main ELCB and branch Circuit MCB as following Load Detail. Power Supply is 430V (P-P), 230 (P-N), 50Hz. Consider

Power Distribution Boxes Explained Simply

Bus bars and internal wiring help distribute electricity to each connected circuit efficiently. The box keeps everything safe by balancing the load,



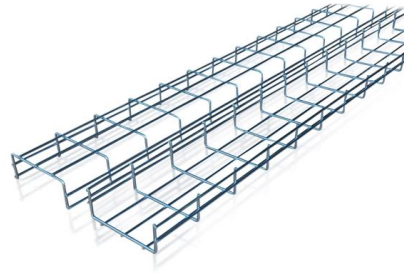
Distribution Box and Selection Guide

Selecting the right distribution box is crucial for ensuring the safety, efficiency, and reliability of your electrical system. By considering factors such as



How to Choose a House Distribution Box , CHINT global

A well-chosen distribution box ensures the safety and efficiency of your household electrical system. This article guides you through selecting a

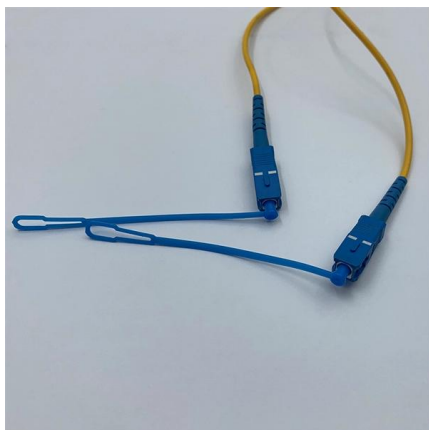


How to Calculate the Size and Number of Circuits for a Distribution

But with some simple math and planning (don't worry, we'll walk through it!), you can design a system that works smoothly even when you're running all the gadgets.

The Meaning and Function of Primary, Secondary, and Tertiary

Follows the principle of "one machine, one switch, one RCD, one box, one lock," ensuring no single switch controls multiple devices. This explanation aims to clarify the roles and functions of



What Is a Distribution Box?

Synthetic rubber is an excellent choice. When made of synthetic rubber, distribution boxes can withstand regular use without damaging or



Technical Application Papers No.11 Guidelines to the construction

In each test, the incoming circuit and the busbars are lo-aded to their rated current and as many outgoing circuits in a group are loaded to their rated current as necessary to distribute the incoming



Understanding Distribution Boxes: A Comprehensive Guide

The right distribution box depends on the installation environment, protection level, load requirements, and application type. By understanding the

DB BOX(Electrical Distribution Box): Everything You

Consider where the DB Box will be installed:
Outdoor Installations: Choose a weather-resistant and corrosion-resistant box that can withstand rain,



Size determination, installation method and wiring mode

The distribution box is the central hub of the home circuit and the general control of our daily power consumption. It is an indispensable electrical equipment. If there



Contact Us

For datasheets, pricing, or custom high-speed optical interconnect solutions,
please visit:

<https://www.syropy.com.pl>