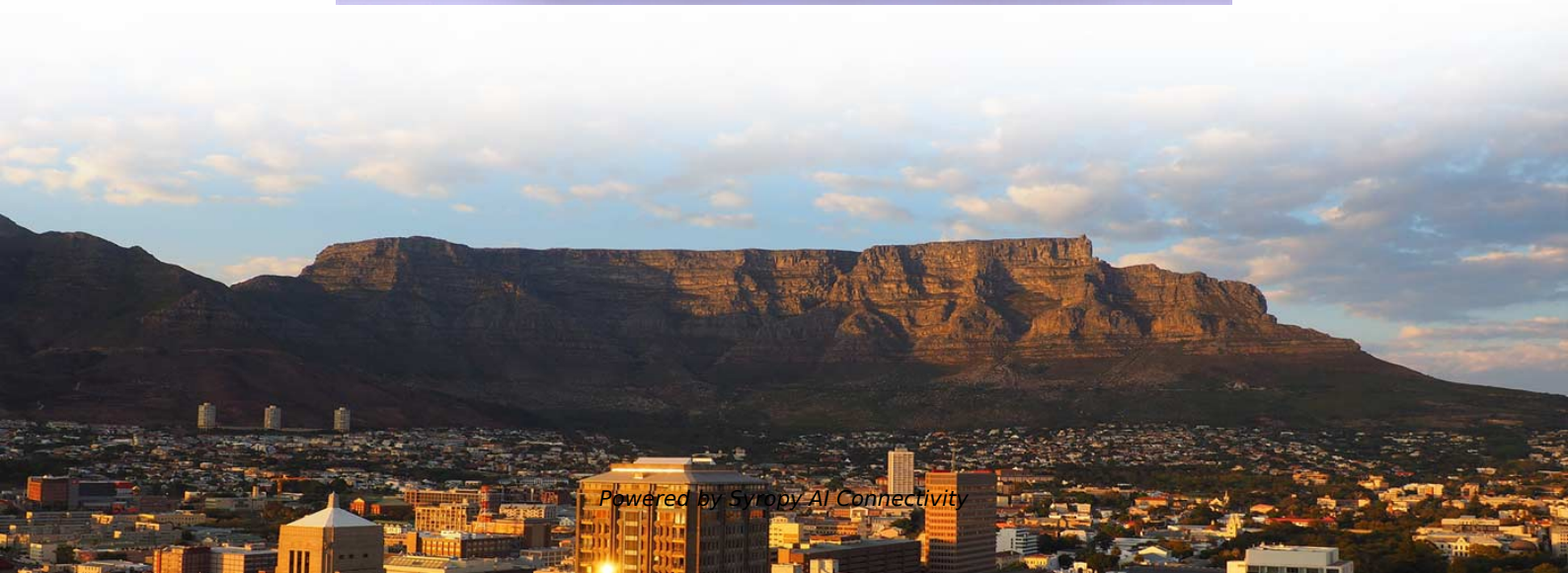


How much fixed distance should the mesh cable tray be





Overview

Multiple tiers of wire mesh cable tray should be installed with a minimum clearance of 12" in between the trays. This spacing is crucial for adequate maintenance access, ease of inspection, and ensuring proper airflow for effective heat dissipation. Fittings can, on the one hand, be used for horizontal or vertical changing of the routing direction or, on the other, to change the height or width of the. Although BS 7671 touches on the subject of cable supports, it does not detail specifically what these support distances should be. 8 (Other Mechanical Stresses (AJ)) in that document provides requirements for cable support.



How much fixed distance should the mesh cable tray be

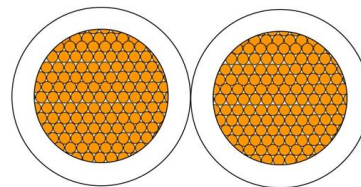


WIRE MESH TRAY TECHNICAL GUIDE

This depends on the type of data cable, the number of power cables and the type of cable tray. Otherwise, the distance of 8" provides a simple and sensible rule of thumb.

Choosing the right wire basket tray White Paper

Solution: Eaton's B-Line series Flextray wire basket tray and splices out preforms many other mesh trays, helping ensure the integrity and quality of cable pathways.



Wire Mesh Cable Trays Technical Information Detailed,

Wire Mesh Cable Tray Detailed Information: a. A job site, field adaptable support system primarily for low voltage telecommunication and fiber optic cables. These

Cable Tray Spacing Standards for Installation and Safety

When installing two cable trays in parallel at the same height, the distance between them should be no less than 0.6 meters. This spacing is crucial for adequate maintenance access, ease of



Cable Tray SHIB NAL

Cable trays are not raceways, but they are treated as a structural component of a facility's electrical system. Cable trays are a part of a planned cable management system to support, route, protect and



How to Install a Wire Mesh Basket or Cable Tray , CMW

Space your supports about every 1.5-2m (depending on the tray type and weight). For suspended trays, use threaded rods and ceiling anchors. For wall-mounted trays, use strong



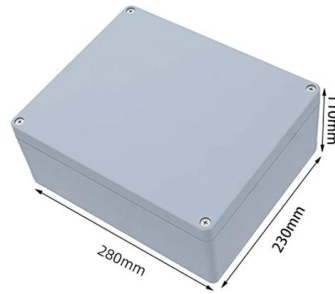
Cable Tray Systems: Requirements and Best Practices

Comprehensive guide to cable tray systems requirements: tray types, materials, loading, supports, bonding, routing, and best practices for safe electrical cable management.



Cable Support Distances

The cable should not be allowed to have a straight vertical run without the addition of a tension relieving section. This normally involves the cable having a short horizontal section (at least 1 metre) included



Best Practice Guide to Cable Ladder and Cable Tray Systems

Cable ladders and cable trays should be mounted far enough off the floor or roof to allow the cables to exit through the bottom of the cable ladder or cable tray.

GENERAL INFORMATION

As demonstrated in the previous paragraph, Optical Cable Corporation's cable can be installed in vertical rises for great distances. However, due to the practical nature of installing cable, the weight



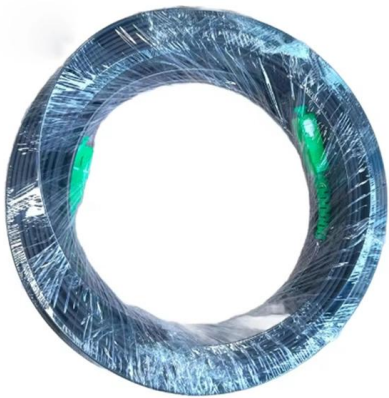
Technical Requirements for Wire Mesh Cable Trays

Wire mesh cable tray technical requirements are crucial for the success of cable management and wiring systems. Our wire mesh cable trays undergo strict quality control and testing to ensure their



Cable Tray Sizing

Learn cable tray sizing with accurate width and dimension calculations. Avoid common mistakes for efficient cable management. Read our expert guide now!



Cable Trays and Reels - How often should I support Cablofil wire mesh tray?

Wire mesh cable trays are typically supported on 5-8' spans. The support span should be determined from the cable load to be installed in the tray. A quick reference load table indicating the lbs/ft

GENERAL INFORMATION

The distance between the intermediate points is largely based upon the installation and environmental conditions such as the number of fixed access points along the shaft, access to the fixed access



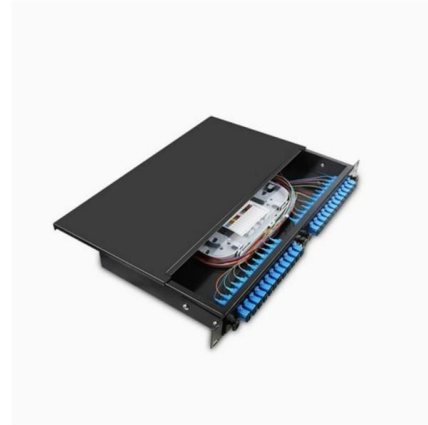
Installation Of Cable In Cable Trays: NEC, Safety

Installation of Cable in Cable Trays ensures proper routing, cable management, NEC compliance, grounding, fire safety, and load capacity.



Cable Tray Technical Guide A practical guide to product selection and

Cable tray length is selected based on the load to be supported, the distance between the supports (also referred to as the span), and handling and installation constraints.

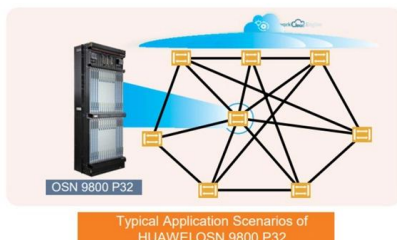
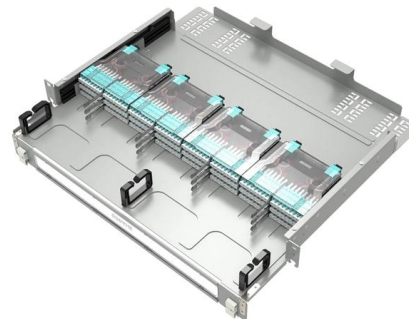


Best Practices for Installing Cables in Trays

Quick Installation Checklist (Key Steps) Cable tray cable installation generally follows these steps: Inspect cables before

Best practice guide to cable ladder and cable tray

Cable ladder and cable tray systems The following recommendations are intended to be a practical guide to ensure the safe and proper installation of



Section 27 05 36 Cable Tray for Communications Systems

Multiple tiers of wire mesh cable tray should be installed with a minimum clearance of 12" in between the trays. When located above an acoustical drop ceiling, wire mesh cable tray should be installed a



Cable Tray Questions , Cable Tray Institute

Multiconductor cables rated over 600 volts shall be separated from lower voltage cables by a separate cable tray or a solid fixed barrier. Type MC cables can be mixed with lower voltage cables. See NEC



TECHNICAL GUIDE

The tests reveal that the wire cable tray shows no permanent deformation, its mesh structure is able to absorb the physical stress generated by a significant short-circuit current.

Electrical Continuity

For power cables, metal cable trays must be connected to the earthing (grounding) network every 15 meters. For data cables, it is suggested every distance



Cable Tray Support Spacing: Key Guidelines Explained

Explore the essential cable tray support spacing requirements for safe and efficient installations. Learn NEC guidelines for perforated, ladder, and wire mesh trays.



Guide to cable support systems

The mesh cable trays are suitable for the installation of power cables and cables in various areas of application. The grid spacings mean that cables can be inserted and run out in various directions.



Wire Mesh Cable Tray Installation: A Comprehensive

Installing wire mesh cable trays is a straightforward process when done correctly. By following this guide, you can ensure a safe, efficient, and durable

Perfect Wire Mesh Cable Tray Systems Design for Your

Unlock the secrets to flawless wire mesh cable tray systems designs, cable tray sizing and routing, electrical, installation guidelines for seamless



Cable Tray Ladder Trunking Wire Basket Installation

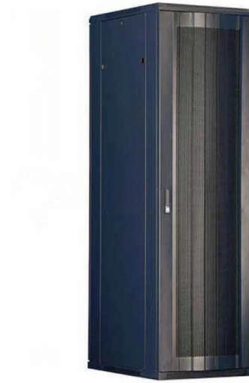
Cable tray shall be fixed to the structure at not more than 3 meter intervals, depending on cable tray thickness. Cutting of Stainless Steel Wire Mesh Cable Tray:





Precautions for Cable Tray Installation

Under normal circumstances, the distance between the support arms of the cable tray should be about 1.5 m - 3 m, and should be verified according to specific



Contact Us

For datasheets, pricing, or custom high-speed optical interconnect solutions, please visit:
<https://www.syropy.com.pl>