

# **How many ports does a PoE-powered switch have**





## How many ports does a PoE-powered switch have

---

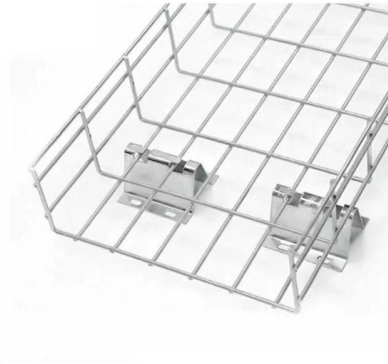


### How Many Ports Should Your PoE Switch Have for Optimal

The choice of a PoE switch ultimately depends on your network's scale and power demands. While a PoE switch 24 Port Gigabit strikes a balance between cost and capacity for

### Everything You Need to Know About Ethernet

Jump To: [History of Ethernet](#) [Ethernet and Wi-Fi](#) [Ethernet Cables](#) [Ethernet Ports](#) [Ethernet Switches](#) [Power-over-Ethernet \(PoE\) Using Ethernet in](#)

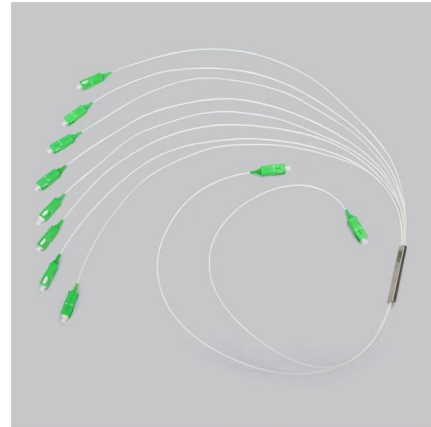


### What Is PoE Switch? How Does It Work?

PoE+ switches conform to the 802.3at standard, providing up to 30 watts of power per port. They are designed for devices that require more power, such as PTZ

### PoE vs PoE+ vs PoE++ Switch: How to Choose?

Note: the presented figures are just valuable in theory, while the total power capacity of PoE series switches in the application will be oversubscribed



### **What are PoE network devices: a complete guide**

What is PoE and why does it matter? PoE (Power over Ethernet) is a network function defined by IEEE 802.3af/at/bt that enables the delivery of electricity using

### **Troubleshooting and Replacing a Faulty MS Switch**

Note: The non-PoE MS220 switches do not have audible fans; however, it is still recommended to leave the switch powered on for a few minutes. If one is available, try using a different power supply for the



### **Everything you need to know about the PoE Switch**

PDF file

### **2024 PoE Switch Quick Reference Guide - D-Link**

These Layer 2 switches support up to 10 Gbps, 370W PoE power budget, 6 kV surge protection, and automatic Voice VLAN. With 10 to 52 ports, they can power and connect access points,



cameras,

### **The Ultimate Guide to Power Over Ethernet Switches:**

Discover everything you need to know about PoE switches in our ultimate guide. Learn how Power over Ethernet simplifies network deployment

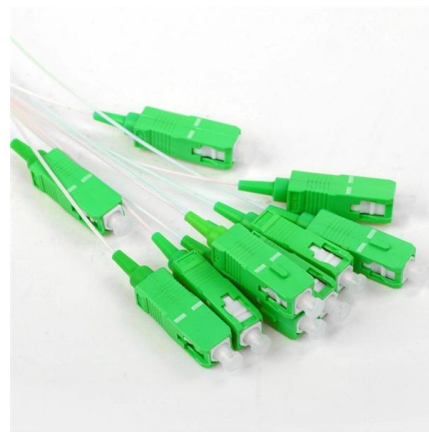


### **How Many Ports Should Your PoE Switch Have for Optimal**

From small offices to large enterprises, PoE switches come in various configurations to provide both power and data to connected devices. A PoE switch 24 Port Gigabit is commonly used

### **Meraki Switches**

Meraki MS Switches combine enterprise-grade hardware with cloud management, allowing your organization to scale effortlessly. Explore the models.



### **A Comprehensive guide to PoE Switches and their Uses**

Which One Should You Choose? Choose a PoE switch if you need to power and connect IP cameras, VoIP phones, access points, or IoT devices without extra



### What Is a PoE Switch and How Does It Work?

With a PoE network switch, the network connectivity and the power to supply the PD (powered device) can both be efficiently realized over the Ethernet cable.



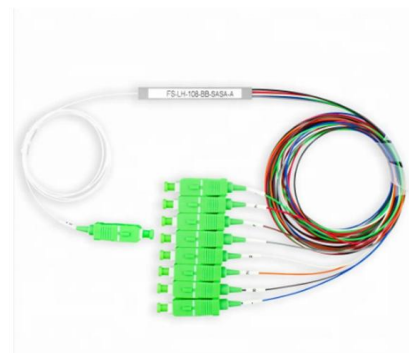
### What is PoE Switch? , Tech Details, Working, Advantages

The most common types of PoE switches are unmanaged or managed switches with 8 or 24 ports; however, there are also 48-port models available too if you need more ports than these

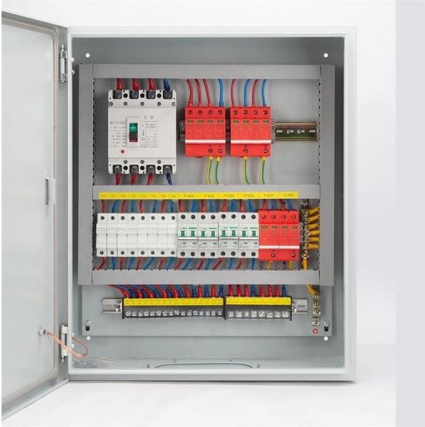


### What is PoE Switch: Everything You Need to Know

The main difference between a PoE switch and a regular Ethernet switch is the presence of PoE ports on the former. These allow devices to be



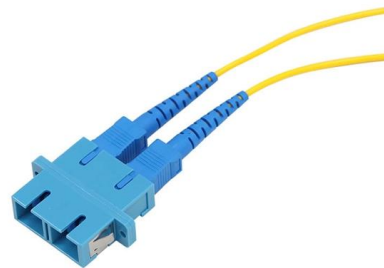
### What is a PoE Switch? Power over Ethernet Explained



Power over Ethernet (PoE) Capability: A PoE switch can provide power to PoE-enabled devices through the Ethernet cable, eliminating the need

### What Is a PoE Switch? Complete 2025 Guide (For

Learn what is a PoE switch, how it works, types, power budgets, and real uses. Simple 2025 guide for home, office, and installers and shops.



### What is a PoE Switch

A Power over Ethernet switch is a network switch that has PoE functionality integrated. Learn about different variations, limitations and benefits of

### PoE Switch: Ultimate Guide

A 24-port PoE switch provides Power over Ethernet (PoE) capabilities across 24 ports. It is commonly used in medium to large-scale networks, such as



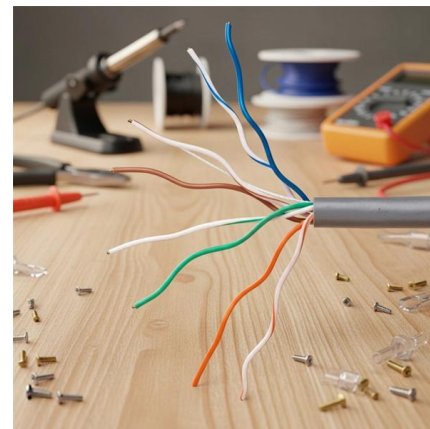


### What is a PoE Switch

Number of PoE-enabled ports: PoE switches can provide anywhere from four to 48 PoE output ports, also called PSE (or "Power Sourcing

### What Is a PoE Switch and How Does It Work?

Based on the port number, the 8, 12, 24 port PoE switches, 48 port PoE switches are commonly seen in the market. When turning to the control level over the network,



### How Many Ports Can a PoE Switch Have?

Determining how many ports your PoE switch should have is essential for creating an efficient and scalable network. Whether you choose a compact 4 Port PoE Switch for a small office or

### What is a PoE Switch and How Does it Work?

5-port full Gigabit standard POE switch module development motherboard It uses existing standard Ethernet transmission cables to transmit





CAT 7 FTP JACK



### What is a PoE Switch?

PoE switches are one of two types of PoE implement PSEs: endspan switches and midspan PoE injectors. A switch is a device that allows network devices to connect with one another.

### PoE Switches Explained: All the Important Facts You

The Core Advantages of PoE Switches Compared with traditional Ethernet switches, PoE switches have the following advantages: 1. No additional power wiring



### What Is PoE Switch? Where Can You Use It?

PoE Standards The original PoE standard, known as IEEE 802.3af, enabled the transmission of 15.4 watts of power on a switch's port. Only 12.95 watts is

### PoE Switch: Ultimate Guide

Discover the convenience of a PoE switch - a single device delivering both data and power. Simplify your network setup for improved efficiency.





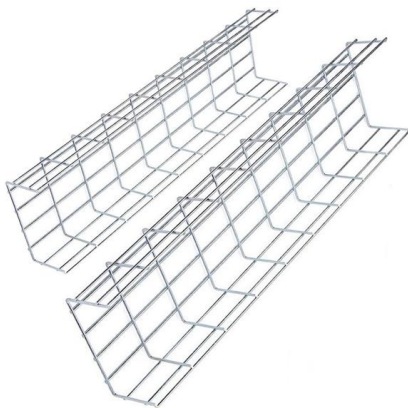
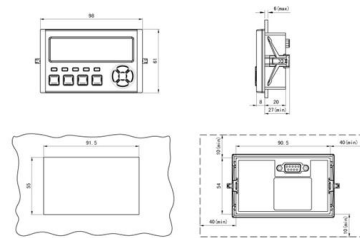
## What Is Poe Switch: Everything You Need to Know

It allows for better management of power allocation, prioritization of devices, and monitoring of network performance. Q: How many ports do I need



## What Is A PoE Switch And How To Choose The Right

PoE (Power over Ethernet) is a technology that allows power to be transmitted through network cables, A PoE switch comes equipped with numerous



## How Does a PoE Switch Work?

Most industrial PoE switches feature 5 or 8 ports, whereas non-industrial PoE switches may have 8, 24 or 48 ports. These switches are classified into two types - managed and unmanaged

## Contact Us

For datasheets, pricing, or custom high-speed optical interconnect solutions, please visit:  
<https://www.syropy.com.pl>