

# **How many optical ports should a 10 Gigabit switch use**





## Overview

---

Port Configuration: A 10Gb switch typically provides multiple 10GE SFP+ ports and 40GE QSFP+ ports. Functional Features of 10Gb/s Switch

10 Gigabit Ethernet (10GE, 10GbE, or 10 GigE) is a group of computer networking technologies for transmitting Ethernet frames at a rate of 10 gigabits per second. For longer-distance connections, SFP (Small Form-Factor Pluggable) ports are often used. Unlike copper cables, SFP ports rely on fiber optic cables, which are immune to electromagnetic interference (EMI). SFP+ is commonly used in high-speed data transmission in data centers, servers, SANs and networking equipment. Q: How many ports do 10G switches typically have?

Q: Am I allowed to use a 10G switch in a network that has devices operating at slower speeds?

Q: What do SFP+ ports bring to the 10G switches features?

Q: How do 10G switches help improve network performance in large organizations?

What is a 10G.



## How many optical ports should a 10 Gigabit switch use

---



### Fast Ethernet Switch vs Gigabit Ethernet Switch: Basics,

This article will help you determine which switch type can satisfy your real needs. e Gigabit switch and the Fast Ethernet switch? How to choose the

### Unlocking the Power of 10 Gigabit Ethernet: Your Guide

Port Speed: Ensure the switch supports 10GbE or multi-gigabit options like 2.5GbE and 5GbE. Port Types: Choose between RJ45 ports for copper or SFP ports for



### SFP vs SFP+: The OEM Guide to 1G and 10G Optical

Most enterprise switches (Cisco, Aruba, Juniper) allow 10G SFP+ ports to accept 1G SFP modules. However, you may need to manually set the port

### The Ultimate Guide to Choosing the Right 10G Network

A: While selecting a 10-gigabit switch, it is important to have in mind the number of ports required, if managed or unmanaged switches are needed,



### SFP vs SFP+: What's the Difference and Which One

An SFP module in an SFP+ port will run at 1G speed (not 10G). An SFP+ module in an SFP port will not work (electrical incompatibility).  
Example: If



### Solved: 10G and Multigigabit

I've eventually bought a cisco switch and found that the answer to my question is hardware specific, i.e. some RJ45 ports are only 10Gb while others are multigigabit ones.



### 10Gb Switch Concepts, Parameters, and Application Scenarios

Port Configuration: A 10Gb switch typically provides multiple 10GE SFP+ ports and 40GE QSFP+ ports. Some models also support expansion slots to increase the number of ports.





## Understanding 10G Switches: The Future of Network Connectivity

Explore 10G switches: the future of network connectivity. Learn about 10Gb Ethernet, gigabit speeds, 10G switch features, and port options for your setup.

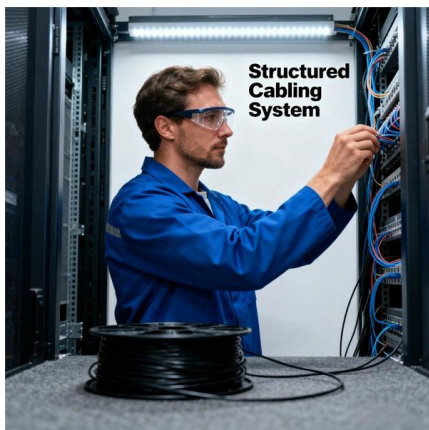


## Ultimate Guide to 10gb Switch for Your Ethernet Network

A switch with 16 ports is recommended for medium to large-scale deployments since it permits extensive connection and allows a greater number

### TP-Link

Shop TP Link 8 Port 10/100/1000 Mbps Gigabit Smart Ethernet Metal Switch Gray products at Best Buy. Find low everyday prices and buy online for delivery or in-store pick-up. Price Match Guarantee.



## Cisco 10GbE Optics Guide

Because of this, many of the small SFP+ based 10GbE switches use 1G/10G ports, giving an added degree of flexibility. SFP+ optics have become, by far, the most



## OEM 10GbE Optics Cheat Sheet , Tech Guide , Curvature

Because of this, many of the small SFP+ based 10GbE switches use 1G/10G ports, giving an added degree of flexibility. SFP+ optics have become, by far, the most commonly used of all 10 gigabit



### 10 gig switch vs 2.5 gig vs 1 gig: Which do you need?

There are so many choices among network switches these days. Especially in the home lab or consumer market there are now great choices for 10

### 10 Gigabit Ethernet Switch: Unleashing the Power of 10GB Networking

Explore fibermall about 10 Gigabit Ethernet switches! Unlock the potential of 10GB networking with this in-depth guide.



### What is a 10G SFP+ Switch and How to Use It?

This 8-port SFP+ managed switch comes with eight high-speed 10G SFP+ ports and a 10G fiber-to-copper module, making it easier to integrate with your existing network infrastructure.



## How to Choose the Best 10gb Switch for Home?

There are two main port types of 10gb switches, copper ports and optical ports. The copper ports on a 10 gigabit switch support Ethernet cables like



## Exploring 10 GbE Switch: A Deep Dive into Ports,

The adoption of 10 Gigabit Ethernet (10 GbE) solutions is primarily driven by the growing demand for 10 GbE switches, which offer improved

## What Is 10 Gigabit Ethernet (10 GbE), Is it Right for

Discover what 10 Gigabit Ethernet (10 GbE) network is? & whether it is worth the upgrade. Learn about the benefits, uses, & if it's essential for your setup.



## How to Choose the Best 10gb Switch for Home?

As the popularity of 10 Gigabit Ethernet grows and the price of 10 Gigabit devices drops, more and more individual home users, such as technology



### 10G vs 25G vs 100G NICs: Selection Guide, Use Cases,

A complete guide to NICs. Learn differences in speed, PCIe requirements, latency, cabling, and use cases. Includes deployment examples,

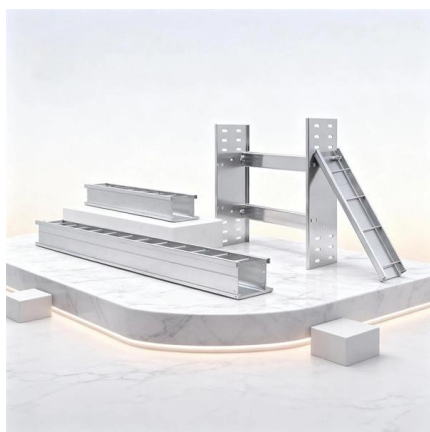


### Gigabit Ethernet Switch Guide: How It Works, Types

Learn what a Gigabit switch is, how it works, and managed vs unmanaged differences. Fix slow speeds (100Mbps issues) and optimize your

### Cisco Catalyst 1000 Series 24-Port and 48-Port Switch

Cisco Catalyst 1000 24-Port and 48-Port Fast Ethernet Switches This section describes the front panel components of Cisco Catalyst 1000 24-port and



### Guide: 10 Gigabit Networking

10 Gigabit Switches The complete approach is to connect your 10-gigabit hosts directly into your network via a 10-gigabit switch. Unfortunately, this is where things get a little more



## Ultimate Guide to 10gb Switch for Your Ethernet Network

How to Choose the Right 10 Gigabit Switch?  
Factors to Consider When Selecting a 10GbE Switch Various aspects decide the selection of a 10



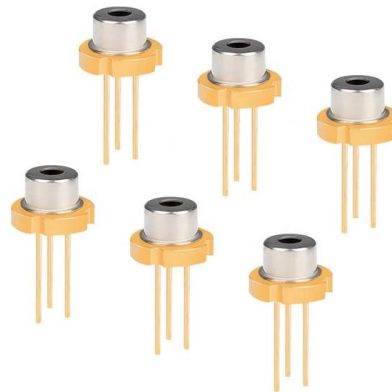
### Gigabit Switches

What are the Features of Typical Fast Gigabit Switch? A Gigabit switch helps boost network speed and usually supports speeds of 10/100/1000 Mbps for copper



### What is a gigabit switch?

If the switch is connected directly to the destination device, the device accepts the data packet, responds, and the transmission is complete. If the device is



### What Is an SFP Port on a Gigabit Switch?

Gigabit switches, in particular, are commonly equipped with multiple SFP ports to enhance network connectivity. But what exactly is the role of an SFP



## The Ultimate Guide to Choosing the Right 10G Network

Frequently Asked Questions (FAQs) Q: What is a 10G network switch and what is its importance?  
Q: How do I choose the correct 10-gigabit switch for



## Unleash Blazing Speeds: The Ultimate Guide to 10

Q: Can I use 10 Gigabit switches to reach greater security levels with our business networks? Q: Does a small business network call for certain kinds of



## Contact Us

---

For datasheets, pricing, or custom high-speed optical interconnect solutions, please visit:  
<https://www.syropy.com.pl>