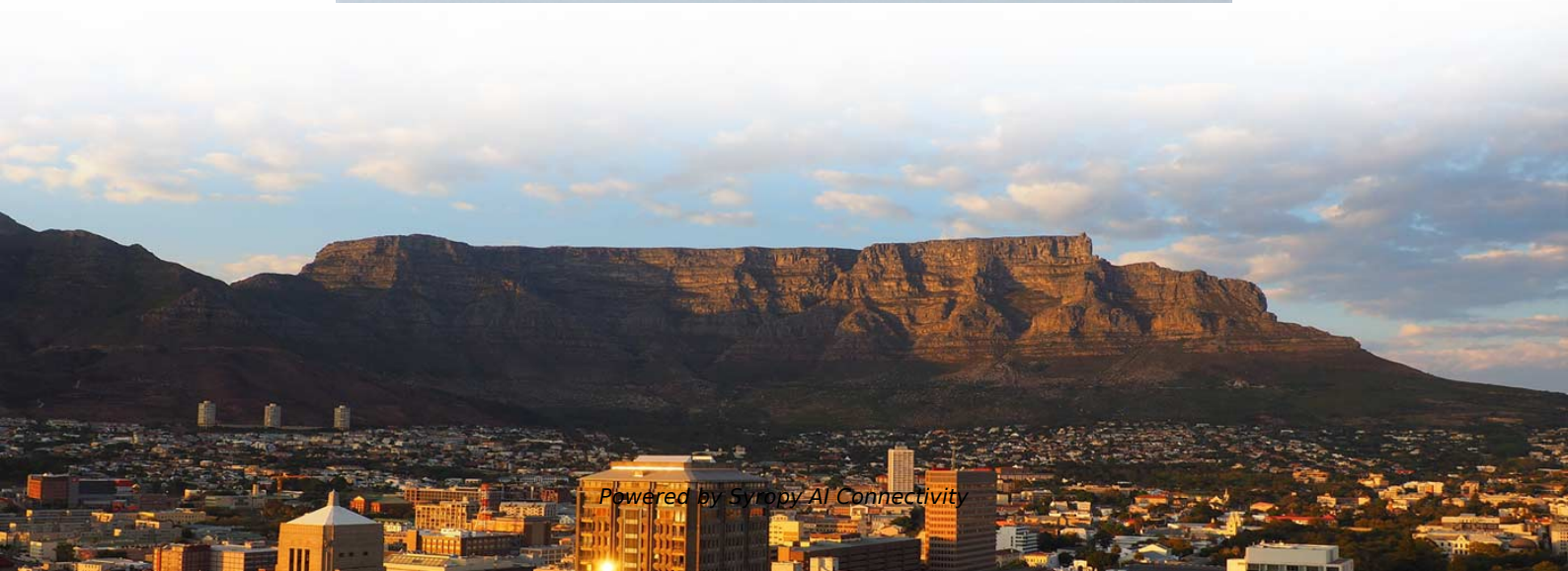


How many monitoring points require a core switch





Overview

For systems with fewer than 32 channels, a core switch is generally unnecessary. A core switch, installed in the core layer, serves as the hub of the network architecture, primarily used for high-speed data exchange and connecting multiple subnets or LANs. The aggregation switches then send traffic from the aggregation layer to a core layer through up to 8x100-GbE links (towards two core switches) and then connect the core switches to the FortiGate devices for the core security services; the routing uses 100-Gbps links.



How many monitoring points require a core switch

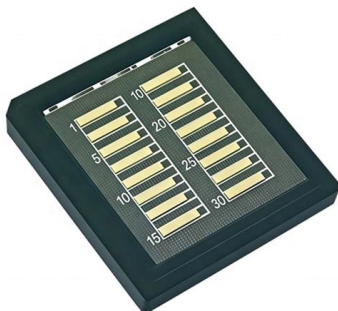
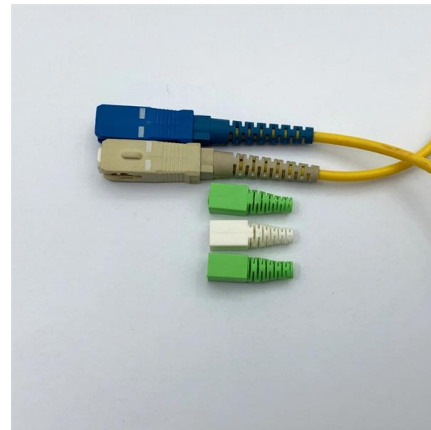
Security Dry Goods: How many road monitoring heads need to use a



Basically, there is no need to use the core switch below 50 routes, and the two-layer switch and router can be used, while about 100 routes will use the efficient routing function of the

Core Switch vs. Distribution Switch vs. Access Switch

Owing to the importance of core switches, the quality and performance of the core network switches must be tested. To ensure that the switches can perform tasks



FS Community

Hier sollte eine Beschreibung angezeigt werden, diese Seite lässt dies jedoch nicht zu.

What is a Core Switch?

What is a Core Switch? A Deep Dive A core switch is the backbone of a network, providing high-speed switching for data packets between different network segments; essentially, it's



Step 1: Network Sensor Location Guidelines

By nature, core switches are ideal network traffic convergence zones, and Rapid7 recommends a mirror port-equipped core switch for your network sensor deployment for this very reason.



Difference between a core switch and 'normal' switch?

What's the difference between a Core Switch and a normal switch? I have 4 switches in a stack that everything connects to. This is plugged into a router to reach outside. I was told recently I should



What Is Core Switch?

A core switch is the high-capacity networking switch that forms the backbone of a network, directing data traffic between different network segments and ensuring efficient



What Is a Core Switch? Network Backbone Architecture Guide

Discover what a core switch does in a 3-tier network model. Learn about ASIC routing, collapsed core vs dedicated core topologies, and SMB sizing guides.

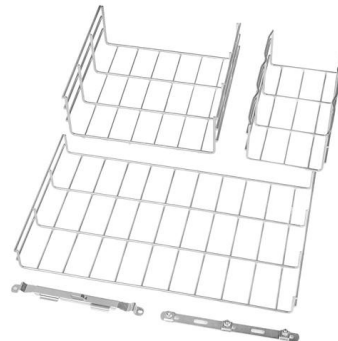


Planning for a Core Switch Deployment

Hello All, I am planning for a core switch requirement is it should connect 2000 access ports in the distribution / access layer and scale in future. I have the option for using 9500-48 port (in

What Is a Core Switch?

If your organization requires high-speed, always-on network connectivity, a core switch is not a luxury--it's a necessity. Whether you're building a data center, scaling an enterprise network, or



How many surveillance cameras require a core switch?

For systems with fewer than 32 channels, a core switch is generally unnecessary. For systems with 32 or more cameras, the decision to use a core



directory-list-2.4.txt/directory-list-2.4.txt at main

Customer stories Events & webinars Ebooks & reports Business insights GitHub Skills



What is a Core Switch , Functions and Difference over Normal Switch

Network aggregation switches, on the other hand, connect many networks over a single link. As a result, it increases the network's bandwidth. This article explained the question of what is

Do I need a core switch for 100 Channel IP Cameras?

If the core switch is not used, all the monitoring is in one subnet. A broadcast storm may form enough to bring down the entire network, and security



How to choose a PoE switch for surveillance system?

The 10/100M port of the aggregation switch is connected to the access switch and the gigabit port is connected to the core switch. The number of cameras on the



unsupervised_topic_modeling/topics/en/17/100/100/topics at

Contribute to [annontopicmodel/unsupervised_topic_modeling](#) development by creating an account on GitHub.



What Is the Core Switch?

The core switch is the central, high-capacity switching point within a network, responsible for forwarding data between different parts of the network and often connecting to multiple

How to determine the number of cores required when using fiber optic?

-> Stacking: If the core switch is dual-system hot standby (all working at the same time), 6 cores are sufficient (2 cores each use 2 cores, and 2 cores are redundant). ->No stacking: One switch needs 4



What is Switch Monitoring? Metrics, Tools & Best

Network switches are the quiet workhorses of every modern IT environment. They route every packet, connect every device, and ultimately determine whether users experience fast, reliable



What is Core Switch and How to Choose?

Discover what a core switch is and learn how to choose the right one for your network. Explore key features in selecting a core layer switch. Make



Core Switch

Definition of Core Switch A core switch is a high-capacity, central networking device that serves as the backbone of a computer network, facilitating

Network Switch Components and Technical Analysis

Control Module The control module manages various switch components, such as the interface modules and the switching matrix. It also includes the operating system and management software of the



Network design principles , FortiSwitch 7.6.0

Fortinet recommends these ratios when you design modern campuses for a refresh or a new building. The calculation becomes more difficult when mixing multigigabit ports for access points and gigabit



Do I need a core switch for 100 Channel IP Cameras?

Why use the core switch? There is no need to use core switches for less than 50 roads, and layer two switches plus routers can be used. And about

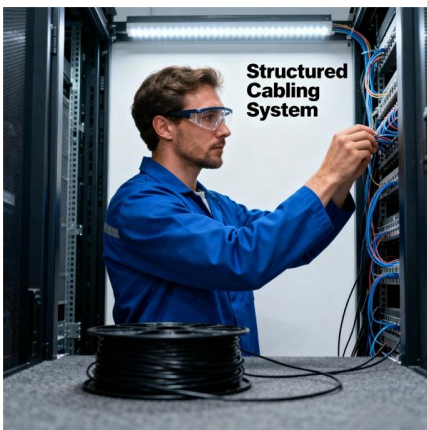


What Is a Core Switch? Network Backbone Architecture Guide

Networks scaling between 50 and 150 devices are optimally served by a collapsed core topology, and only networks exceeding 150 devices require a dedicated enterprise core switch to

What Is a Core Switch?

Explore what a core switch does, why it's essential for enterprise networks, and how to choose the right model. Includes real-world applications and Cisco/Huawei/Aruba model comparison.



Core Switches: The Pillar of Network Infrastructure

Get a closer look at core switches: the nerve centers of network infrastructure that enhance performance and facilitate growth.



What Is a Core Switch in Networking?

What Is a Core Switch in Networking?
Understanding the Backbone of Your Network A core switch in networking serves as the high-capacity



Best practice for core and access switches in IP

I am confused if the Cisco S G-300-28 MP as an access switch and catalyst 3850 as a core switch will be the best choices to operate the network

Contact Us

For datasheets, pricing, or custom high-speed optical interconnect solutions, please visit:
<https://www.syropy.com.pl>