

How many meters away is the level 3 electrical distribution box from the machinery





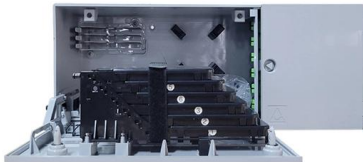
Overview

7 meters) high makes it easily accessible without the need to bend or stretch excessively. The following table of Safe Distances from EMF Sources is offered below to help reduce your exposure to electromagnetic fields (EMFs). But the actual EMFs emitted from different sources can vary greatly, and the distances needed to reach a desired "safety level" are difficult to predict.

Dedicated space: The space equal to the width and depth of electrical equipment in addition to the space extending from the floor to 6 feet above the equipment or structural ceiling. The International Standards of Practice for Inspecting Commercial Properties (ComSOP) states that the inspector. I am currently wiring a new build electrical dwelling consisting of standard domestic circuits ie.



How many meters away is the level 3 electrical distribution box from



The installation requirements for the distribution box

A distribution box is the heart of any electrical system. It takes the incoming power and safely distributes it to different circuits throughout your

Three Phase Electrical Wiring Installation in a Multi

In today electrical wiring installation tutorial, we will show how to wire a Three Phase Consumer Unit Installation in a multi-storey building from Utility Pole to a 3-Phase



Electrical Safety Clearance Standards , PDF , Volt , Cable

The document outlines electrical safety clearance standards for various utilities in

Minimum Clearance Standards for Substations , PDF

The document provides guidelines on minimum clearance requirements for electrical substations and overhead transmission lines. It includes minimum clearance



Videos Hub Portal - Blog Sharing Platform & Metacafe

Videoshub is a creative platform since 2008 with blogs, videos and a Metacafe archive featuring viral clips, movies, classics and internet favorites.



Safety Clearance Recommendations for Electrical Panel

Clearance Tables includes working space and clearance around indoor electrical panel, Circuit Board (NES 312.2), clearance for conductor entering



IEC / BS 7671 Codes for Consumer Unit and Distribution

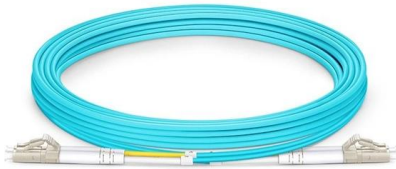
All the protective devices used in the consumer unit for residential and distribution board for commercial and industrial application must be verified by BS EN 61439





Consumer Unit further than 3 metres from the metering

The DNO will only allow THEIR Service fuse to be used to protect YOUR Meter tails up to 3 Meters in length. More then that then YOU have to



Essential Rules for 3-Level Electrical Distribution

Follow key principles: no cross-level wiring, one machine-one switch, $\leq 30\text{m}$ box spacing, dry/ventilated installation for safe distribution.

How to Choose the Right Location for Your Electrical

Electrical panels cannot be placed anywhere near the material that ignites easily for instance clothes closets. The Best Electrical Panel Locations



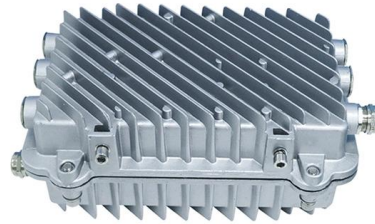
Safe Clearances for Electrical Equipment: Working

Side clearance: There should be a minimum of 30 inches of clearance from the sides of all electrical equipment, but in no case less than the



Essential Rules for 3-Level Electrical Distribution

The distance between a distribution board and a switch box shall not exceed 30 meters. The horizontal distance between a switch box and its controlled fixed



Is there a max distance from meter box to consumer unit?

So im trying to make sure i dont make a mistake when fitting the elctricity meter box. I think i read somewhere that the distance from the meter to the consumer unit has to be 3m or less.

The height requirement of distribution box

When installing the distribution box, the wooden box must be removed. During electrical piping, the power supply and load pipes of the distribution box shall be arranged in order from left to



Installation requirements for distribution boxes

Distribution boxes shall be made of non-combustible materials; open distribution boards may be installed in production places and offices with low electric shock risk; enclosed cabinets shall



Key Points Of Installation And Collocation Of Distribution Box In

Distribution box and switch box shall be made of iron plate or high-quality insulating material, and the thickness of iron plate shall be greater than 1.5mm. The electrical equipment in the distribution box



The height requirement of distribution box

When the number of box holes is insufficient or the hole diameter is not consistent with the pipe diameter of the distribution box, the hole opening machine can be used to open the hole,

Connecting the Meter to the Breaker Box: A Guide to

Connecting the wire When connecting the wire from the meter to the breaker box, it is important to follow certain guidelines to ensure a safe and efficient electrical



What is the Ideal Installation Height for a Distribution Box

The proper installation of a distribution box involves placing it at the right height to ensure safety and convenience. Mounting it 4.5 to 5.5 feet (1.4 to 1.7 meters) high



Regulations / guidance regarding siting of distribution

Hello All Is there any regulations regarding the siting of distribution boards like level area in front of board and dimensions of area in front of board etc?



What is the Ideal Installation Height for a Distribution Box

Install a distribution box at 4.5 to 5.5 feet high for safety, accessibility, and compliance. This height ensures easy use and protection from hazards.

The difference between the first, second, and third levels of

Third level distribution box: refers to the final junction box of each electrical appliance, which can be movable and fixed. Remember that the leakage protection switch is the last one, and



Electrical Clearances: Requirements and Safe Distances

A common standard is a minimum 36-inch horizontal separation between a gas meter riser and the nearest edge of an electrical panel or meter. When either meter is enclosed in a cabinet, the



How Much Clearance Is Required Around an Electrical Panel?

The electrical panel, often called the breaker box or load center, is the central distribution point for all electrical power entering a home. Because this equipment contains the main service disconnect and



Outdoor Electrical Distribution Box Specifications: NEC

Complete specification guide for outdoor electrical distribution boxes covering NEC Article 312 requirements, NEMA ratings, sizing calculations, and

Electrical System in Buildings

This article covers the electrical system in buildings (including distribution) at a very basic level. We will discuss the general principles for how



Contact Us

For datasheets, pricing, or custom high-speed optical interconnect solutions, please visit:

<https://www.syropy.com.pl>