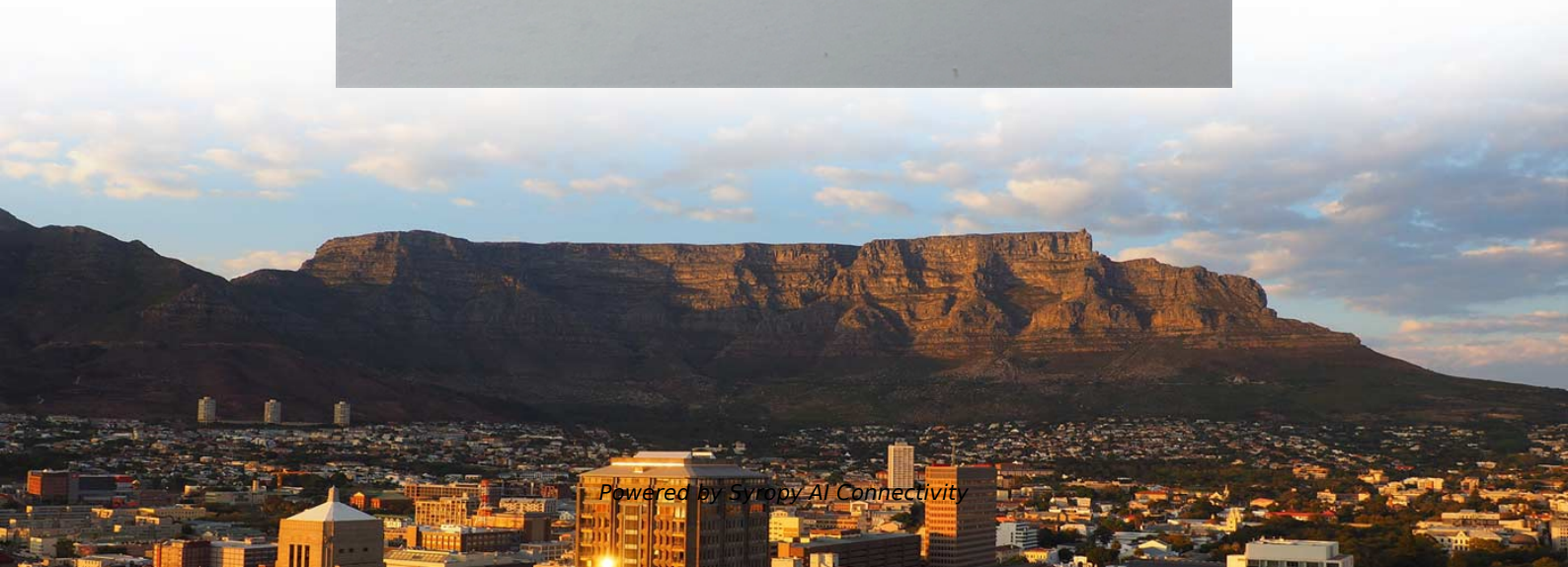
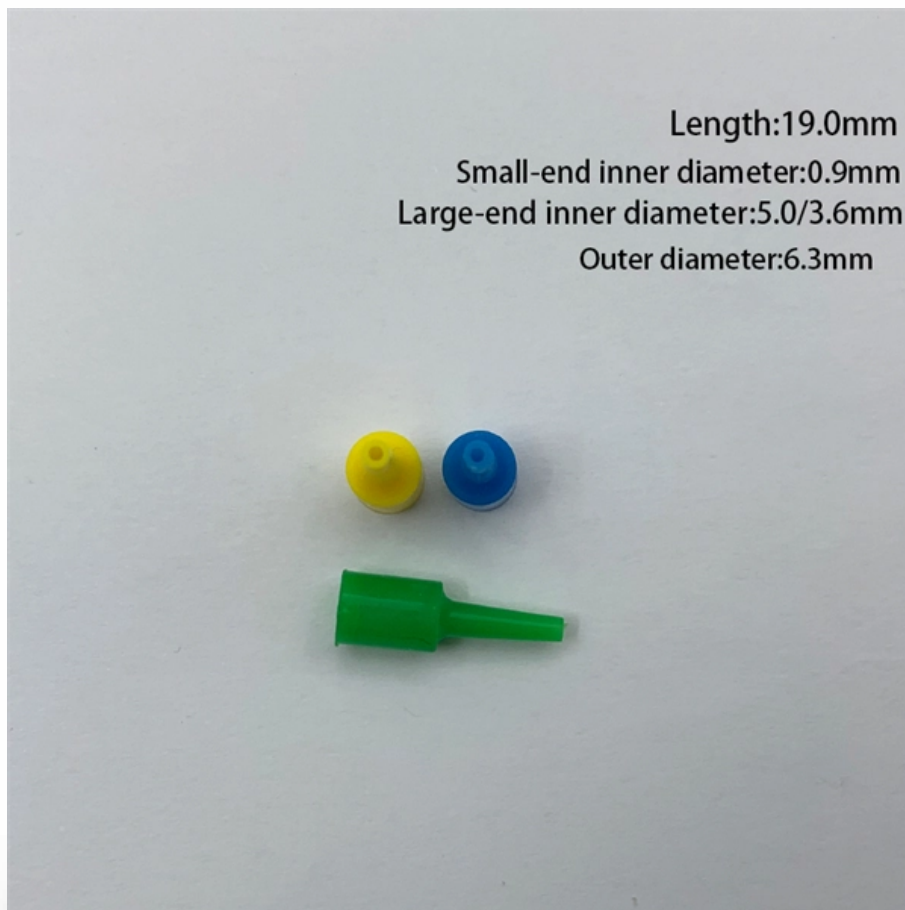


How many circuits are connected in the distribution box





Overview

North American distribution boards are generally housed in enclosures, with the positioned in two columns operable from the front. Some panelboards are provided with a door covering the breaker switch handles, but all are constructed with a dead front; that is to say the front of the enclosure (whether it has a door or not) prevents the operator of the circuit breakers from contacting live electrical parts within. They include standard circuit breakers for lighting, outlets, and major appliances like water heaters and air conditioning units. You're not just calculating numbers—you're designing a system that matches how you live. A distribution board (also known as panelboard, circuit breaker panel, breaker panel, circuit breaker, electric panel, fuse box or DB box) is a component of an electricity supply system that divides an electrical power feed into subsidiary circuits while providing a protective fuse or circuit. The hub distributes electrical power from a single input source to various circuits throughout a building.



How many circuits are connected in the distribution box



Size configuration of multiple circuit breakers in the

Choose the right size and setup for multiple circuit breakers in your distribution box to ensure safety, code compliance, and room for future upgrades.

What Is A Distribution Board and How Does It Work? , TOSUNlux

Do you wonder how electric power is distributed in different parts of your home? Well, a distribution board or distribution box helps to do that! As the name goes, it is the load center and



Distribution Boxes Explained: Types, Functions, and

Beyond simple power distribution, these units provide essential safety measures that protect against electrical hazards like short circuits and power

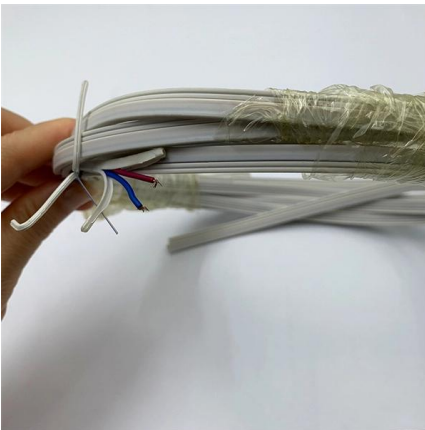
Understanding Distribution Boxes:A Comprehensive Guide

A distribution boxes is an essential device that manages the safe and efficient flow of electrical power throughout different areas of a building or facility.



Distribution Box and Selection Guide

Different settings have distinct electrical requirements: Residential: Homes typically require single-phase power and a Distribution Box with fewer



WORLD WIDE WEB JOURNAL Home

Capturing the state of distributed systems with XML Rohit Khare, Adam Rifkin November 1997pp 207-217 article



What is an Electrical Distribution Box? A

An electrician will connect the mains power to the distribution box, then branch out from there to different circuits. Once everything's wired, testing



How to Calculate the Size and Number of Circuits for a Distribution Box

Planning Your Circuits: More Than Just Math
You're not just calculating numbers--you're designing a system that matches how you live .
Kitchen Strategy: Avoid plugging your fridge and toaster oven



Power Distribution Boxes Explained Simply

Electricity enters the box from the main power line. Inside the box, the power is split into multiple circuits --each one leading to a different area, like your

Single Phase DB Box Wiring: Your Ultimate Guide!

Wiring a single-phase distribution board (DB) box is a fundamental task for ensuring that electrical circuits within a residential or commercial space are safely and efficiently managed. This



Wiring of the Distribution Board From Energy Meter to

How to Wire a Distribution Board? Distribution Board also known as "Panel Board", "Switch & Fuse Board" or "Consumer Unit" is a box installed in the building





Distribution Boards

Distribution boards, often referred to as electrical panels or breaker boxes, serve as the nerve center of any electrical system. Here we explore the crucial parts of a distribution board and gain insights into

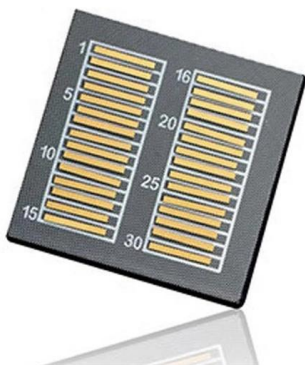


DB BOX(Electrical Distribution Box): Everything You

Wiring: Next, the electrical cables will be connected to the incoming power source (like the main distribution panel) and the outgoing circuits. Circuit

How to Calculate the Size and Number of Circuits for a Distribution

That's what happens when you overload circuits. But with some simple math and planning (don't worry, we'll walk through it!), you can design a system that works smoothly even when you're running all the



Distribution Boxes: Types and Functions

A distribution box (distribution board/DB box) distributes incoming power to multiple circuits and typically houses protective devices such as



Power Distribution Boxes Explained Simply

Bus bars and internal wiring help distribute electricity to each connected circuit efficiently. The box keeps everything safe by balancing the load,



Explore Power Distribution Box Types and Functions

Wiring: Connecting the mains supply to the distribution board and from there to various circuits, following all safety protocols. Testing: Ensuring all

What is the Internal Structure of The Distribution Box

Terminal boxes are mainly used for connecting electrical terminals to devices or systems, without the protection features of a distribution box. In short,



The Complete Guide to Distribution Box: Installation, Types & More

Home distribution boxes typically handle single-phase power supplies and contain 6 to 24 circuits. They include standard circuit breakers for lighting, outlets, and major appliances like water



What is an MCB Distribution Box and Why It's Essential , Western

The power from the mains supply enters the MCB Distribution Box and is then distributed into multiple circuits, including lighting, sockets, air conditioning units, and kitchen appliance circuits, etc. Each



What Is a Distribution Box?

Some distribution boxes have a longer cord than others. When choosing a distribution box, make sure the cord is long enough to reach the main

Distribution Box Guide: Types, Components & Solutions

It ensures that circuits are safe, organized, and easy to manage. A properly installed electrical distribution box is important for safety. It also allows



Distribution Box Wiring Steps

?Wiring and Binding? ?Wiring Direction?: Wiring between the main circuit breaker and each branch circuit breaker in the box generally goes on the left, and



Distribution Box Guide: Types, Components & Solutions

What is a Distribution Box? A distribution box, or DB box, is a circuit breaker enclosure. It is a vital part and central hub of any electrical system. The



Understanding Distribution Boxes:A Comprehensive Guide

A distribution box, also known as a distribution panel or board, is a cabinet that holds electrical parts used to supply power to multiple circuits within

Distribution board

OverviewNorth AmericaUnited KingdomManufacturer differencesLocation and designationTheatre lighting

North American distribution boards are generally housed in sheet metal enclosures, with the circuit breakers positioned in two columns operable from the front. Some panelboards are provided with a door covering the breaker switch handles, but all are constructed with a dead front; that is to say the front of the enclosure (whether it has a door or not) prevents the operator of the circuit breakers from contacting live electrical parts within. Busbars carry the current from incoming line (hot) conductors to the breakers



Power Distribution Boxes Explained Simply

Where Power Distribution Boxes Are Used Power distribution boxes are essential in many settings,



from homes to hospitals. Here's a look at some



Understanding Distribution Boxes: Your Guide to Power

A: A junction box is primarily used to connect electrical wires, while a distribution box is designed to distribute power to various circuits. The distribution



Contact Us

For datasheets, pricing, or custom high-speed optical interconnect solutions, please visit:
<https://www.syropy.com.pl>