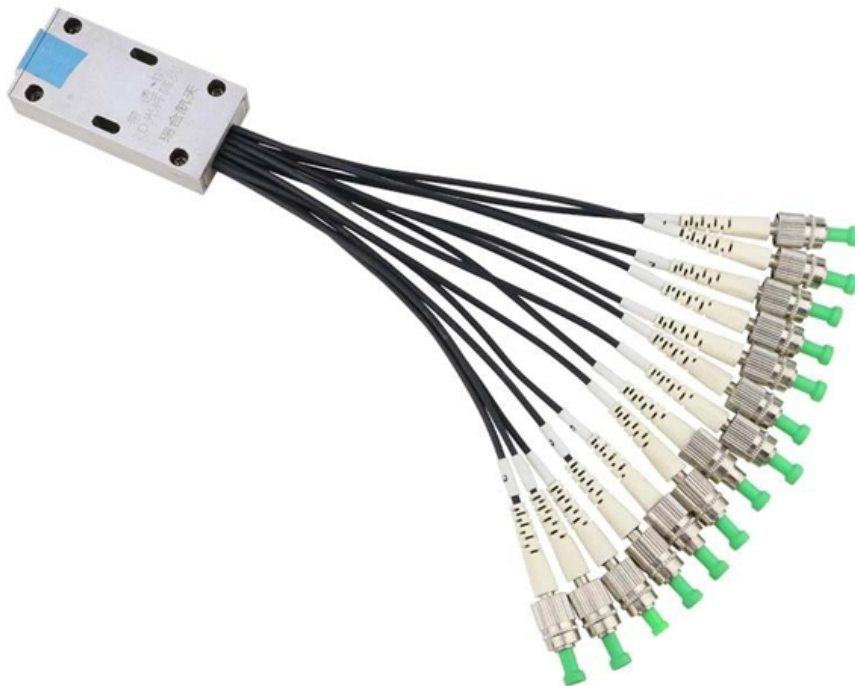




**Syropy AI Connectivity**

# **How long does it take to construct a telecommunications tower**





## Overview

---

The typical setup time for a standard rapid deployment telecom tower ranges from 15 to 60 minutes once the unit arrives on site. However, complex installations requiring guy wires, heavy payloads, or difficult terrain can extend this window to 2-4 hours. Zoning/permitting can extend timelines to months or years, especially in regulated zones. Telecommunications construction involves the systematic deployment of communication infrastructure, including fiber optic cables, wireless towers, data centers, and network equipment. Site Planning and Design: This phase involves assessing the need for a new mobile site, selecting a suitable location, and designing the layout of the infrastructure. Building a telecommunications tower is a BOT project and a logistical and technical challenge that requires precise planning and daily team commitment.



## How long does it take to construct a telecommunications tower

---

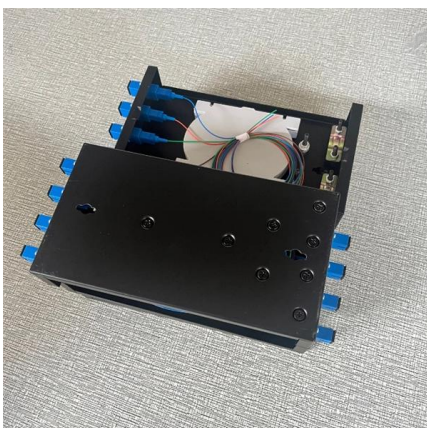
### Telecom Tower Installation Timeline

Telecom Tower Installation Timeline This document outlines the tasks, durations, dependencies, and timeline for a telecom tower construction project.



### How long is a high-rise building typically constructed?

The construction time for a high-rise building can vary greatly depending on several factors such as the building's height, design complexity, location, construction method, and available resources.

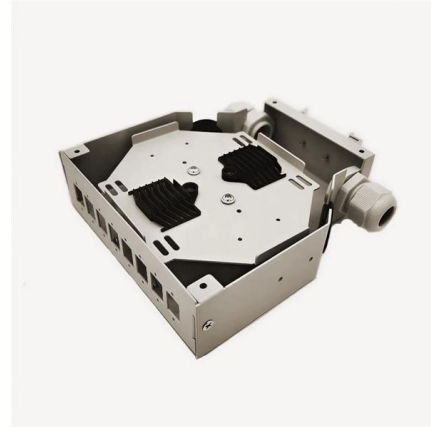


### How to Build Your Own Cell Tower

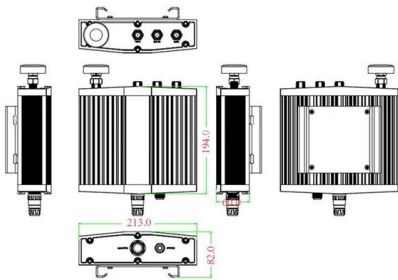
From the time that a building permit is issued for the tower, it typically takes one to two months until it is operational. How much does it cost to build a cell tower?

### Telecoms Infrastructure Blog: Planning, Constructing,

Taking the post, the comments, some help from ChatGPT, here is a detailed process of planning, constructing, and commissioning a mobile network site. If you have



**Mechanical drawing**

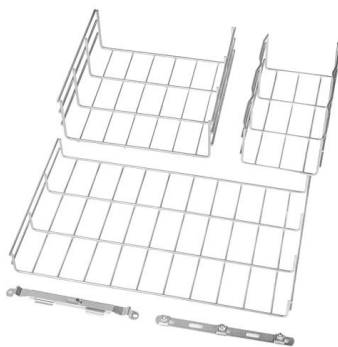


### **Understanding Telecommunication Towers**

Telecommunication towers play a crucial role in providing signal coverage and ensuring reliable connectivity for wireless communication devices.

### **How Long Does It Take to Construct a Cell Tower?**

How long does it usually take to construct a cell tower in the U.S.? Most projects take 3-9 months, depending on permitting, site conditions, and activation needs.



### **Telecommunication Tower Construction**

Telecommunication Tower Construction Our skilled team specializes in Telecommunication Tower Construction, delivering high-quality, safe,



## 19 Days of Building a Telecommunications Tower - Step

Building a telecommunications tower is a BOT project and a logistical and technical challenge that requires precise planning and daily team



## Telecommunications Tower Erection , Step-by-Step

Watch the complete process of erecting a telecommunications tower, from foundation preparation to final installation.

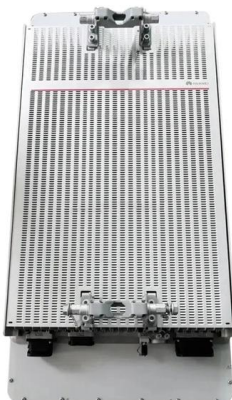
**Crackhead/pass.txt at master · moimikey/Crackhead ·**

How to create a web form cracker in under 15 minutes. - moimikey/Crackhead



## 19 Days of Building a Telecommunications Tower - Step

Building a telecommunications tower is a BOT project and a logistical and technical challenge that requires precise planning and daily team commitment.





## How Much Does it Cost to Build a Cell Tower?

How Much Does it Cost to Build a 4G vs 5G Cell Tower? The key difference between 4G and 5G deployments on cell towers is that, with 5G, more



## The Progression of Telecom Tower Construction

Telecom tower constructors play a crucial role in enhancing telecommunications infrastructure to meet the demands of a digitally connected

## Comprehensive Guide to Civil Construction for Telecom

This comprehensive guide serves as a valuable resource for engineers, project managers, and stakeholders involved in telecom tower



## Telecom Tower Builds, Planning, Managing, and Executing

Discover everything you need to know about telecommunications construction. Learn key processes, infrastructure types, and industry best



## Telecom Tower Builds, Planning, Managing, and Executing

Telecom towers are tall structures that support the antennas used for wireless communication. Building telecom towers is a complex process that involves

Waterproof and dustproof, reliable and safe

The outer classic sink design allows the sealing ring of the cabinet and door to be seamlessly compressed without leaving a trace of gaps



### Rapid Deployment Telecom Towers: Setup Time & Guide

The typical setup time for a standard rapid deployment telecom tower ranges from 15 to 60 minutes once the unit arrives on site. However, complex

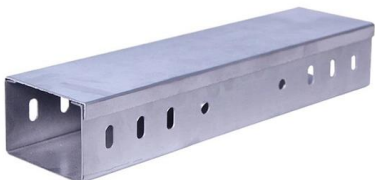
### MTSFB 001-2009

MTSFB 001:2009 Copyright 2009 Malaysian Technical Standards Forum Bhd



### Overview of Rise Tower Construction Timeline

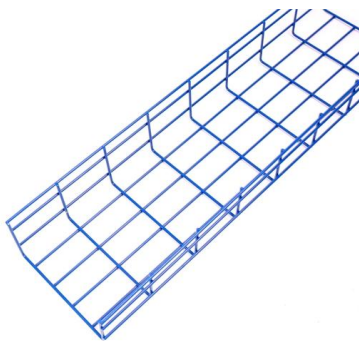
Learn about the construction timeline for Rise Tower including key phases like planning, foundation work, superstructure construction, MEP installation, and interior finishing. Understand factors that





## Cell Site Construction Process , How Mobile Works

The time to review and approve permits and applications must comply with Section 6409 of the Spectrum Act. If an application is submitted to modify an existing site,



### How Long Does It Take to Become a Tower Technician?

The telecommunications industry is rapidly expanding, and with it comes an increasing demand for skilled tower technicians. These professionals are responsible for climbing cell towers,

### 41. The Life Cycle of a Cell Site: The Construction

In this episode, Dan asks Wayne about the construction phase of building cell sites. Hit play to hear us take you through the different types of trades involved in



### Manufacturing and Erection of

The Goal for the final project was to learn the sequence from manufacturing to erection and the step by step manufacturing processes of telecommunication towers. Material used for it, different machine



## Tower and Antenna Siting

Building a new tower or collocating an antenna on an existing structure requires compliance with the Commission's rules for



## How to Build Your Own Cell Tower

FAQs How long does it take to build a cell tower? From the time that a building permit is issued for the tower, it typically takes one to two months until it is

## Contact Us

---

For datasheets, pricing, or custom high-speed optical interconnect solutions, please visit:  
<https://www.syropy.com.pl>