

How is the terminal box inside the box





Overview

A terminal box is an enclosure used to neatly terminate and organize electrical wires. Inside the box, you'll find terminal blocks, which serve as secure connection points where each wire can be individually connected. They are trying to decide which enclosure makes more sense for a real installation: a simple power branch, an outdoor lighting circuit, a field device connection point, or a structured. These boxes can be found in various settings, from urban areas to rural locations, ensuring high-speed internet access for a diverse range of users.



How is the terminal box inside the box



what is a terminal box

Definition of junction box A junction box, also known as a wire box or terminal box, is a closed container used to fix, protect and connect wires and

JB Terminal Boxes 101: Essential Tips and Techniques

JB terminal boxes are invaluable tools for electricians, offering efficiency, convenience, and peace of mind in every installation. By following the tips and



Construction and working principle of terminal box

The working principle of the terminal box is relatively simple. When a wire is connected to a terminal, a conductive path is formed through the metal part of the

Terminal Box vs. Junction Box: The Complete Engineering Guide (2026)

Fundamental Distinction: Terminal boxes utilize structured terminal blocks for organized, accessible connections and frequent maintenance, whereas junction boxes protect permanent wire



Construction and working principle of terminal box

Identification system: For the convenience of identification and management, terminal boxes usually have a labeling or labeling system to indicate the purpose

The Ultimate Guide to Terminal Junction Box Wiring:

Learn how to properly wire terminal junction boxes for electrical connections. Understand the importance of proper wiring techniques, safety precautions, and



FTTx Terminal Box Contents: What's Inside vs. What You Need

FTTx terminal boxes play a vital role in fiber optics, serving as the nexus for connectivity. Understanding what's inside these boxes and recognizing what additional components you might





What is a terminal box

Definition of junction box. A junction box, also known as a wire box or terminal box, is a closed container used to fix, protect and connect wires and

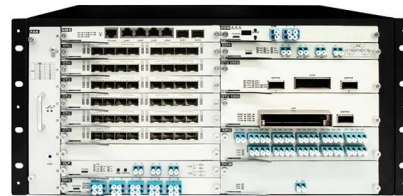


Terminal Escape Walkthrough: Chapters 1-4 , Pro Game

Terminal Escape Room All Chapters Guide There are three different chapters you can complete in the Terminal Escape Room, all of which are

How to Find Your Windows PC's Serial Number

Open Command Prompt or PowerShell and enter "wmic bios get serialnumber" to find your PC's serial number. Windows and System Information



Terminal Box Vs Junction Box

Understand the differences between terminal and junction boxes, including their uses, advantages, disadvantages, and selection criteria.



What is a terminal box

A junction box, also known as a wire box or terminal box, is a closed container used to fix, protect and connect wires and cables. It is usually made of

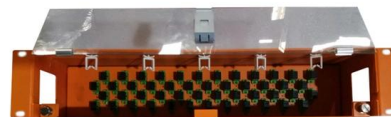


Reddit

Hier sollte eine Beschreibung angezeigt werden, diese Seite lässt dies jedoch nicht zu.

Terminal vs Junction Box: Key Differences Explained

A terminal box is a structured wiring interface, often built around DIN rail hardware and terminal blocks. That difference affects installation speed, wire



6 Terminal Junction Box Wiring Diagram: A Complete

Overall, understanding terminal junction box wiring diagrams is crucial for anyone involved in the installation, maintenance, or repair of electrical systems. It

Terminal boxes



Terminal boxes - simplicity with effectiveness
When it comes down to it, terminal boxes are really just the simplest version of electrical cabinets. In some exceptional cases, however, they are also used



How to Install Linux Inside Windows Using VirtualBox

Using Linux in a virtual machine allows you to try Linux within Windows. This step-by-step guide shows you how to install Linux inside Windows

Terminal Box Vs Junction Box - The Ultimate Comparison

In a Terminal Box, the wiring from the field instruments enter inside through the bottom. Inside it are strips of Terminal Blocks mounted on a mounting



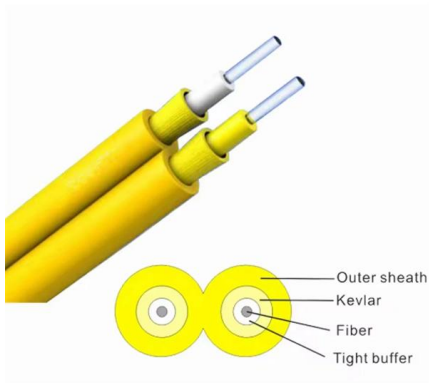
Don't Open a 3-Phase Motor Until You See This! , Star Connection Inside

Ever wondered what's inside the terminal box of a new 3-phase motor? Watch as we unscrew the terminal cover and reveal the hidden components--including termin



What are Terminal Boxes?

First, you need to identify the positive and negative terminals on the box. The positive terminal is usually marked with a plus sign (+), and the negative terminal is usually marked with a minus sign (-).



What Is a Terminal Box (TB) in MEP? A 5-Minute Explainer.

Often a subtle, yet crucial, endpoint device within a building's advanced HVAC system, the Terminal Box serves as the definitive control point, meticulously regulating the conditioned air

Terminal Box Vs Junction Box - The Ultimate Comparison

I know many people tend to confuse electrical terminal box and junction box. Well, this guide will help you understand what these two essential



Terminal and Junction Boxes (Ex d) , Explosion Protection

EJB terminal boxes and junction boxes offer an extended operating temperature range down to -60 °C and can be configured as per customer specification--including different types and quantities of



Terminal Box Vs Junction Box

What Is a Terminal Box? A terminal box is an enclosure used to neatly terminate and organize electrical wires. Inside the box, you'll find terminal



Guide of Fiber Optic Terminal Box

It's well-known as a distribution box when splitters install inside the terminal box. There are two types of distribution boxes: box-type and splice tray

Contact Us

For datasheets, pricing, or custom high-speed optical interconnect solutions, please visit:
<https://www.syropy.com.pl>