

How is power supplied to the primary distribution box





Overview

Electricity is delivered at a frequency of either 50 or 60 Hz, depending on the region. Seen with an oscilloscope, the domestic power supply in North America would look like a sine wave, oscillating between -170 volts and 170 volts, giving an effective voltage of 120 . Many feeders leave substation in concrete ducts and are routed to a nearby pole. From there, it is routed to individual building distribution boxes (secondary distribution boxes), which subsequently supply power to unit-level distribution boxes.



How is power supplied to the primary distribution box



Distribution Boxes: Types and Functions

A distribution boxes acts as the load center and main distributor of electrical power within a building. Also called a distribution board, panel board,

Power Distribution Systems

Distribution substations are nodal points in the distribution network that receive high-voltage power from transmission lines before stepping it down for distribution.



Explore Power Distribution Box Types and Functions

Power distribution boxes are used in commercial and residential buildings and are part of the electrical system, also known as switchboards.

Power Distribution Box Essentials: Functions, Types

A power distribution box electrical captures electricity from the primary power supply and allocates it securely to different electrical circuits in a building



Nagaland News, India News, Northeast News

The Morung Express brings the Latest News, Top Breaking headlines on Politics and Current Affairs in Nagaland India and around the World, Naglaand News, Naga



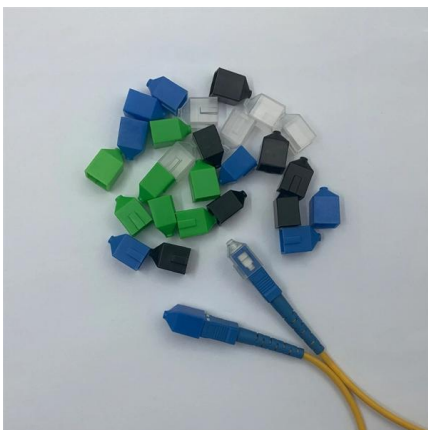
The Meaning and Function of Primary, Secondary, and Tertiary

The terms primary, secondary, and tertiary distribution boxes are relative. Let's make an example for clarity: A newly constructed residential area introduces a 10kV power line to a substation. From the



Power Distribution Boxes Explained Simply

Discover the essentials of a Power Distribution Box--how it works, key types, benefits, and tips to ensure safe, efficient electrical power management.





Distribution Boxes Explained: Types, Functions, and

Learn about distribution boxes, their types, functions, and safety features to ensure efficient and secure electrical power distribution in any building.



The Primary and Secondary distribution in electrical

If the building is big enough or the demand is there, there could be chosen for a main line distribution around the building with the help of

The Complete Guide to Distribution Box: Installation, Types & More

Blog The Complete Guide to Distribution Box: Installation, Types & More By Admin Aug 2, 2025 No Comments # distribution box Introduction Electrical systems power our homes, offices, and



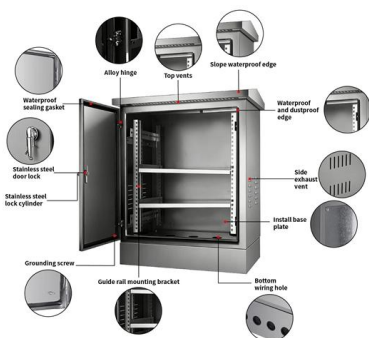
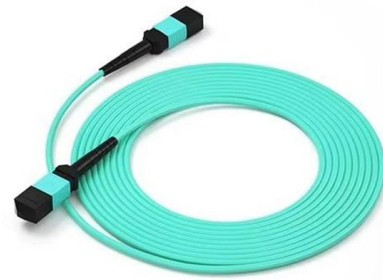
The Meaning and Function of Primary, Secondary, and Tertiary

From the transformer's low-voltage side (0.4kV), power is distributed to a main distribution panel (primary distribution box).



What is the primary distribution grid and what elements

Primary distribution grid: This is the stage of electricity distribution where energy reaches substations to be transformed and distributed at medium voltage to the



Electrical Power Distribution System:

A unipolar DC distribution system, also known as a 2-wire DC system, uses a single conductor to supply electrical power, while the return path is

Power Distribution Boxes Explained Simply

Learn what a power distribution box is, how it works, key components, types, and why it's vital for safe and efficient electrical systems.



Primary and secondary power distribution systems

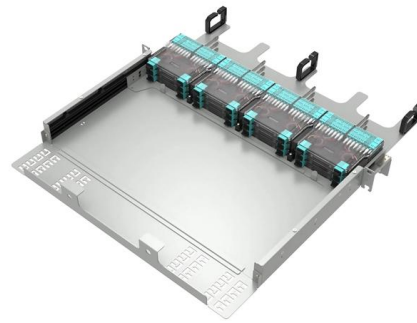
Primary distribution systems Primary distribution systems consist of feeders that deliver power from distribution substations to distribution



Electric power distribution

Overview
Secondary distribution
History
Generation and transmission
Primary distribution
Modern distribution systems
See also
External links

Electricity is delivered at a frequency of either 50 or 60 Hz, depending on the region. It is delivered to domestic customers as single-phase electric power. In some countries as in Europe a three phase supply may be made available for larger properties. Seen with an oscilloscope, the domestic power supply in North America would look like a sine wave, oscillating between -170 volts and 170 volts, giving an effective voltage of 12



Distribution Box: Types and Functions , Axis-Electricals

A distribution box ensures that electrical supply is distributed in the building, also known as a distribution board, panel board, breaker panel, or electric panel. It is

Electric power distribution

Primary distribution lines carry this medium voltage power to distribution transformers located near the customer's premises. Distribution transformers again lower the



Three-Tier Power Distribution System in a Newly Constructed

In a newly constructed residential area, a 10kV power line is introduced into the substation. After stepping down the voltage through the transformer's low-voltage side (0.4kV), power



distribution is



The Ultimate Guide to Distribution Box Types

In any electrical system, the distribution box is the heart and brain, a critical component that safely manages and distributes power from the main source to



Power Distribution Boxes Explained Simply

A power distribution box works like a traffic controller for electricity. It takes in power from the main supply and sends it out to different areas or devices

What does a power distribution box do ?

The main function of the distribution box is to receive power and distribute it to various circuits. It can protect circuits, regulate voltage, and isolate and control



primary distribution system



Single-phase loads are served by distribution transformers with primary windings that are connected between a phase conductor and the neutral. Three-phase loads

Understanding Distribution Boxes: Your Guide to Power

Weatherproof Distribution Boxes These serve specific outdoor purposes, with rain, dust, and extreme temperatures sealed shut, protecting any



The Meaning and Function of Primary, Secondary, and Tertiary

Follows the principle of "one machine, one switch, one RCD, one box, one lock," ensuring no single switch controls multiple devices. This explanation aims to clarify the roles and functions of

CMU School of Computer Science

çç-- bowls èì~ bowls ç¥"æ^ì box ç>'å box ç>'å boxes ç®± boxes æ<³å?» boxing å>½æoe⁻ boxing ç".å© boy å©å boy ç".å < boyfriends ç". boyfriends è?³å° boyhood ç".å© boys ç".ç"Y boys å½çæEUR brac





Understanding Primary Distribution in AC Electrical Power

Role in Power Delivery: Primary distribution transports electrical power at medium voltages from substations to transformers where it is further



Contact Us

For datasheets, pricing, or custom high-speed optical interconnect solutions, please visit:
<https://www.syropy.com.pl>