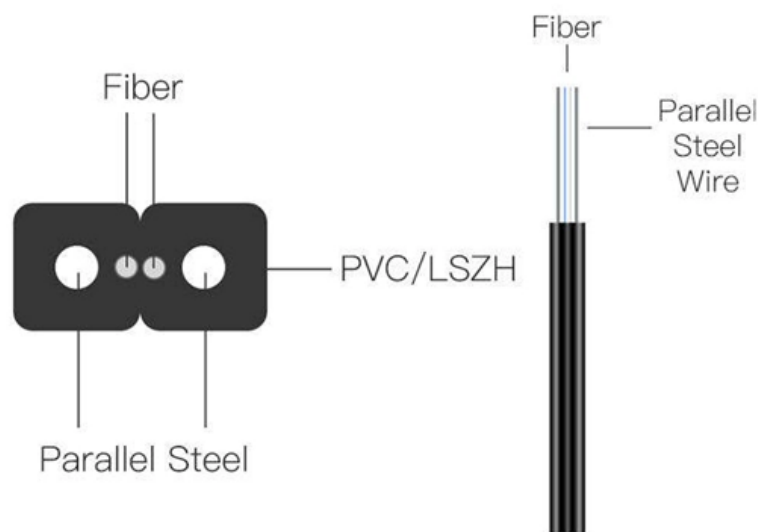


How high should the embedded power distribution box be off the ground





Overview

Due to the long time interval between the embedding of the box and the installation and wiring of the box panel, the box shall be disassembled with the box cover (door) and the panel first, and marked for storage, so as to prevent the electrical components and the box cover (door) from damage or. Choose the right box based on environment (indoor/outdoor), load capacity, and durability. Ensure safe placement: install in dry, accessible areas with good ventilation and at appropriate height (typically ~1. The bottom of the floor mounted cabinet (box) should be 50 ~ 100 mm higher than the ground; The center height of the operating handle is generally 1.



How high should the embedded power distribution box be off the ground



Embedded Installation Of Distribution Box

When the width of the distribution box is more than 500mm, it is required to install concrete lintels on the top of the box during civil construction; when the box width is 300mm or more,

Learn the Rules for Overhead Clearance on Power Lines

For safety, the NEC and NESC have guidelines for height clearances of overhead power lines over streets, sidewalks, alleys, roads, and driveways.



Power Distribution Boxes Explained Simply

Learn what a power distribution box is, how it works, key components, types, and why it's vital for safe and efficient electrical systems.

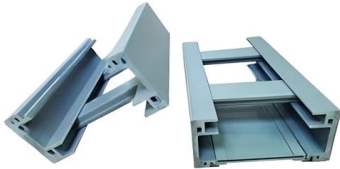
The height requirement of distribution box

The allowable deviation of the perpendicularity of the box is: when the box height is less than 500mm, it shall not be more than 1.5mm; when the box Height is more than 500mm, it shall not



Power dsitribution box installation standard , Anssin

1.The distribution box (as well as switchboard) shall be installed in a safe and dry place easy to operate. When installed, its bottom is generally 1.5 m



Understanding Distribution Boxes: A Comprehensive Guide

A distribution box, also known as a power distribution box or electrical distribution box, is used to distribute electrical power safely to multiple



inside

i) Outdoor substations are subject to dust, rain, storm, extreme heat and theft leading to breakdowns and higher maintenance. During winds, cyclones and storms, the entire distribution system including





Power Distribution Board: Uses, Role & How its Work

Learn about power distribution boards: their uses, role, and how they work to manage electrical power distribution efficiently and safely in various setups.



NEC Working Clearance Requirements: A Visual Guide

For a typical 120/240V residential panel (120 V Voltage-to-ground), the clearance depends on the opposing wall. If it's facing drywall (Condition 1), you need 900

What is the Ideal Installation Height for a Distribution Box

Install a distribution box at 4.5 to 5.5 feet high for safety, accessibility, and compliance. This height ensures easy use and protection from hazards.



Power Distribution PCBs in Smart Grids: Design and

Power Distribution PCBs are indispensable in the development of smart grids, enabling efficient, reliable, and scalable power management. By



Matters needing attention in the installation of distribution box!

The bottom of the floor mounted cabinet (box) should be 50 ~ 100 mm higher than the ground; The center height of the operating handle is generally 1.2-1.5m; There are no obstacles within the range



Installation requirements for distribution boxes

Distribution boxes shall be made of non-combustible materials; open distribution boards may be installed in production places and offices with low electric shock risk; enclosed cabinets shall

What is the Ideal Installation Height for a Distribution Box

General Guidelines for the Installation of Distribution Box Standard Height Recommendations Follow height rules when installing a distribution box. Wall



Wall-Mounted vs. Floor-Mounted Distribution Boxes:

Compare wall-mounted vs. floor-mounted distribution boxes. Learn their key differences, uses, pros & cons to choose the right one for your space

Key Points Of Installation And Collocation



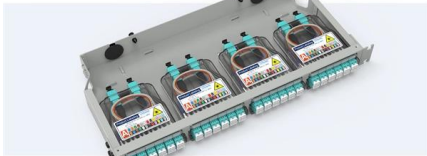
Of Distribution Box In

The vertical distance between the bottom surface of the fixed distribution box and switch box and the ground shall be greater than 1.3m, less than 1.5m The vertical distance between the bottom of of



Pre-Terminated Patch Panel

- Multi-application support
- Flexible configuratvion
- Modular design



Cable Gland Plug
28mm Cable Gland Plug



MPO LC up to 16 cores
MPO direct connector 48 ports



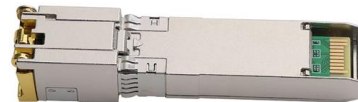
Mounting Bracket
Semi-open mounting holes

U.S. News: Latest Breaking Stories and Video on

Get the latest news headlines and top stories from NBCNews . Find videos and news articles on the latest stories in the US.

The installation requirements for the distribution box

The bottom edge of the distribution box is usually between 1.5 meters and 1.8 meters above the ground, which is convenient for operation and



Requirements And Specifications For Installation Of

Wiring specifications?: The power should be turned off during wiring to ensure safety. Use high-temperature resistant copper core wire, and the cross





"How High to Mount an Electrical Panel: Guidelines and Safety Protocols"

According to NEC 110.26, sufficient working clearance is mandatory around electrical equipment, including breaker boxes. A



Safe Clearances for Electrical Equipment: Working

Height clearance: The minimum headroom in front of the equipment is 6½ feet, or the height of the equipment itself, whichever is greater. At no point can this be less

Power Distribution Boxes Explained Simply

Discover the essentials of a Power Distribution Box--how it works, key types, benefits, and tips to ensure safe, efficient electrical power management.



Grounding System Installation Standards for Distribution Boxes and

Hey there! If you're working with electrical systems, you know that grounding isn't just some bureaucratic requirement--it's literally the difference between a safe, functional system and a potential disaster.

How far off the floor should my circuit breaker box be? I'm changing from a 100 to a 200 amp. The lead in wires are underground and come into the bottom of box making them too short to



Electrical Panel Mounting Requirements (Dictated by the

Particularly, the electrical rule book states that a panel must be installed no less than four feet off the floor. In the same vein, the height of the

Grounding Practices in Power Distribution Systems

The installation of grounding methods for transmission lines is absolutely necessary in order to guarantee the safety, dependability, and effectiveness of power



Power Distribution Systems

A power distribution system's ultimate purpose is to supply electricity to end consumers while maintaining a high level of reliability and quality. Power reliability



Contact Us

For datasheets, pricing, or custom high-speed optical interconnect solutions,
please visit:

<https://www.syropy.com.pl>