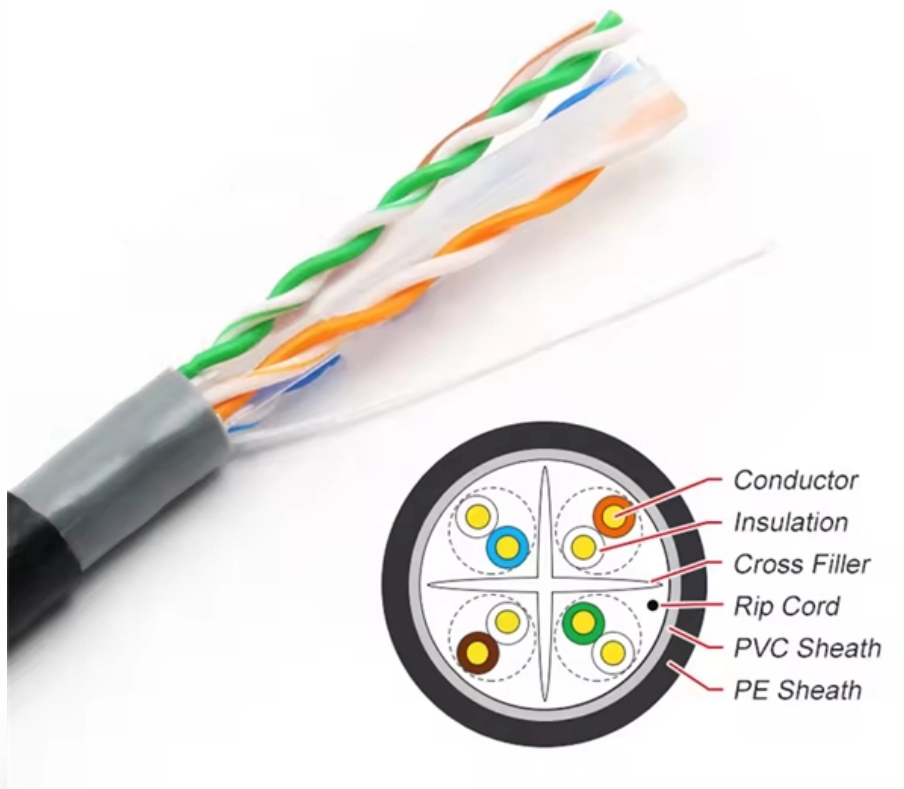


# How high is a wall-mounted optical distribution box from the ground





## Overview

---

A fiber distribution box (FDB) is a passive enclosure that provides secure splicing, termination, and distribution of optical fibers. It typically contains splice trays, adapters, and cable routing components to manage fiber connections. Determine the installation position: - Determine the installation position of the optical fiber distribution box based on the.



## How high is a wall-mounted optical distribution box from the ground

---



### WFPA WALL MOUNT FIBER DISTRIBUTION BOX

LITECH WFPA series Wall Mount Fiber Distribution Box provides an excellent enclosure for patching, splicing and storing fiber optic terminations. These boxes

### Wall-Mounted vs. Floor-Mounted Distribution Boxes:

Compare wall-mounted vs. floor-mounted distribution boxes. Learn their key differences, uses, pros & cons to choose the right one for your space

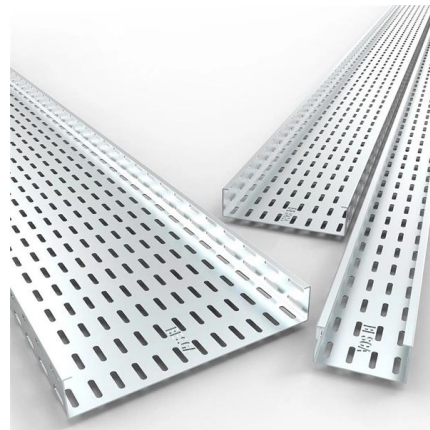


### Wall Mount Distribution

Plugsters wall mount optical termination enclosures and distribution boxes include solutions for patch cable interconnection or a combination of splicing and

### Main panel minimum height from floor?

What's the minimum height requirement for a main distribution panel. I don't believe there is one in the code but you can narrate safety concerns, Steve.



### Optical Fiber Distribution Box , Wall Mount Fiber Solution

Capable of supporting up to 32 fiber ports, the FDB optical fiber distribution box features a protective enclosure with an anti-theft locking mechanism. The internal

### How to install optical fiber distribution box?

- Determine the installation position of the optical fiber distribution box based on the design document or actual requirements. The location should be in a dry, ventilated, and anti-corrosion place, and the



### Product Catalog



### 2021 Ultimate Guide of the Fiber Distribution Box

A fiber optic distribution box is a wall-mounted or pole-mounted box with or without a splitter, for indoor and outdoor application. It is used in the FTTH



### What is the Ideal Installation Height for a Distribution Box

Wall-mounted boxes should be 4.5 to 5.5 feet high. This height makes it easy to reach without bending or stretching. Outdoor boxes need to be at least 3 feet



### CT4000 IG

All Leviton Warranty Terms & Conditions apply. The Leviton HDF3168 Fiber Distribution System is an optical distribution frame that is designed for the high-density applications in the Main Distribution

### Wall Mounted Enclosure, ODB Series 100A Spec Sheet

PPC's Optical Distribution Box (ODB) Series 100A is a compact, robust, outdoor-rated wall mount enclosure designed for FTTH networks in single dwelling, multi-dwelling and multi-tenant applications



### Wall Mounted Optical Fiber Distribution Boxes for FTTH

FTTH Optical Fiber Distribution Boxes are available for the distribution and terminal connection for various kinds of optical fiber system, Some are used for indoor



## Optical distribution frames and patch panels

Supporting more fiber with lower cost and higher flexibility, Technetix offers a variety of wall, floor and rack-mounted optical distribution frames (ODF) and patch panels.



### What is the installation height of distribution box?

Household distribution boxes can be installed on the ground or on the wall. Ground-mounted foundations should be 50 to 100 mm above ground level. When flused installed in the wall,

### What is the installation height of distribution box?

The height of the bottom of the box should not be less than 1.0m from the ground, and measures should be taken to prevent climbing. All the distribution boxes should be good protected



### 24 Ports Wall Mounted Fiber Splitter Distribution Box

Description This outdoor 24 ports fiber distribution box provides a protected termination point for feeder cable to connect with drop cable in FTTH and FTTx

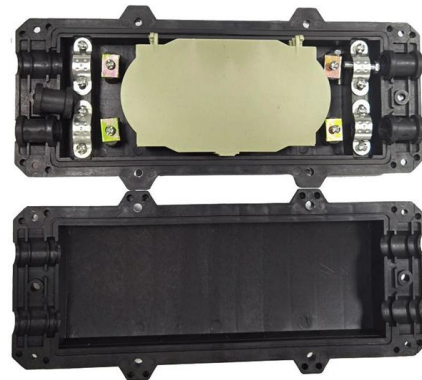


### F2H-ODB-B Series Indoor Optical



## Distribution Box

F2H-ODB-B Series Optical Distribution Box provides a high density wall mounted solution for fiber optic networks, which aims to provide and manage fiber distribution in a limited space.



## Optical Fiber Distribution Box , Wall Mount Fiber Solution

Optical fiber distribution box offers secure, organized fiber management with wall mount design. Ideal for FTTH, LAN, and telecom network setups.

## All you need to know about installing fiber to buildings

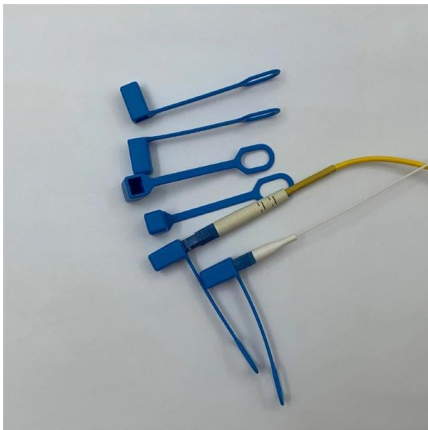
Fiber optic networks allow transmission distances of hundreds of kilometers and have an almost infinite capacity. With smart fiber installation techniques, fiber optic networks can also be built at a



## Understanding Fiber Optic Junction Boxes: A Comprehensive

In the fast-paced world of telecommunications, data transmission has become a critical aspect of our daily lives. Fiber

How far off the floor should my circuit breaker box be? I'm changing from a 100 to a 200 amp. The lead in wires are underground and come into the bottom of box making them too short to



**Optical Distribution Frames/Patch Panel**

Optical Distribution Frames/Patch Panel Vladimir Grozdanovic An optical Distribution Frame (ODF) or patch panel is the starting point for optical cables, most commonly found in rack cabinets in Head

**A Guide to LED Wall Pack Light Installation Height and**

For large areas like parking lots, loading docks, or warehouses, mount LED wall pack lights between 15 to 25 feet above the ground. This height ensures



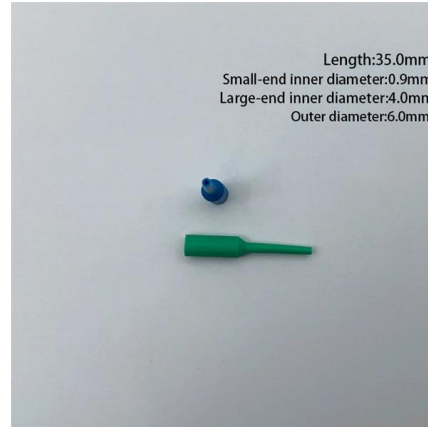
**How High to Mount a TV in the Home**

How high should a TV be mounted? What's the best viewing angle? What's the ideal TV viewing distance? Flat panel, flat screen wall mounting.



### How High Should a TV Be Mounted?

How High Should You Mount Your TV? For the best viewing experience, experts recommend you should mount your TV at eye level while

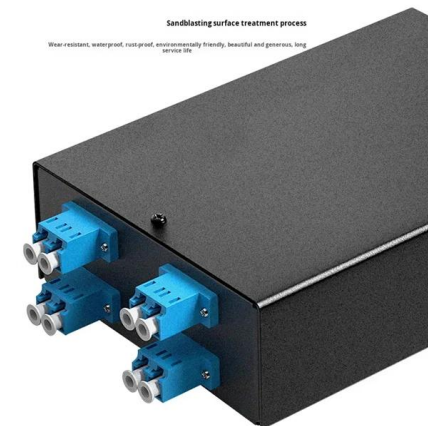


### How to Choose the Right Fiber Distribution Box for

Explore key factors in selecting a fiber distribution box (FDB) including capacity, materials, IP ratings, and deployment scenarios. Ideal for FTTH, PON,

### How to Set Standard Outlet and Light Switch Heights

Learn how to set standard light switch and outlet heights from floors, countertops, and more using these valuable tips.



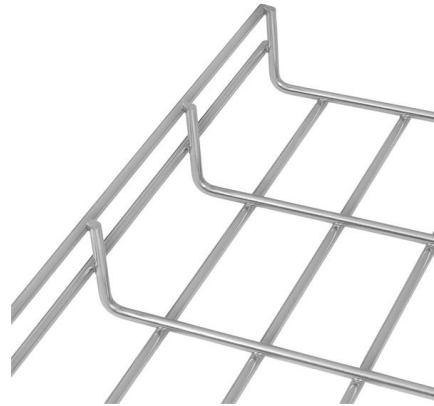
### FWB Fiber Distribution Box Wall-Mounted Type-AOA Tech

Available for the small capacity communication system and wall mounting. The cabinet is composed of two parts: one links with optical cables for fusion



## FTB Wall Mount Data Sheet

Designed for FTTx applications, this small-sized unit ensures flexible and reliable organization of optical fibers from one or multiple cables, along with optical splitter assemblies. It provides a consistent and



## Integrated wiring fiber optic distribution box installation tutorial

The optical fiber distribution box allows people to easily access the optical fibers in the box, and can well protect the optical fibers. In addition, the drawer structure also facilitates high

## Contact Us

---

For datasheets, pricing, or custom high-speed optical interconnect solutions, please visit:  
<https://www.syropy.com.pl>