

How far should the cable tray fixing bracket be





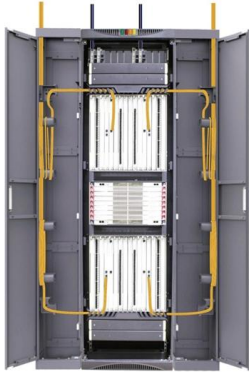
Overview

Typically, brackets should be spaced 4 to 5 feet apart for standard cable trays. Can I use the same mounting options for wire mesh baskets and cable trays?

Although BS 7671 touches on the subject of cable supports, it does not detail specifically what these support distances should be. 8 (Other Mechanical Stresses (AJ)) in that document provides requirements for cable support. Proper installation can significantly reduce electromagnetic interference, prevent fire hazards, and improve overall efficiency. The cable support lengths and fittings can basically be designed as cable trays, cable ladders or mesh cable trays, in which cables are routed.



How far should the cable tray fixing bracket be



Cable Tray Support Spacing: Key Guidelines Explained

The NEC requires that cable trays must be supported by members at an interval specified by the cable tray manufacturer, but not more than 5 feet for horizontal runs to support the weight of

Cable Tray Support Spacing: Key Guidelines Explained

Understanding Cable Tray Systems Cable trays are used for supporting insulated electrical cables for power and communication applications.



Cable Fixing Distances , Horizontal & Vertical Gaps

Unicrimp explains required distances between cable fixings, helping you achieve compliant horizontal and vertical spacing in every type of installation.



Cable Support Distances

Although BS 7671 touches on the subject of cable supports, it does not detail specifically what these support distances should be. Section 522.8 (Other Mechanical Stresses (A)) in that document



STAINLESS STEEL WIRE MESH

Long-lasting and durable

Comprehensive specifications

Customized non-standard products



How do I mount a cable tray to the wall and floor using an end bracket

The end of the cable tray is attached to the wall or the floor with two end brackets (RÄF). The end bracket is fixed to the shelf using the screw set included with the end bracket.

Technical Guidelines for Cable Tray Installation and

- 1. Route Planning and Layout Principles
Coordinate with Building Structure: Cable tray routing should align with architectural design, avoiding unnecessary



Cable Support Distances

Cable Support Distances Although BS 7671 touches on the subject of cable supports, it does not detail specifically what these support distances should be. Section 522.8 (Other Mechanical Stresses (AJ))





CABLE TRAYS GENERAL INFORMATION AND

Cable tray systems are to be installed so they are accessible. If possible 300mm minimum should be left above or between installed systems to allow for cable

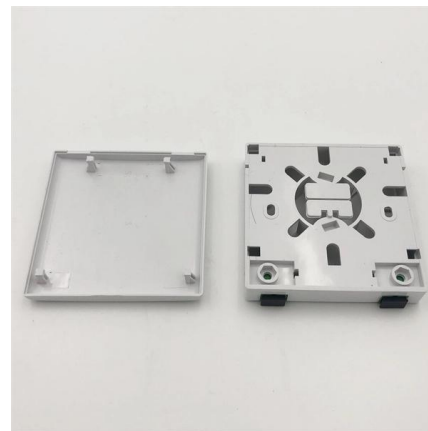


Guide to cable support systems

The mesh cable trays are suitable for the installation of power cables and cables in various areas of application. The grid spacings mean that cables can be inserted and run out in various directions.

Best Practice Guide to Cable Ladder and Cable Tray Systems

Cable ladders and cable trays should be mounted far enough off the floor or roof to allow the cables to exit through the bottom of the cable ladder or cable tray.



Best Practices for Installing Cables in Trays

Quick Installation Checklist (Key Steps) Cable tray cable installation generally follows these steps: Inspect cables before



Cable Tray Technical Guide A practical guide to product selection and

SOLID-BOTTOM CABLE TRAY Providing additional cable protection, solid-bottom cable tray is sometimes preferred to support and protect numerous small instrumentation and control cables.



Best Practice Guide to Cable Ladder and Cable Tray

Cable ladder and cable tray systems The following recommendations are intended to be a practical guide to ensure the safe and proper installation of

Product Advice: Bracket Spacing Considerations

Traditionally, it has been recommended to install brackets approximately every 1 to 1.5 meters along the length of the cable tray. However, this guideline isn't set in stone. There are factors to consider when



Cable fixing and the 18th Edition IET Wiring Regulations

When fixing cables to exposed horizontal surfaces, the spacing of metal fixings should be approximately every 300mm. For vertical running cables

Mastering Cable Tray Installation , Step-by-



Step Guide for a Seamless

Learn how to install cable trays correctly. Get the ultimate step-by-step guide on setting up a seamless and reliable cable management system.



Best Fixing and Mounting Options for Cable Trays , CMW

Regarding cable management, the fixing and mounting you choose for your cable trays can make or break your setup. Whether you're managing voice, data, or electrical cables, ensuring



CABLE TRAY SYSTEMS GUIDE

The design and cost of the cable tray is greatly affected by this designation. In order to determine the most appropriate and economical system, a class should be selected that reflects the actual total



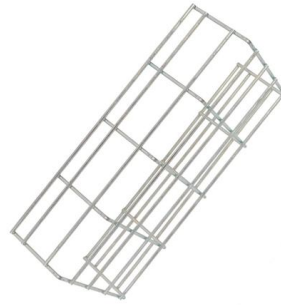
Best Practice Guide to Cable Ladder and Cable Tray Systems

This guide covers cable ladder systems, cable tray systems, channel support systems and associated supports intended for the support and accommodation of cables and possibly other electrical



Cable Tray Installation

Learn everything about cable tray installation with our complete guide. Discover types, steps, and safety tips for efficient electrical cable management.



Best practice guide to cable ladder and cable tray

Cable ladder and cable tray systems The following recommendations are intended to be a practical guide to ensure the safe and proper installation of



Beama Best Practice Guide , Installation Of The System , Cable

2.2 Structural characteristics When considering the installation of the cable supports system it is imperative to avoid the cutting or drilling of structural building members without the approval of the



A Guide to Installing and Supporting Electrical Cable Trays

Cable Tray Support Span: The distance between supports is a critical calculation. The cable tray support span must be determined based on the manufacturer's





Cable Tray Spacing Standards for Installation and Safety

Discover the essential cable tray spacing requirements for safe and efficient installation. Learn key standards, horizontal and vertical spacing, and more.



Cable Tray Installation Guidelines , PDF , Galvanization

The document outlines steps for laying cables, including installing supports, fixing the tray, laying cables with proper spacing, and tying them with cable ties.

Contact Us

For datasheets, pricing, or custom high-speed optical interconnect solutions, please visit:
<https://www.syropy.com.pl>