

# **How are the vertical shaft distribution boxes divided**





## How are the vertical shaft distribution boxes divided

---



### **The Complete Guide to Septic Tank Distribution Boxes ,**

The distribution box serves to evenly divide and distribute the effluent exiting the septic tank to the entire drain field. When wastewater enters the box

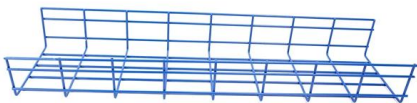
### **Vertical duct distribution in elevator shaft.**

In this study, a wind tunnel test was conducted to determine the real wind pressure distribution on a high-rise building in northern China.



### **Design Options For HVAC Distribution System**

Distribution components convey a heating or cooling medium from source location service generators to portions of a building that require conditioning. Delivery components serve as an interface between



### **What are the classifications of distribution boxes?**

(4) Power and lighting distribution control box. Most of them are closed vertical installation. Due to different use occasions, the protection level of the shell is also



### **VERTICAL SHAFT BRICK KILN**

The fired bricks are unloaded from the bottom of the shaft. The shaft itself can be divided into three distinct sections.

### **Design Options for HVAC Distribution Systems**

There are several choices for air distribution, each satisfying the HVAC objectives with different degrees of success. The best design will consider the pertinent architectural for HVAC Distribution Systems -



### **Distribution Box: Types and Functions , Axis-Electricals**

As a component of an electrical system: it divides electrical power into subsidiary circuits and provides a protective fuse or circuit breaker for each circuit. A



## Complete Guide For Distribution Boxes Types

Distribution boxes, also known as electrical distribution boards or panels, are pivotal components in electrical systems, ensuring the safe and organized distribution of



### Understanding Distribution Boxes: Your Guide to Power

Weatherproof Distribution Boxes These serve specific outdoor purposes, with rain, dust, and extreme temperatures sealed shut, protecting any



### Vertical Shaft, Types and Functions of , Springer Nature Link

The section of the vertical shaft is mainly circular, because a circular shaft can withstand greater ground pressure and has a long service life. The diameter of shafts in China is generally 3-8 m. With the



### Optimizing HVAC Vertical Shafts in Multi-Story Buildings

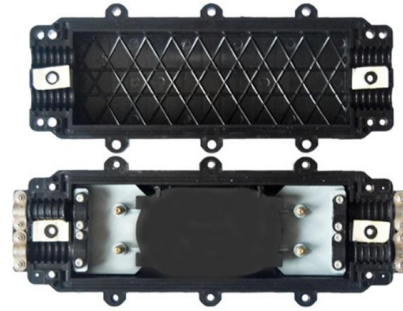
From a design perspective, vertical duct shafts with an aspect ratio between 2:1 and 4:1 are generally more manageable and efficient to develop





## A Definitive Guide To Distribution Boxes

The distribution box acts as the center of power distribution, distributing electricity to all connected devices. A distribution box, also known as a distribution board, panel board, breaker



## Understanding Distribution Boxes: A Comprehensive Guide

A distribution box, also known as a power distribution box or electrical distribution box, is used to distribute electrical power safely to multiple

## Modern practice for LV/MV substation and power

Modern Practice for Buildings In the present era, the presence of reliable and uninterrupted electricity is commonly assumed in the majority of



## Distribution Boxes: Types and Functions

Learn what an electrical distribution box (DB/distribution board) is, its main components (MCB/RCCB/RCBO, SPD, busbar) and common types.



## Two Output Bevel Gear Boxes for Differential Drives: The Solution for

Especially in synchronous belt drives in logistics, reliable power distribution through such gear boxes with two output shafts is essential for plant efficiency. Modern designs from ATEK for two-output



## Facilities Instructions, Standards, and Techniques Volume 2-1

The block is keyed to the shaft with one or more axial keys and held onto the shaft with a split radial key. A solid keeper is usually placed over the radial keys to hold them in place.

## Transmission Shaft

10.2.2.11 Transmission shafts Shafts used in power transmissions will invariably be either solid or thick-walled tubes. In gearboxes and similar assemblies, the shafts will be comparatively short and the



## Electrical Riser Diagram Explained , Brandon Electric

These diagrams visually represent how electrical wiring and power are distributed vertically within a building, offering key insights for electrical

## Distribution Boxes Explained: Types,



## Functions, and

Learn about distribution boxes, their types, functions, and safety features to ensure efficient and secure electrical power distribution in any building.



## ITA

The ITA general Assembly approved the proposal for establishing Working Group 23 on «Design and Construction of Shafts» in May 2019 at the World Tunnelling Congress in Naples. Following the first

## Distribution Inside Large Buildings

In large buildings the type of distribution depends on the building type, dimension, the length of supply cables, and the loads. The distribution system can be divided in to: The vertical supply system (rising



## Power Distribution Boxes Explained Simply

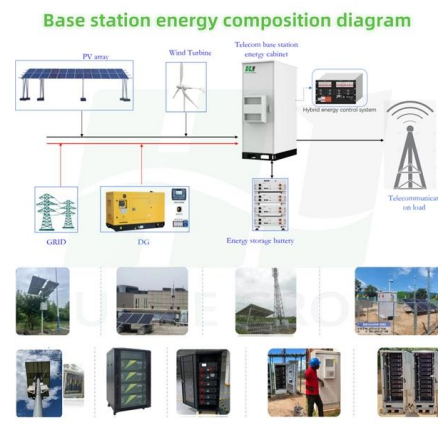
Learn what a power distribution box is, how it works, key components, types, and why it's vital for safe and efficient electrical systems.

## In-Building Riser in Construction: A Comprehensive Guide

In the field of construction, in-building risers are



vital components of the building's infrastructure. These vertical shafts, or conduits, carry various utilities--such as water, gas, electrical



### Vertical Shaft, Types and Functions of , Springer Nature Link

There are exposed shafts and blind shafts, generally with a circular section. A vertical shaft with the pithead directly leading to the ground is called an exposed shaft, and a shaft with the pithead

### Vertical Shaft, Types and Functions of , Springer Nature Link

According to the hoisting container equipped in the shaft, the shafts are divided into cage shafts, skip shafts, and combined shafts.



### Mesh door/glass door optional



Sp-601 glass door

Sp-602 mesh door

### Power distribution inside large buildings , EEP

The vertical supply system are implemented in several ways, some



## Power Distribution Boxes Explained Simply

Discover the essentials of a Power Distribution Box--how it works, key types, benefits, and tips to ensure safe, efficient electrical power management.



## What is the Internal Structure of The Distribution Box

Learn about the internal structure of a distribution box, its components, functions, and key types. Understand its role in electrical systems

## Modern practice for LV/MV substation and power

These components are all connected to an LV Panel, which is divided into essential and non-essential portions. The substation is managed by a PLC



## Contact Us

---

For datasheets, pricing, or custom high-speed optical interconnect solutions, please visit:  
<https://www.syropy.com.pl>