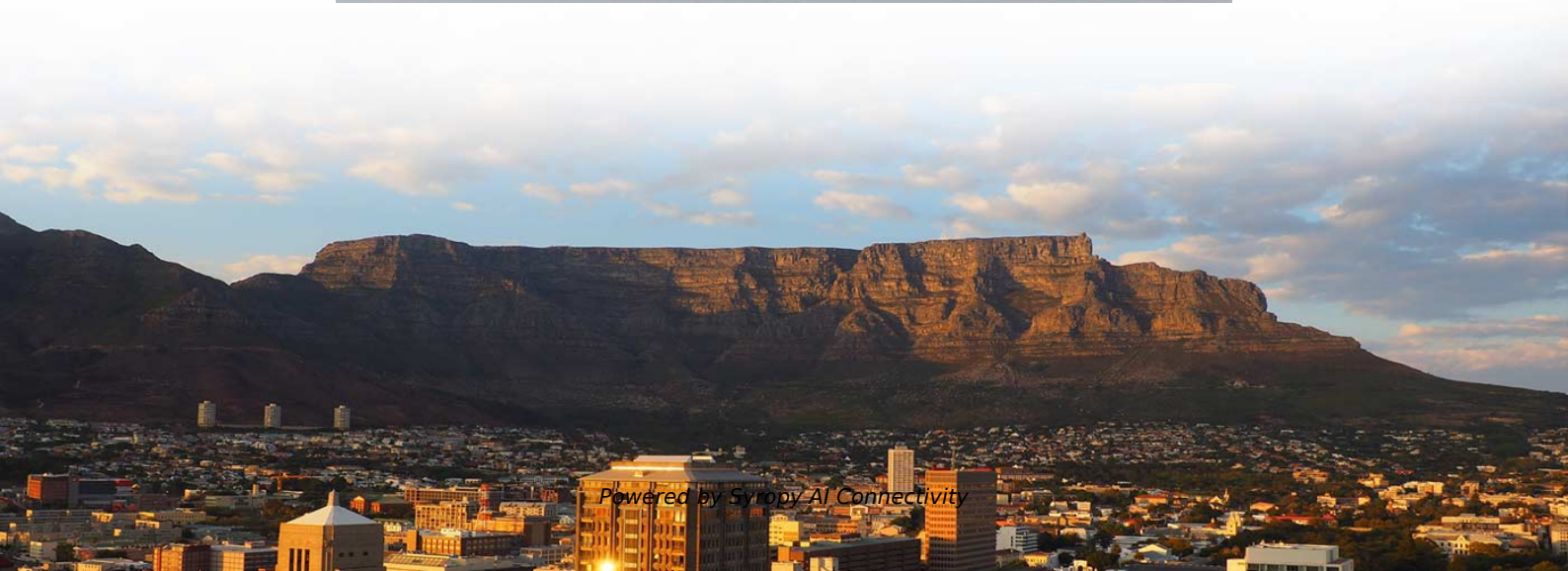


Household relay protection switch





Household relay protection switch



What Is a Protection Relay and What Does It Used for

A well-chosen distribution box ensures the safety and efficiency of your household electrical system. This article guides you through selecting a

Types of Protective Relays

This article covers various types of protective relays, such as overcurrent, directional, and differential relays, highlighting their operating characteristics and applications



Protective Relay: Working, Types, and Applications

Learn about protective relays, their working principle, types, and applications in power systems. Discover how relays protect transformers,



How Relays Work in Circuits: From Home Appliances to Evs

Understanding Relays: The Basics Relays are fundamental components in the world of electronics and electrical engineering, serving as crucial switches that control circuits. At their core,



Relay Fundamentals: A Comprehensive Guide for

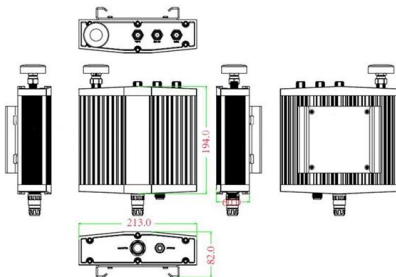
Relays are generally used to control higher loads with a smaller current on the primary side such as sensors, switches, or a PLC input. If you

Relay Switch 101: Everything You Need to Know About

Relay Switch devices are not new inventions, but they remain essential for automating and remote controlling of various modern devices.



Mechanical drawing



Types of Electrical Relays: Guide to EMR, SSR, Reed

This guide explains the main categories--from basic electromechanical relays to modern solid-state and protective types--so you can



Protection Relay : Circuit, Working, Types, Codes & Its Uses

What is a Protection Relay? A relay that is used to detect the faults of the circuit breaker and start the circuit breaker operation to disconnect the system's faulty element is known as a

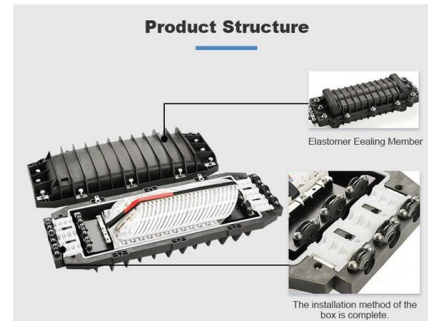


Types of Electrical Protection Relays or Protective Relays

Protective relays can be categorized based on their

Wiring Electrical Control Relays

Electrical Relay Construction and Purpose - Part 4
This section explains how protective relays are used to monitor the current, voltage, frequency and more in the electrical power industry.
Electrical Relay



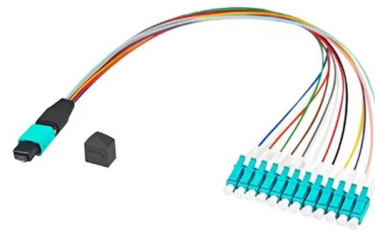
Protective Relay Basics

Traditionally, protective relays were electromechanical devices utilizing induction disk, coils, contacts, and solenoid elements to determine protective characteristics.



VONVOFF Wireless Remote

VONVOFF 110V/30A high current wireless remote control switch is a heavy duty wireless control kit specially designed for high current devices has built-in 40A



Understanding Protective Relays in Electrical Power Systems -

Explore the world of protective relays and their vital role in ensuring the safety and reliability of electrical power systems.

Voltage Protection Relay: Working Principle and Functions

A voltage protection relay is an essential device to keep electrical systems running efficiently and safely. These devices are designed to suit many unique situations.



Different Types Of Relays And Their Applications

Introduction Relays are essential components in electrical and electronic systems, serving as switches that control high-power circuits using low-power signals.



A Complete Guide to Relays: Understanding What They

Relays are indispensable components in modern electronics, often working behind the scenes to control various electrical operations. From industrial



Relays in Home Appliances: What They Do and How

Learn how relays work in appliances to switch circuits, control power, and keep your home devices running smoothly.

Protective Relay : Working, Types, Circuit & Its

There are different types of relays available and each type is used based on the requirement. So this article discusses an overview of a protective relay or



How Relays Work

How relays work. In this video we look at how relays work, what are relays used for, different types of relay, double pole, single pole, phototransistor, sol

Relay



A relay Electromechanical relay principle
Electromechanical relay schematic showing a control coil, four pairs of normally open and one pair of normally closed contacts

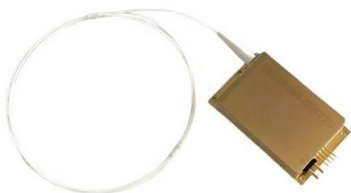
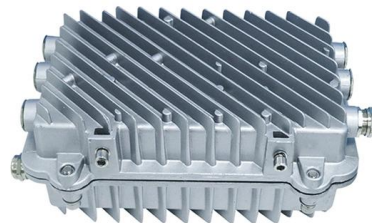


Protection Relay:Types, wiring diagram and working principle.

Protection relay is an electromechanical monitoring safety device which senses fault and provide trip signal to the breaker as per set value in LT and HT panel.

What is a relay, its function, types and relay wiring

A relay is an electrical switch that can be activated by a low-power signal. Learn more about what is a relay and their many applications here!



How do relays work?

How relays work Here are two simple animations illustrating how relays use one circuit to switch on a second circuit. When power flows through



What Is a Protection Relay and What Does It Used for

Once a protection relay detects a fault, it will operate automatically and will close down the breaker's trip circuit. This way the faulty circuit will be



Introduction to Protective Relaying , Electric Power

Introduction to Protective Relaying What are Protective Relays, or Protection Relays? Protective relays are used in industrial power generation and supply

Contact Us

For datasheets, pricing, or custom high-speed optical interconnect solutions, please visit:
<https://www.syropy.com.pl>