

Hot aisle 47U in the computer room





Overview

The hot and cold aisles in the data center are part of an energy-efficient layout for server racks and other computing equipment.



Hot aisle 47U in the computer room



Hot Aisle vs. Cold Aisle Containment for Data Centers

Hot Aisle Containment vs. Cold Aisle Containment The goal of hot and cold aisle containment is very similar, even if they are entirely different

Hot and Cold Aisle Containment: What You Need to Know

Hot aisle containment systems isolate the hot aisle using a similar enclosure system to that of a cold aisle with a sealed door for access. This



Hot Aisle Containment vs. Cold Aisle Containment:

Conclusion If a computer room was configured in such a way that either hot aisle containment or cold aisle containment could be implemented, with

GUIDE TO ICT - SERVER ROOM ENERGY EFFICIEN

mentation of hot aisle/cold aisle containment. The hot aisle/cold aisle approach involves lining up server racks in alternating rows with cold air intakes facing one way and hot air exhausts facing the other.

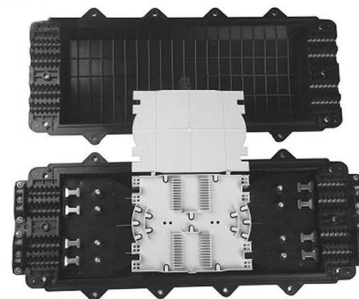


Data Center Design: Hot Aisle & Cold Aisle - Length

Efficient airflow management in data centers relies heavily on proper Hot Aisle and Cold Aisle configurations. To maintain thermal performance, equipment

The pros and cons of hot and cold aisle containment

With data centres and computer server rooms becoming larger and more numerous companies are often faced with a decision: what is most suitable for their



Confined Hot Aisle , Atos Racks

Confined Hot Alley Containment solution for computer rooms with high-density equipment. Heated air leaving the servers is blown into the Confined Hot Aisle. -





Hot/Cold Aisle Containment , Data Center Containment

Then observe the unique layout and architecture of each computer room to discover conditions that make hot aisle or cold aisle containment preferable. With



Why should the computer room design hot and cold aisles?

The airflow organization in the equipment room completes the isolation of cold and hot aisles, which maximizes energy efficiency and achieves the purpose of

Data Center Aisle Containment

What is hot aisle containment? With hot aisle architecture, the supply air is directed onto the front of the racks and the hot discharge air ducted back to the PAC units



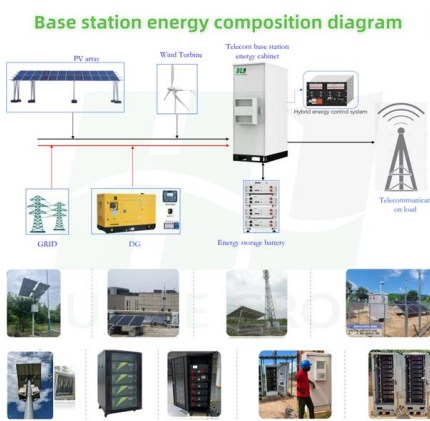
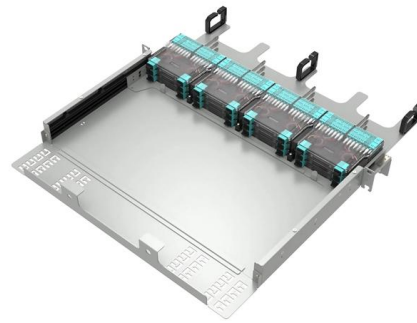
Aisle Containment

Open Aisle Containment Traditional open aisle data centres use perimeter PAC (precision air conditioning) or CRAC (computer room air conditioning) units to



How to Make the Right Choice? Comparison between the Enclosed

First, after choosing to arrange the enclosed hot aisle, we regard the area in the computer room except the racks as a closed container (M1), and the heat dissipation amount (Q1) of a single

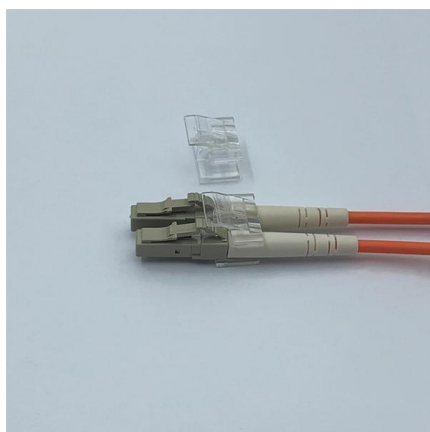
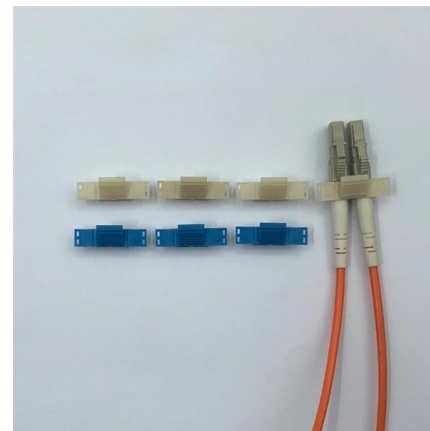


Aisle Containment for Server Rooms and Data Centers

Aisle Containment Enhance cooling efficiency and reduce energy costs with aisle containment solutions from Server Racks Online. Designed for data centers and IT environments, our hot aisle and cold

Move to a Hot Aisle/Cold Aisle Layout

This will not work in a hot aisle/cold aisle configuration because the return air has been concentrated in hot aisles and its temperature is therefore substantially higher.



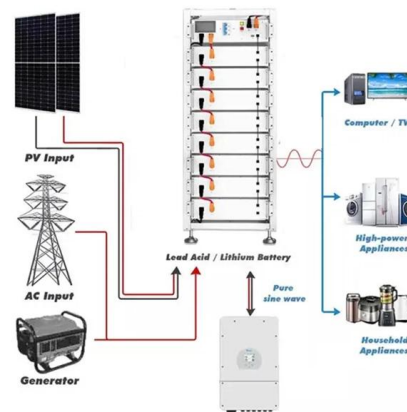
Reducing Bypass Airflow Is Essential for Eliminating Computer Room Hot

Bypass airflow occurs through unsealed cable cutout openings and mislocated perforated tiles placed in the hot aisle. Based on a 10,000 ft² (930 m²) computer room, bypass airflow averaged 80,000 cubic



A Guide to Hot and Cold Aisle Containment for Optimizing Server Room

Training and Awareness The hot and cold aisle strategy is a proven method for improving cooling efficiency and reducing energy consumption in data centers. By carefully planning the layout of

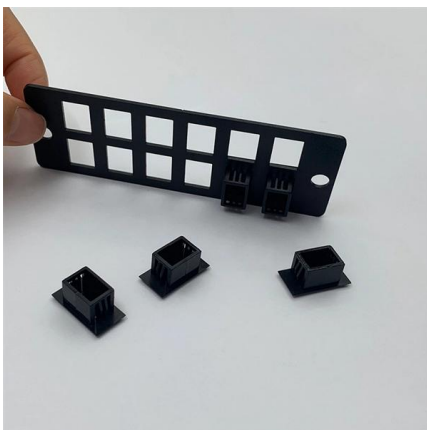


Thermal Solutions for Servers Part 1

For server rooms, laying out hot aisles in between cold aisles has helped solve many heat issues and remains in common use. Typically, air from

Hot Aisle Containment , Data Center Asia

By containing the hot aisle, the hot and cold air streams are fully separated. This allows for hot aisle containment to increase the cooling efficiency of the data



Hot and Cold Aisle Containment: What You Need to

Aisle containment is a physical means of separating hot (exhaust) and cold (supply) air. It can be accomplished via thoughtful room design, cabinet



Data Center Temperature: Hot And Cold Aisle Containment

Hot and cold aisle containment systems are crucial for data center temperature. Click to learn about airflow, cooling efficiency, and thermal



Hot and Cold Aisle Containment Systems: How They

One of the best ways to protect your servers from overheating is by installing a hot or cold aisle containment system. There are plenty of ways you

Hot/Cold Aisle Containment , Data Center Containment

Hot and cold air containment systems designed to maximize cooling predictability, capacity, and efficiency at the rack, row or room level. Get flexible and cost



47U Racks , 47U Server Cabinets , Server Room Environments

47U Racks and Server Cabinets 47U server racks and floor standing data cabinets from Server Room Environments are one of the largest available and are designed to provide a complete and secure





Impact of Hot and Cold Aisle Containment on Data Center

Cold-aisle containment, although not optimal, may be the best feasible option in these cases. Both hot-aisle and cold-aisle containment provide significant energy savings over traditional uncontained



Hot vs Cold Aisle Containment: 40% Cooling Savings

If data centers were action movies, hot and cold aisle containment would be the unsung heroes, saving the day without getting the glory. While

Hot Aisle Containment Explained

Once the hot air is contained and isolated, it is either exhausted from the data center, or returned to the data center's Computer Room Air Conditioning



Hot Aisle Containment: Enhancing Data Centre Efficiency

By isolating hot exhaust air emitted from server racks, HAC ensures that this hot air returns directly to the computer room air conditioning (CRAC) by funnelling it through an overhead plenum.



Hot and Cold Aisle Containment: What You Need to Know

Choosing the right cooling system for your data center is an important decision. Learn whether hot or cold aisle containment is the better option for your



Hot and Cold Aisle Containment Systems: How They

Hot aisle containment (HAC) and cold aisle containment (CAC) are the most efficient ways of preventing your servers from overheating and these

Contact Us

For datasheets, pricing, or custom high-speed optical interconnect solutions, please visit:
<https://www.syropy.com.pl>