

Horizontal cable trays in the low-voltage electrical shaft leading to the server rack





Horizontal cable trays in the low-voltage electrical shaft leading to

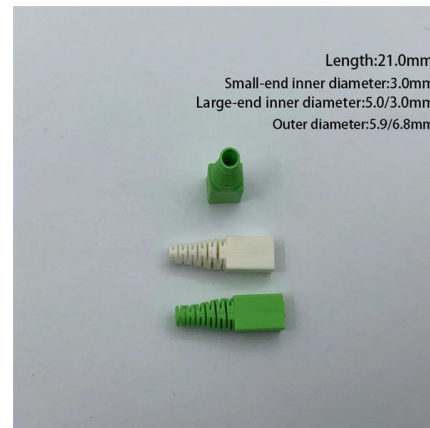


Important design considerations for cable ladder and

Fig 2 shows an example of a steel wire cable tray/basket arrangement with a range of accessories available for site alterations to allow for installation in

A Guide to Installing and Supporting Electrical Cable Trays

A professional guide to installing electrical cable tray systems per NEC Article 392. Covers support, securing cables, and fill calculations.



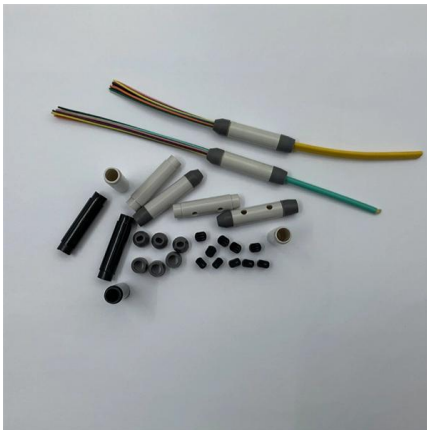
Prevent Fire and Electric Hazards When Cable Trays Used

If not designed and installed properly, wiring inside cable trays may pose hazards such as fire, electric shock, and arc-flash blast events.



Core Principles for Electrical and Instrumentation Cable

In industrial settings, electrical and instrumentation (E& I) cable trays or bridge racks play a critical role in organizing and supporting power, control, and signal cables

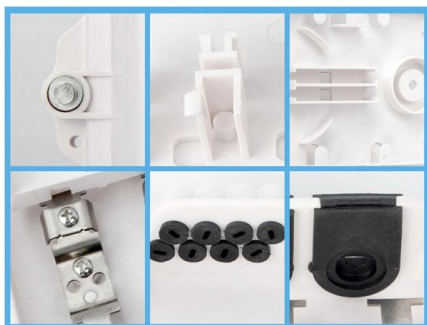
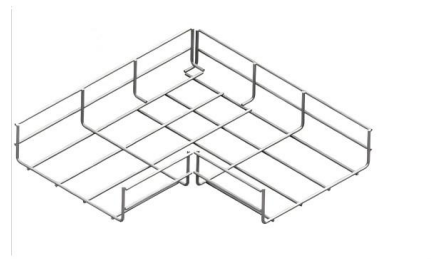


What is a Vertical Cable Tray?

Common Applications: Where You'll Find Them
Vertical cable trays are indispensable in any structure where cables need to move between levels:

CABLE TRAYS, CABLE LADDERS CABLE SUPPORT SYSTEMS& CABLE

A cable tray system is used in building electrical wiring to support insulated electrical wires used for power distribution, control, and communication. Cable trays are often used for cable management in



FactSheet

FactSheet Electrical Safety Hazards of Overloading Cable Trays According to the 2005 National Electrical Code® (NEC), a cable tray system is " unit or assembly of units or sections and



GUIDE CABLE TRAYS TECHNICAL

In accordance with its continuous improvement policy, Legrand reserves the right to change the specifications and illustrations without notice. All illustrations, descriptions and technical information



Cable Tray Design, Layout, and Overall Wiring Planning

Learn about effective Cable Tray Design and Layout for electrical systems. Our guide covers planning, material choice, safety, and maintenance.

Guide to cable support systems

The mesh cable trays are suitable for the installation of power cables and cables in various areas of application. The grid spacings mean that cables can be inserted and run out in various directions.



STAINLESS STEEL WIRE MESH

- Long-lasting and durable
- Comprehensive specifications
- Customized non-standard products



Types Of Cable Trays And Why You Should Use Them

Hutaib Electrical is the leading Manufacturer of cable trays in Pune. we supply various types of cable trays at affordable prices. The expertise of our



Cable Tray Spacing Standards for Installation and Safety

The Importance of Cable Tray Spacing in Electrical Infrastructure Cable tray spacing is a critical aspect of electrical infrastructure, influencing both



Cable tray

ABB designs and manufactures cable tray systems, including perforated tray, cable ladder, channel tray and strut (metal framing), directly from production facilities in

Advancements and Challenges in Power Cable Laying

The laying of power cables is a crucial aspect of developing and maintaining modern electrical infrastructure, which is vital for transmitting



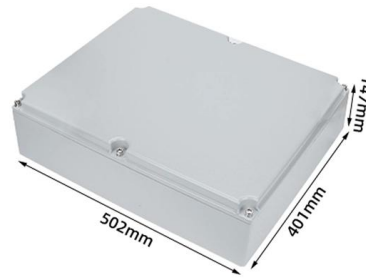
Understanding NEC Article 392

Ultimately, cable trays form the absolute backbone of large-scale electrical distribution networks. By dedicating the time to fully Understanding NEC Article 392, you protect both your



Cable tray manual

INTRODUCTION The B-Line series Cable Tray Manual was produced by our technical staff. We recognize the need for a complete cable tray reference source for electrical engineers and designers.



Best practice guide to cable ladder and cable tray

Cable ladder and cable tray systems The following recommendations are intended to be a practical guide to ensure the safe and proper installation of

A Guide to Installing and Supporting Electrical Cable Trays

This guide covers the critical steps, from selecting the right electrical cable tray and performing accurate cable fill calculations to managing a safe cable pull through



Cable Trays General Installation Animation , EAE Electric

EAE Elektrik Cable Trays General Installation Animation. For more information about the EAE Cable Trays go to <https://link.eaegroup/3TVFB0iEAE> cable duct



B-Line series Cable Tray Design Considerations

Available in 3, 4, and 6-inch widths with ventilated or solid bottoms, channel cable tray is ideal for smaller instrumentation cables and cable tray runs involving a small number of cables.



Cable Tray SHIB NAL

Overloading cable trays can lead to a breakdown of the tray, its connecting points, and/or supports, causing hazards to persons underneath the cable tray and even leading to possible electric shock

NEC Article 392 Guide: Ensuring Compliance for Cable

Master NEC Article 392 with our comprehensive guide. Learn essential cable tray requirements for installation, grounding, and fill capacity to



Method Statement installation of Cable Trays and Ladders

This method statement covers the site installation of the cable tray & ladders and the requirements of checks to be carried out.



Best Practice Guide to Cable Ladder and Cable Tray Systems

This publication is intended as a practical guide for the proper and safe* installation of cable ladder systems, cable tray systems, channel support systems and associated supports.



Cable trays are structural components of a facility's electrical system

The use and installation of cable trays are covered by OSHA in 29 CFR 1910.305(a)(3) and within various provisions of the National Electric Code (NEC). When properly planned, installed, and



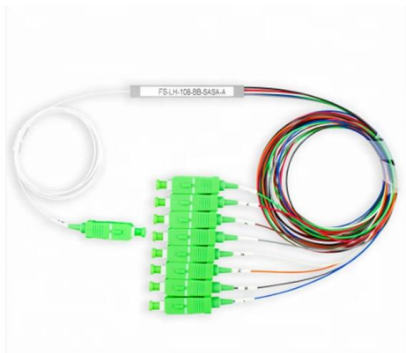
Best Practice Guide to Cable Ladder and Cable Tray Systems

Introduction This publication is intended as a practical guide for the proper and safe* installation of cable ladder systems, cable tray systems, channel support systems and associated supports.



Cable Tray

Our range of components lets you configure a cable tray to route cables through unused space, while keeping them accessible for easy maintenance. Whatever your configuration, your cables are under





Cable Ladders , EAE Electric

Cable Ladders Extra Heavy Duty Cable Ladders are cable management systems with the highest load-bearing strength in their class. These ladders are designed



Contact Us

For datasheets, pricing, or custom high-speed optical interconnect solutions, please visit:
<https://www.syropy.com.pl>