

Horizontal cable tray through-wall treatment





Overview

When cable trays pass through walls or floors, seal openings using fire-rated penetration sealing materials. maintain spacing or to keep cables in place when the tray is ect the minimum bend ra-dius for cables as they exit the bottom of the cable tray. All illustrations, descriptions and technical information included in this document are provided as indications and can cable trays are equivalent. The mechanical and electrical characteristics, tests, certifications, overall quality management, recommendations mentioned. Cable tray (or cable ladder) systems are a popular alternative to electrical conduit systems, as they have an outstanding record for dependable service, design flexibility and cost savings in commercial and industrial applications.



Horizontal cable tray through-wall treatment



CABLE TRAY SYSTEMS GUIDE

Steel Ladder System Hubbell's NEXTFRAME® Ladder Tray is the effective and widely used cable runway that supports and delivers bundles of cable between cabinets, racks, and closets, along

Technical Specification for Cable tray installation and cable laying work

Approval of IPR shall be obtained for site preparation and marking the cable tray routes and locations of cable tray support before proceeding with the erection and installation work.



Cable Tray Systems: Requirements and Best Practices

Comprehensive guide to cable tray systems requirements: tray types, materials, loading, supports, bonding, routing, and best practices for safe electrical cable management.



How To Use Cable Tray Architecture To Finish A Wall?

This guide provides step-by-step instructions on installing a cable tray on a wall, covering different types of cable trays, tools needed, and safety tips.



Electrical Installations: Cable trays and ladder installation

c) For cable ladders and cable trays passing through the floor slabs and walls, the installation of fire stops shall only be carried out after the utility or



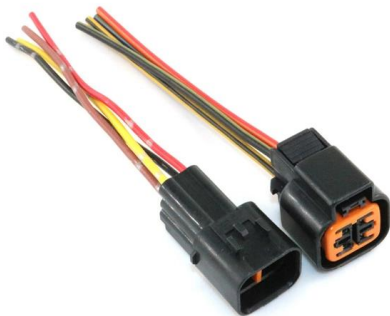
Cable Tray Questions , Cable Tray Institute

That is, each cable tray rung would point in a vertical direction as opposed to the usual horizontal direction. The local electrical inspector has stated that he has no issues with this as long as the



Mastering Cable Tray Installation , Step-by-Step Guide for a Seamless

Learn how to install cable trays correctly. Get the ultimate step-by-step guide on setting up a seamless and reliable cable management system.





B-Line series Cable Tray Design Considerations

As an industry leader in cable tray, Eaton offers one of the widest ranges of cable management solutions available in the market today with its B-Line series portfolio. With unmatched quality and service, we



Cable Laying: Everything You Must Know

After determining the routing of the cabling, a structured cabling project initially needs to consider the laying of cable trays, which can be made of metal, conduit, or

Cable Tray Technical Guide A practical guide to product selection and

Cable tray installed in a hazardous location must contain only those cables that are appropriate for this type of environment as defined in Chapter 5 of the NEC.



Cable Tray Technical Guide A practical guide to product selection and

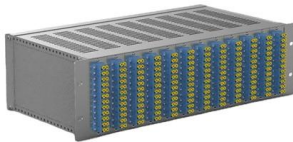
A practical guide to product selection and installation This guide for engineers and installers has been developed by ABB as a practical reference regarding cable tray characteristics, installation, and



Cable Tray Systems



Our cable tray systems securely hold and protect cables and come in many models and sizes, solid bottom and ventilated.



Horizontal Cable Tray System Installation , Telecom System

This article is about Horizontal Cable Tray System Installation of Building Telecom Distribution System as per International Codes and standards.

Best Practice Guide to Cable Ladder and Cable Tray Systems

This publication is intended as a practical guide for the proper and safe* installation of cable ladder systems, cable tray systems, channel support systems and associated supports.



B-Line series Cable Tray Design Considerations

Available in 3, 4, and 6-inch widths with ventilated or solid bottoms, channel cable tray is ideal for smaller instrumentation cables and cable tray runs involving a small number of cables.

CABLE TRAY SYSTEMS GUIDE



Hubbell's NEXTFRAME® Ladder Tray is the effective and widely used cable runway that supports and delivers bundles of cable between cabinets, racks, and closets, along walls, and suspended from



Technical Specification for Cable tray installation and cable laying work

1. Scope :- This specification covers the following major activities; - Fabrication and installation of Mild Steel (MS) support structure for Galvanized Iron (GI) Cable tray. - Installation of perforated GI Cable



Method Statement installation of Cable Trays and Ladders

This method statement covers the site installation of the cable tray & ladders and the requirements of checks to be carried out.



Technical Guidelines for Cable Tray Installation and

When cable trays pass through walls or floors, seal openings using fire-rated penetration sealing materials. Only use fireproof trays for flame containment or





Technical Guidelines for Cable Tray Installation and

1. Route Planning and Layout Principles
Coordinate with Building Structure: Cable tray routing should align with architectural design, avoiding unnecessary



Best practice guide to cable ladder and cable tray

Cable ladder and cable tray systems The following recommendations are intended to be a practical guide to ensure the safe and proper installation of

Cable Tray Systems: A Complete Guide to Types

Discover the essential guide to cable tray systems. Learn about ladder, trough, and wire mesh types, key components, and expert installation tips



Guide to cable support systems

Side heights of 35, 60, 85 and 110 mm are available, through to special cable tray systems with a 30% perforation amount and large insertion and exit points. Depending on the system, screwable or



Cable Tray, Cable Bus, Wire Mesh Cable Trays , MP

Over the following 50+ years of leadership and service, MP Husky has gone through several transformations and mergers, including Husky/Burndy and Metal



Cable Trays

Cable tray helix fittings from Thomas and Betts ease transitions between horizontal and vertical cable tray runs, especially in confined areas and near walls. The



What is a Vertical Cable Tray?

What is a vertical cable tray? This guide explains its types (ladder, solid-bottom), benefits for safety & organization, and key applications in data



GUIDE CABLE TRAYS TECHNICAL

NEMA VE 1-2017 Specifies requirements for metal cable trays and associated fittings designed for use in accordance with the rules of Canadian Electrical Code, Part I and the National Electrical Code®



Cable penetration seals according to European Standards

Cables, cable bundles, conduits, bundles of conduits, empty pipes, cable trays and cable ladders may also pass through penetration seals in walls and floors and



Contact Us

For datasheets, pricing, or custom high-speed optical interconnect solutions, please visit:
<https://www.syropy.com.pl>