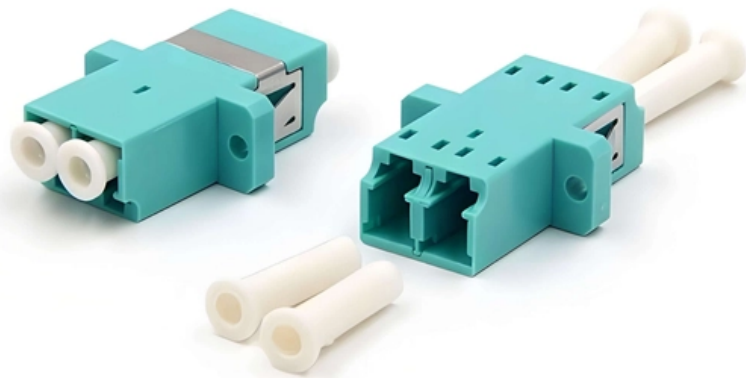


Horizontal cable tray distance





Overview

Horizontal Runs: Cables should be secured at their start, end, and turns, and every 3 to 5 meters along straight horizontal sections. Although BS 7671 touches on the subject of cable supports, it does not detail specifically what these support distances should be. 8 (Other Mechanical Stresses (AJ)) in that document provides requirements for cable support. This spacing is crucial for adequate maintenance access, ease of inspection, and ensuring proper airflow for effective heat dissipation. Cable ladder systems and cable tray systems shall be manufactured in accordance with BS EN 61537, channel support.



Horizontal cable tray distance



Best Practice Guide to Cable Ladder and Cable Tray Systems

This guide covers cable ladder systems, cable tray systems, channel support systems and associated supports intended for the support and accommodation of cables and possibly other electrical

GUIDE CABLE TRAYS TECHNICAL

NEMA VE 1-2017 Specifies requirements for metal cable trays and associated fittings designed for use in accordance with the rules of Canadian Electrical Code, Part I and the National Electrical Code®



Cable Tray Segregation and Clearance Rules

Cable Tray clearances as per Shell DEP - Free download as PDF File (.pdf), Text File (.txt) or read online for free. This document discusses cable segregation rules

B-Line series Cable Tray Design Considerations

For ladder or ventilated trough trays, the total sum of the cross-sectional areas of all the cables to be installed in the cable tray must be equal to or less than the allowable cable area for the tray width, as



Core Principles for Electrical and Instrumentation Cable

2. Minimum Spacing and Segregation Spacing Standards: Electrical (power) and instrumentation (signal/control) cable trays should maintain a minimum vertical

Method Statement installation of Cable Trays and Ladders

This method statement covers the site installation of the cable tray & ladders and the requirements of checks to be carried out.



Cable Support Distances

Cable Support Distances Although BS 7671 touches on the subject of cable supports, it does not detail specifically what these support distances should be. Section 522.8 (Other Mechanical Stresses (AJ))



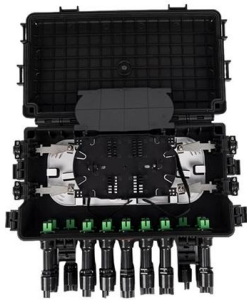
Cable Tray Technical Guide A practical guide to product selection and

Cable Tray Technical Guide A practical guide to product selection and installation This guide for engineers and installers has been developed by ABB as a practical reference regarding cable tray



TECHNICAL AND SIZING DATA

600 mm (24") horizontal clearance on one side of ladder trays mounted adjacent to one another or to walls or other obstructions, where the width of the cable tray installation does not exceed 1 m; and



Cable Tray Spacing Standards for Installation and Safety

How much horizontal space is needed between power cable trays and signal cable trays? To minimize electromagnetic interference (EMI), the horizontal spacing between power and



910533-3_EN

Cable tray types, supports (types and spacing) and securing systems are selected and designed taking into consideration the weight of the cables including reserves, increased by a dynamic shock load of





Cable Tray Support Spacing: Key Guidelines Explained

The NEC requires that cable trays must be supported by members at an interval specified by the cable tray manufacturer, but not more than 5 feet for



Cable Tray SHIB NAL

Securing cables will maintain proper spacing between cables, keep cables in the trays, and confine the cables to specific locations within trays. Those designing and installing the system must determine

Cable Support Distances

This provides distances for cables based on their diameter and cable type. Prysmian was instrumental in providing this information and an extract is provided in this document.



Core Principles for Electrical and Instrumentation Cable

Spacing Standards: Electrical (power) and instrumentation (signal/control) cable trays should maintain a minimum vertical and horizontal distance. Industry



Cable tray separation , Automation & Control Engineering Forum

Cable Tray Separation: In general, physical separation of cable trays for redundant safety-class circuits should be maintained by a minimum of three feet horizontal separation.



Tie Down Practices for Multiconductor Cables in Cable Trays , Cable

The NEC doesn't specify any distances between ties for cables in cable tray wiring systems. This is a decision that must be made by those designing and installing the cable tray wiring systems. It is

Distance between Cable Trays

#2 "Re: Distance between Cable Trays" by North of 60 on 06/12/2008 12:32 PM (score 1) Copy to Clipboard Users who posted comments: Anonymous Poster (1); jobinjosin (2);



Cable Tray Offset Calculator , Vertical, Horizontal & Compound Offset

Calculate horizontal, vertical, or compound cable tray offsets based on bend angle, offset distance, and available installation space. Use this tool to estimate sloped section length, horizontal run



Cable Tray

Any horizontal and/or vertical change of direction can be realized on site with the fittings and the connectors (from page). All changes of direction must be



Typical Design Philosophy of Cable Trays for Power

Cable trays shall be complete with necessary hot dip galvanized sheet steel accessories such as coupler plates, ground continuity connections, clamps, nuts,

Best Practice Guide to Cable Ladder and Cable Tray Systems

Cable ladders and cable trays should be mounted far enough off the floor or roof to allow the cables to exit through the bottom of the cable ladder or cable tray.



Cable tray clearances , Information by Electrical Professionals for

The codes I quoted are for distances between conductors on the tray as that is what I thought you were asking. The codes from 12-2200 are for clearances from a cable tray to other cable



Cable Tray Installation Rules (NEC 392) - Electrical Trader

Here's what you need to know: Cable Types:
Only use conductors rated for open-air
environments, such as Tray Rated (Type TC) or
Metal-Clad (Type MC) cables. Clearances:
Maintain



Contact Us

For datasheets, pricing, or custom high-speed optical interconnect solutions,
please visit:
<https://www.syropy.com.pl>