

Hollowed-out electrical distribution box label





Hollowed-out electrical distribution box label



A comprehensive understanding of distribution box

? Introduction Distribution boxes are at the heart of safe and organized electrical systems--whether in residential, commercial, or industrial settings. But

What are the Requirements for Electrical Panel Labeling?

The labels that are required for electrical boxes will usually focus on two things. The first is going to be safety-related labels. This could be something like a label to indicate how many volts are on a



Labeling Your Electrical Panel , Why It's Important

Labeling Your Electrical Panel: Why It's Important Your electrical panel is the brain of your home's electrical system. An electrical panel consists of

Electrical Safety Labels

Prevent accidents and protect workers with our durable, compliant electrical safety labels. Designed to warn of shock, arc flash, and high-voltage hazards, these labels make it easy to identify electrical



How to Remove a "Knock Out" from an Electrical Box

A "knock out" or "KO" is a partially stamped opening in electrical enclosures that allows quick entry of a wire, cable or pipe via connector or fitting to the interior. With the right information and technique, you should be able to remove a "KO" from electrical panels and other electrical enclosures without

Strategies for electrical labeling and documentation

Learn best practices for documenting and labeling electrical equipment. Offer solutions and tips for electrical distribution system documentation. Consistent documentation is an important safety



Amazon : Breaker Box Labels

Easily label your breaker box with durable, reusable vinyl labels. Find kits with directory, numbered, and icon labels for a complete organizational system.





Wiring regulations: what are the labelling requirements?

Whilst a label isn't specifically required by this Regulation, an easy, clear and professional way to indicate the periodic check would be to place a



A Step-by-Step Guide to Wiring an Electrical Panel Box

Find out how to properly wire an electrical panel box with a comprehensive diagram and step-by-step instructions.



How to Properly Label Your Home's Electrical Panel

Your home's electrical panel might seem like a mystery box tucked away in the garage or basement, but it serves a vital purpose. That metal cabinet with rows of



Electrical Panel Labels and How to Mark Them , Family

Does every breaker in an electrical panel need to be labeled? Find out the answer from an electrical inspector. It's pretty common for labels on electrical



The installation requirements for the distribution box

A distribution box is the heart of any electrical system. It takes the incoming power and safely distributes it to different circuits throughout your



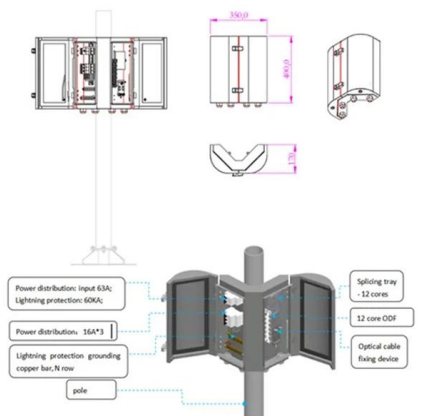
How to Read and Interpret Your Distribution Box Labels

Understand your distribution box labels to identify circuits, improve safety, and troubleshoot electrical issues in your home with confidence.



Electrical Panel Labeling: Clear & Simple Compliance

Learn electrical panel labeling standards, requirements & best ways to label an electrical panel for safety, compliance, and easy identification.



Electrical Hazard Signs & Labels

We have an OSHA sign for just about any requirement. Select from three different material constructions: Pressure sensitive vinyl, Durable plastic or .040 Aluminum with a baked enamel finish.



What Labels Go Where

For What Labels Go Where, see our main page here. Understanding the Importance of Correct Label Placement Labels are a vital part of electrical project documentation. Correct placement isn't just

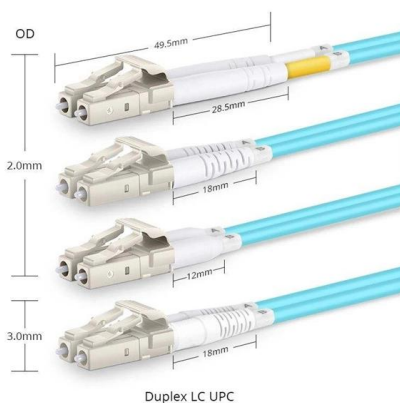


Guideline

Where a distribution frame is located in a substation and is freestanding, the label shall be fixed to the distribution frame and also placed on the inside of the substation door, at a height of approximately

How To Label An Electrical Panel

How To Correctly Label An Electrical Panel Labeling an electrical panel isn't overly complicated, but it'll take a while. The exact time you'll spend



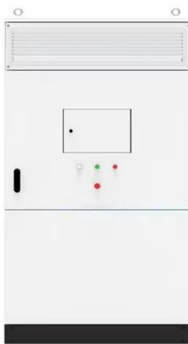
Circuit Numbering and Labeling for Electrical Equipment

This standard describes requirements for numbering and labeling of real property electrical distribution equipment, circuits, and site lighting at Lawrence Livermore National Laboratory.



Getting important labelling right leaves a lasting impression

Seeing a life-sized image of the label before printing eliminates extra tape waste, saves time and helps to ensure the label meets current Regulations, whilst also



Waterproof Electrical Distribution Box, SHPN Series

The Waterproof Electrical Distribution Box, with its high-definition transparent cover, is a transparent panel that not only allows for easy monitoring of the internal

Guideline

In some cases a label displaying the words 'Horizon Power - DANGER - Underground Electrical Cables in the Vicinity' may be required (ref Horizon Power manuals 'Underground Distribution Schemes',



What Is an Electrical Distribution Box? A Complete Guide

An electrical distribution box is a centralized unit responsible for distributing electrical power across multiple circuits within various environments, including residential,



Labeled the Circuit Breakers in our Electrical Panels (guide)

Sometimes there are wires for an extra light fixture under an electrical box cover. Watch out for split outlets (especially if you have two appliances sharing one outlet, because they may be on separate



How To Label An Electrical Panel (The Right Way)

Have you ever wondered which breaker to turn off in your electrical panel? Learn the right way to label your electrical panel from a Master Electrician.

How To Label An Electrical Panel

A clearly labeled electrical panel is essential for a variety of reasons. However, if your electrical panel doesn't feature clear labels, it's time to change



Contact Us

For datasheets, pricing, or custom high-speed optical interconnect solutions, please visit:
<https://www.syropy.com.pl>