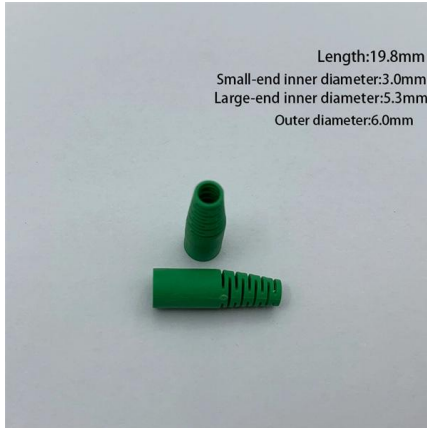


High-voltage ring main unit busbar





High-voltage ring main unit busbar



Types of Busbars & Schemes - Explained with Applications

Understand Types of Busbars and how they make complex power distributions simpler in electrical power distribution,.

Ring Main Units (RMUs), Construction, Working and

A typical ring main unit is essentially an encapsulated medium voltage (11kV - 66kV) bus bar that has provision to either terminate any number of incoming feeders or



Main Differences Between Air Insulated Switchgear and Gas Insulated

The result is a compact medium voltage switchgear solution for space-critical applications. The SF6 ring main unit is a strong example of modern GIS design. This enclosed switchgear seals all busbars,

Ring Main Unit (RMU): Complete Guide for Medium

A Ring Main Unit (RMU) is factory-assembled medium-voltage switchgear for ring-type distribution networks, offering compact design,



The most popular wiring schemes and design essences

RMU wiring schemes and design In terms of operational requirements, it is pretty evident what a customer expects out of a Ring Main Unit - a hassle



XGN66-12 Ring Main Unit - High Voltage Switchgear for 3.6-12kV

Designed for use in two-phase AC 50Hz systems, this advanced Ring Main Unit (RMU) serves as a reliable solution for receiving and distributing electric energy in environments that require

LoRawan outdoor base station



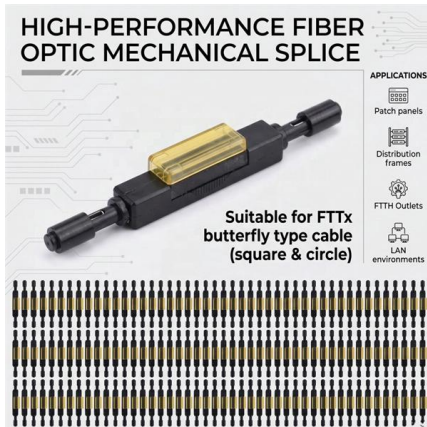
A Practical Guide to the Operation of Ring Main Units

Ring Main Units (RMUs) Ring Main Units are compact modules that are gas-insulated and sealed, comprising main switching devices and ancillary



China Ring Main Unit Suppliers, Manufacturers

Ring Main Unit (RMU) Definition The RMU (Ring Main Unit) cabinet, also known as a medium voltage cabinet, is a comprehensive electrical apparatus designed to interconnect, measure, and incorporate



SafeRing & SafePlus , ABB

It is built as a three-phase encapsulated and arc-resistant solution for both single and double busbar applications, achieving a high classification of Loss of Service Continuity LC2A and partition class PM.



What is a Ring Main Unit (RMU)? Working Principle

RMUs typically operate at voltage levels ranging from 7.2kV to 36kV, with the most common ratings being 12kV, 17.5kV, and 24kV. They are designed



TAMCO: The Switchgear Specialist

Ring Main Units RMU is a compact, sealed, and metal-enclosed switchgear used in medium voltage electrical distribution networks. The term "ring main" refers to the



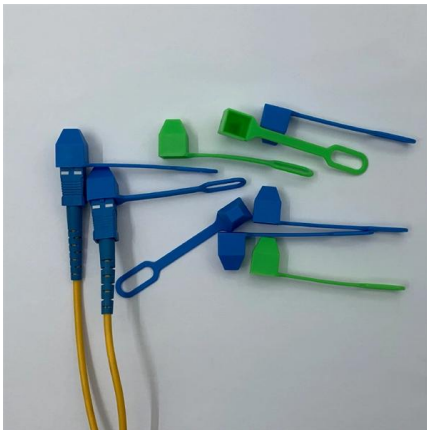
What is a Ring Main Unit (RMU)? Working Principle

The Ring Main Unit (RMU) has emerged as a critical component in medium-voltage power distribution networks, particularly in urban environments



Ring Main Units

An example of ring main switch positions is shown below. The key points to consider with ring main systems are: Ring main units' busbars are continuous Switches



Ring Main Units (RMUs) in Power Distribution Systems:

Load switch-based high-voltage switchgear has become increasingly prevalent across non-ring distribution systems; hence, the term "Ring Main Unit"



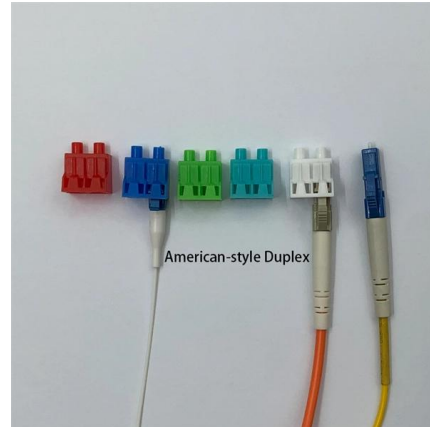
Environmentally Friendly Gas-Insulated Ring Main Units: SF6-Free

1. Introduction SF6 has long dominated medium-voltage (MV) gas-insulated switchgear due to exceptional insulation and arc-extinguishing properties.



Medium Voltage Switchgear

Medium Voltage Switchgear Our medium voltage switchgear largely serves utilities, industry and infrastructure often providing the required medium-voltage link between high-voltage transmission



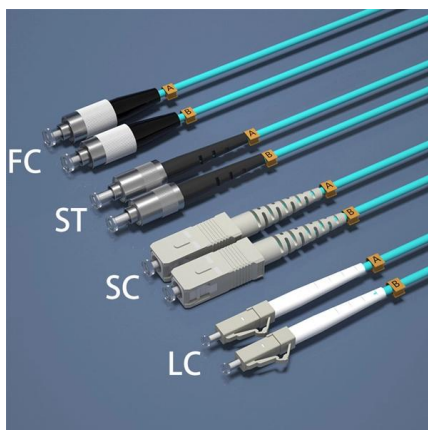
Ring Main Unit (RMU) - VPCPL Energy

A ring main unit (RMU) is a factory assembled, metal enclosed set of switchgear used at the load connection points of a ring-type distribution network. It includes

What Is a Ring Main Unit (RMU)? Functions and

It is a high-voltage switchgear housed in a metallic enclosure--either stand-alone or modular in design--where each unit functions as a part of the

Various specifications optional



Ring Main Units

Ring main units (RMU) are widely used in industry and for distribution systems. RMUs operate independently, which means that it is possible to earth an



Six common bus configurations in substations up to 345 kV

Comparison of bus configurations This technical article explains six most common bus configurations used for distribution, transmission, or switching



Busbar Electrical System Explained: Types, Applications

Discover how a busbar electrical system works, including busbar types, applications, and key design factors. Learn why electric busbars are

Ring Main Unit Working Principle

Ring Main Units (RMUs) are a vital component of medium-voltage power distribution networks, ensuring reliability, safety, and continuity of electrical



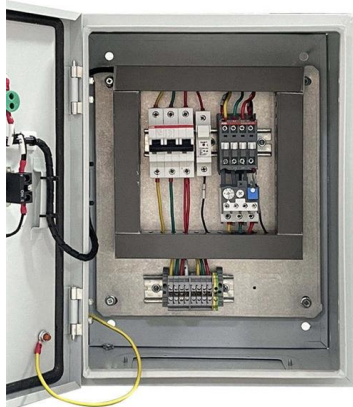
A Practical Guide to the Operation of Ring Main Units

Ring main switches are connected between the internal bus bar and the cable as shown in Figure 3 and incorporate either an internal earth function or



Ring Main Units (RMUs) in Power Distribution Systems:

Practical Applications of Ring Main Units Since their introduction, RMUs have quickly become popular, particularly among new industrial



Ring Main Unit (RMU)

It is basically a small sized switchgear unit enclosed completely within a cabinet and consists of disconnectors, fuses, and circuit breakers. Read this

What Is a Ring Main Unit (RMU)? Functions and

Defining the Ring Main Unit (RMU) The "Ring Main Unit" (RMU) is the cornerstone of the ring network distribution strategy. It is a high-voltage



Ring Main Units (RMUs), Construction, Working and

The Ring Main Unit (RMU) The ring main unit, with its new compact design and SF 6 arc quenching technology, has been a relatively recent entrant in the distribution



Ring Main Unit (RMU)

Ring Main Unit (RMU) is a switchgear device used in secondary distribution systems, i.e., between the distribution substation and the end



Contact Us

For datasheets, pricing, or custom high-speed optical interconnect solutions, please visit:
<https://www.syropy.com.pl>