

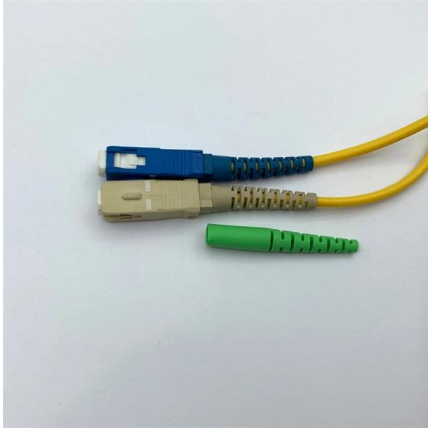
# **High-voltage and low-voltage cable trays**





## High-voltage and low-voltage cable trays

---

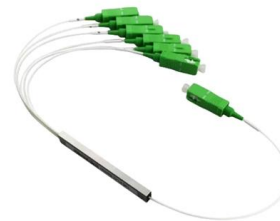


### Selecting Cable Trays: A Complete Guide for Cable

Low-Voltage: Steel or aluminium trays are typically sufficient. Medium/High-Voltage: Prioritize trays with excellent heat dissipation properties,

### Ultimate Guide to Cable Tray Selection - Types,

Learn how to choose the best cable tray system for your needs. Explore types, materials, installation tips, and NEC compliance in this expert guide.



### Good practice rules for electromagnetic compatibility

Metal cable tray and prefabricated trunking enable the geometrical separation of circuits and functions and also compliance with minimum

### A Beginner's Guide to LV Panels, Switchgears, and

Types of Switchgear: Low Voltage (LV) Switchgears: For homes and small businesses. Medium Voltage (MV) Switchgears: Used in factories and



### Cable Tray

Explore precision-engineered Wire Mesh Tray built from high-quality welded steel, offering a safe, reliable pathway for low-voltage and data cables

### Type of Cable Tray

The main benefits of steel cable tray are its high strength and low cost. Disadvantages include high weight, low electrical conductivity and relatively poor corrosion resistance.



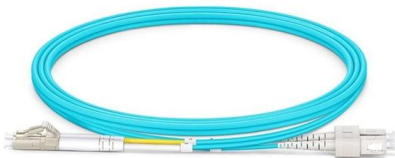
### Core Principles for Electrical and Instrumentation Cable

In industrial settings, electrical and instrumentation (E& I) cable trays or bridge racks play a critical role in organizing and supporting power, control, and signal cables



## The Complete Guide to Cable Trays , Snake Tray

The cables themselves may be copper twisted pair, coaxial, fiber, ethernet, low voltage, or high voltage wires.

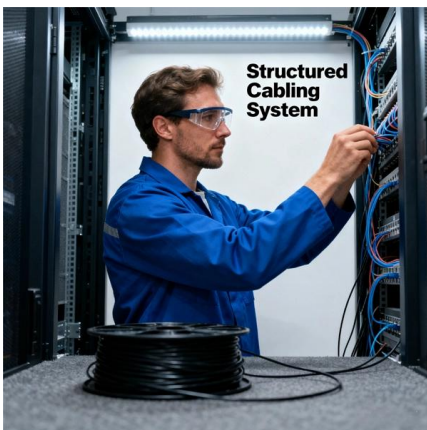


### Cable tray

ABB designs and manufactures cable tray systems, including perforated tray, cable ladder, channel tray and strut (metal framing).

### Cable Tray , Wire Mesh, Ladder Tray and More Wire Management

Cable trays and baskets are designed to help support and route cable bundles in an organized manner along ceilings or walls. Shop for cable tray systems now.



### How to Choose Cable Tray for High Voltage System

Discover key engineering considerations on selecting cable tray for high voltage system, covering ampacity derating, material standards, EMI



## **Cable Tray Technical Guide A practical guide to product selection and**

Cable Tray Technical Guide A practical guide to product selection and installation This guide for engineers and installers has been developed by ABB as a practical reference regarding cable tray



### **Cable Tray Types and Sizes**

These cable tray systems serve as efficient alternatives to traditional wireways and electrical conduits, which fully enclose cables. Designed to support and protect all

### **HOW TO CHOOSE THE RIGHT CABLE TRAY**

At Madsen Steel Wire, we can manufacture large quantities of high-quality cable trays with our new Schlatter MG950 wire welder, which allows us to shorten lead times and speed up delivery for our



### **7 Types of Cable Trays: How to Choose the Right One**

Cable tray systems are engineered support structures designed to route, support, and protect insulated electrical cables used for power distribution,



## Cable Trays: Select The Right Tray for Every Job

Learn how to select the right cable trays for every job using Snake Tray's extensive cable management systems product line.



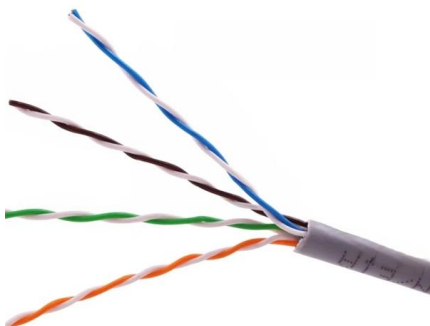
### STAINLESS STEEL CABLE CONTAINMENT, SUPPORT, CABLE



Stainless steel cable tray (304 and 316 grades) provides high strength, non-corrosive cable containment and support for low and high voltage power, control and instrumentation cables.

### Core Principles for Electrical and Instrumentation Cable

Layered Separation: Strong current and high-voltage cables are positioned apart from low-current, low-voltage instrumentation cables. Layered separation reduces



### Cable Tray Technical Guide A practical guide to product selection and

A practical guide to product selection and installation This guide for engineers and installers has been developed by ABB as a practical reference regarding cable tray characteristics, installation, and



## Cable Trays: Select The Right Tray for Every Job

Today the Snake Tray product line has grown into a complete ecosystem of cable management solutions, each optimized for different



### Types of Cable Trays - Advantages, Applications and Sizes

8. Solid Bottom Cable Tray Solid bottom cable trays are fully enclosed and provide maximum protection for sensitive cables, especially in dusty or corrosive environments. Advantages:

### Annexure D

Cables and cable support systems for extra-low voltage and low voltage must be designed and constructed conforming to the General Electrical Requirements and this Annexure. Specific earthing



### CABLE TRAY SYSTEMS GUIDE

The total load supported by the cable tray, uniformly distributed. This will be the combined weight of all of the cables or tray contents, any environmental loads (snow, ice, dust) and any concentrated static



## Contact Us

---

For datasheets, pricing, or custom high-speed optical interconnect solutions,  
please visit:

<https://www.syropy.com.pl>