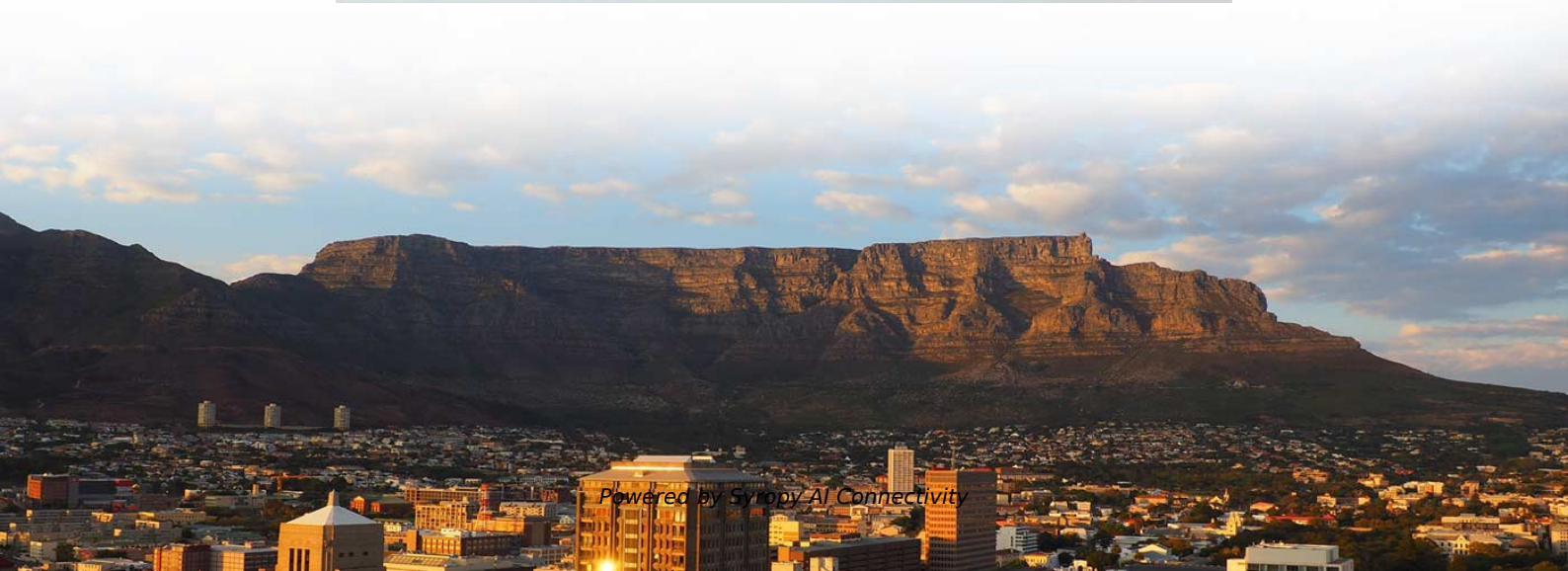
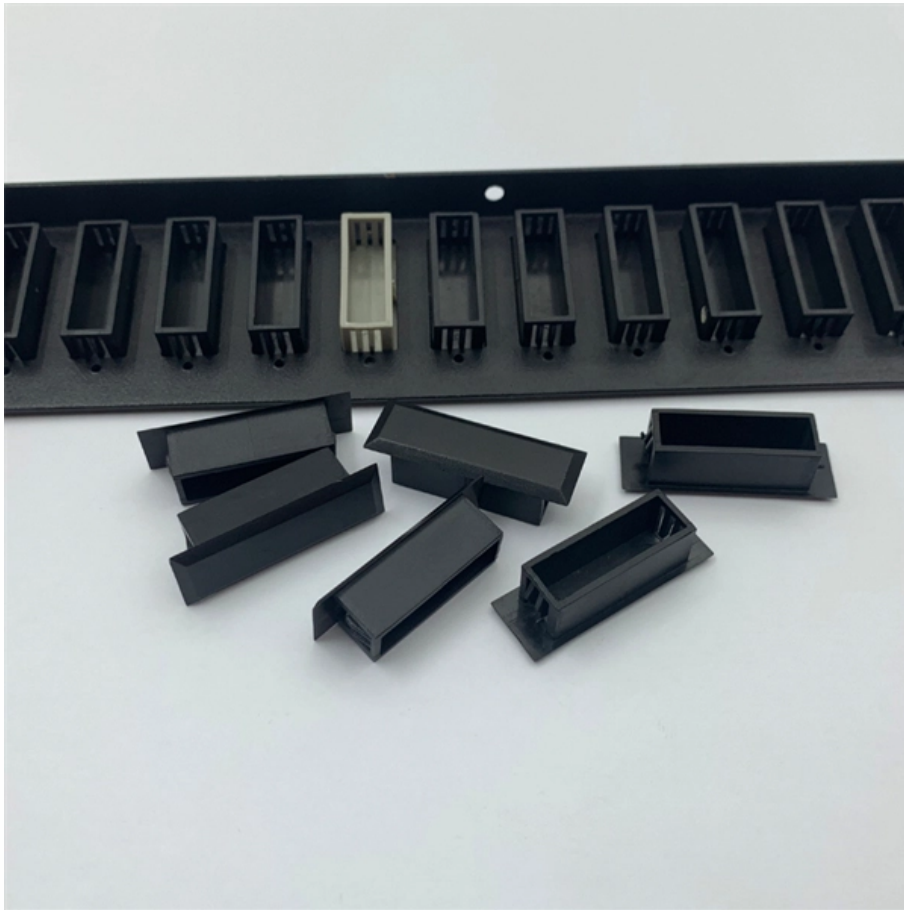


# **High-precision erbium-doped fiber amplifiers for airports**





## High-precision erbium-doped fiber amplifiers for airports

---



### **MATLAB simulation for optimization of Erbium-Doped fiber amplifier**

The present research paper develops a comprehensive MATLAB simulation-based optimization technique for enhanced performance of Erbium-Doped Fiber Amplifiers. The study

### **Tao SHUI , Professor (associate) , Doctor of Philosophy**

We propose a scheme for high-precision two-dimensional (2D) atom localization via the four-wave mixing (FWM) in a four-level double- atomic system.



### **High fiber-to-fiber net gain in erbium-doped thin film lithium niobate**

Miniaturized erbium-doped waveguide amplifiers attracted great interests in recent decades due to their high gain-efficiency and function-scalability in the telecom C-band. In this work, an erbium

### **Erbium-doped Fiber Amplifiers - Buying Guide & Suppliers**

This erbium-doped fiber amplifiers buying guide provides technical background, comparison of major types, selection criteria, and an overview of suppliers.



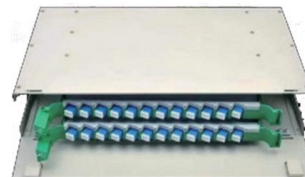
### **Erbium-Doped Fiber Amplifiers (EDFAs): Foundations**

EDFAs support multi-channel amplification over long distances, making them a foundational technology in global fiber-optic communication



### **Design Optimization for Efficient Erbium**

This paper optimized several of erbium doped fiber parameters to obtain high performance characteristic at pump wavelengths of  $\lambda_p = 980$  nm and  $\lambda_s = 1550$  nm for three different pump powers.



### **A photonic integrated circuit-based erbium-doped amplifier**

We demonstrate a photonic integrated circuit-based erbium amplifier reaching 145 milliwatts of output power and more than 30 decibels of small-signal





### **PM Double-Clad Fibers for High Power Lasers and Amplifiers**

As a result, a high concentration of Yb ions can be incorporated while maintaining good conversion efficiencies. These attributes of Yb doped fibers, along with the advent of double-clad fiber (DCF)



### **Advances in fiber-optic-based 3D shape sensing technology**

Fiber-optic shape sensing technology is fundamentally based on establishing a precise relationship between physical deformations and optical signals by analyzing non-uniform strain

### **Numerical analysis and optimization of high power single frequency co**

A comprehensive numerical analysis and optimization of a high-power, fully monolithic, single frequency co-doped erbium-ytterbium fiber amplifier designed for free-space optics



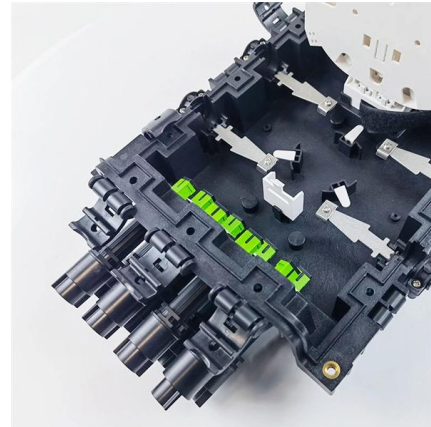
### **Composition of two optical analogs K9 (Ce free) and K509 (Ce doped)**

We investigated the X-ray radiation impact on the performances of "backup" Erbium Doped Fiber Amplifiers (EDFAs) and Erbium-Ytterbium Doped Fiber Amplifier (EYDFA).



### Fiber-optic Pump Combiners

Pump combiners couple light into double-clad fibers of high-power fiber lasers and amplifiers, allowing the use of multiple pump sources.



### 10-W-level monolithic dysprosium-doped fiber laser at 324 $\mu\text{m}$

We report the high-efficiency operation of a 3.05  $\mu\text{m}$  dysprosium-doped fluoroindate glass fiber laser that is in-band pumped at 2.83  $\mu\text{m}$  using an erbium-doped fluorozirconate glass fiber laser.

### Simultaneous distance and AOA measurement scheme based on

Accounting for the cumulative insertion losses from various components within the optical link, an erbium-doped fiber amplifier (EDFA, Conquer KG-EDFA-B) is employed to boost the optical power



### Erbium doped fiber amplifier Import Data Global

Erbium Doped Fiber Amplifier Import data is a record of global trade transactions involving Erbium Doped Fiber Amplifier products. It includes shipment details like HS code, importer/exporter names,



### Hydrogen sulfide in precision medicine: connecting basic science

By introducing an erbium-doped fiber amplifier, researchers have increased the laser power to 1.4 W. This breakthrough has greatly improved the sensitivity of the near-infrared QEPAS, allowing the



### Rare Earth Elements and Real-Time Synchronization: Materials, Risks

Consider optical transport: erbium-doped fiber amplifiers (EDFA) are the backbone of long-haul and metro fiber, and they ensure timing distribution signals can traverse long distances without

### Erbium doped fiber amplifier

For example, the erbium-doped fiber devices have been extraordinarily successful due to their low noise, high and broad optical gain, and would continue to



### Thorlabs, profile with contact details and 55 photonics

Information of Thorlabs Appears on the Following Pages Company profile (this page) Pages with Suppliers of Products autocorrelators, chirped mirrors, chromatic



## Higher-Order Mode Pumping in Erbium-Doped Fiber Amplifiers

Abstract: Erbium-doped fiber designs are currently constrained by the general requirement to guide only one mode at the pump and signal wavelengths. Parameters such as the core diameter and



### An Extensive Library of Self-Developed Products



## Multi-wavelength fiber laser incorporating enhanced four-wave mixing

A multi-wavelength fiber laser simultaneously incorporating enhanced four-wave mixing and Brillouin random lasing resonance is proposed to generate broadband Brillouin frequency



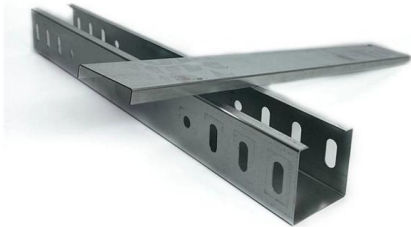
## Coherent Announces Industry-First Specialty Optical Fiber for

Coherent offers a diverse range of complimentary erbium-ytterbium co-doped fibers, which are customized with various compositions, numerical apertures, and large-mode fields to suit



### **Broadband multi-wavelength fiber laser with double Brillouin frequency**

Abstract A double Brillouin frequency shifted broadband multi-wavelength fiber laser based on intensity-controllable Brillouin random resonance is proposed and demonstrated. An erbium-doped fiber



### **Popular Erbium Doped Fiber Amplifier Manufacturers in Thrissur**

Erbium Doped Fiber Amplifier Manufacturers in Thrissur Erbium Doped Fiber Amplifiers (EDFAs) have become integral components in modern optical communication systems, particularly in long-haul

### **Nonlinear Fiber Optics**

Erbium-doped fiber amplifiers revolutionized the design of fiber-optic communication systems, including those making use of optical solitons, whose very existence



### **Design of Multi-Mode Erbium-Doped Fiber Amplifiers for Low Mode**

Abstract--Erbium-doped fiber amplifiers for 12 signal modes (six spatial modes in two polarizations) are studied by numerically solving multi-mode rate equations. Mode-dependent gains are compared for



### **High fiber-to-fiber gain low noise figure erbium doped waveguide**

Erbium doped waveguide amplifiers (EDWAs) with performance approaching fiber amplifiers (i.e., net fiber-to-fiber gain ( $\sim 17$  dB), noise figure ( $\sim 6$  dB) and off-chip output power ( $\sim 15$  dBm) in the



## **Contact Us**

---

For datasheets, pricing, or custom high-speed optical interconnect solutions, please visit:

<https://www.syropy.com.pl>