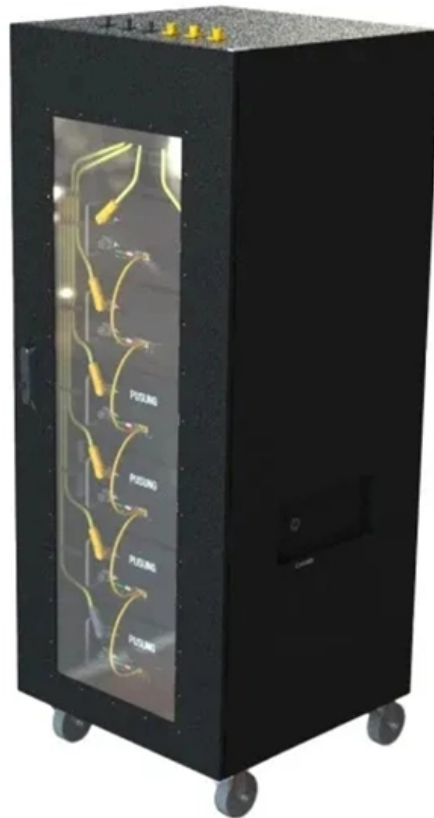




Syropy AI Connectivity

High-precision customization process for emergency communication fiber optic cable junction boxes





High-precision customization process for emergency communication



MR398-JB Fiber Optic Junction Boxes

MR398-JB series fiber optic junction boxes are designed to join two fiber optic cables and environmentally protect the connection. The junction boxes are designed to

Ensuring Connectivity: A Comprehensive Guide to

During emergency preparedness in maintaining fiber optic cables, various restoration strategies can be implemented to minimize downtime and

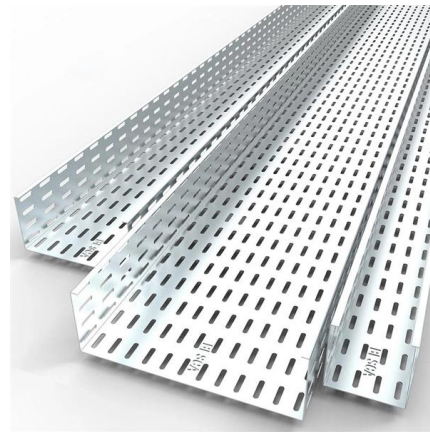


CFX ITS Inspection Reference & Training Manual

3.0 OVERVIEW OF PULL AND BOXES AND FIBER OPTIC MANHOLES Pull and junction boxes and fiber optic manholes (FOMHs) are integral to any conduit system. They are typically installed in an

Fiber Optic Cables

Fiber Optic Cables, Adaptors, & Accessories Our extensive offering of fiber optic cables, connectors, cassettes, enclosures, patch cords, cable assemblies, cable



How FS Make Custom Fiber Connectivity Solutions for Clients

Discover how FS end-to-end process, from in-depth consultation and precision design to rigorous validation, and then delivers tailored MTP®, standard, armored, and industrial fiber jumpers



Emergency call box system over optical fiber

The emergency call system over optical fiber transmission allows voice and control data communications between the roadside emergency call boxes and the



24 Hour Emergency Fiber Optic Cable Repair

JIP Telecom's Tactical Command unit, Fibre Optic Cable Repair Call Out Service is available 24/7 by calling us directly at 403-612-4490. Emergency restoration is





Fiber Optic Emergency Stops Provide Crucial Safety

Whitepaper Summary Emergency stops are essential for keeping workers safe and machinery operational when a worst-case scenario arises, but traditional



WordHTML

WordHTML - Online Converter, Editor and Cleaner
Free online Word to HTML converter with built-in code cleaning features. Open, edit and save Word

Making a quick connection in explosive atmospheres

In both offshore and land-based natural gas and oil rigs, multi-channel high-speed fiber optic cable is required to control automation as well as monitor equipment status and communicate



Fiber Termination Box Installation & Maintenance Guide

Learn everything about fiber termination boxes--types, installation steps, and maintenance tips to ensure reliable fiber optic network performance.



2-Hour Fire Rated Fiber Optic Cable for Emergency

Utilizing 2-hour fire-rated fiber optic cables in Emergency Responder Communication Enhancement Systems provides a reliable, efficient, and safe way to ensure

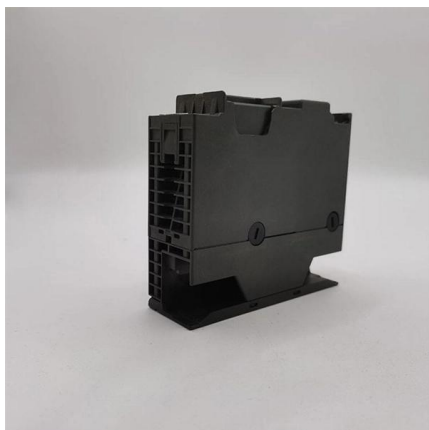


Fiber Optic Junction Box Installation Guide

When fibre optic cable is used, glands must be suitably certified for use with the type of cable so as to maintain the type of protection (Ex db/Ex tb). one thread adaptor when an adaptor is used. A blankin

FUNCTIONAL REQUIREMENT SPECIFICATION (FRS) FOR

1.2. Scope ptical fiber as the primary media between railway control room and sockets provided along with the track. The system will be used by loco pilots/train managers in case accide t and other



Special Buyers Guide Edition Fiber Optic Interconnects

Our fiber optic cable assembly team can integrate these ruggedized, military-grade fiber optic technologies into turnkey cable and harness assemblies--terminated, tested, and ready for



APPENDIX

Lateral fiber optic cables are permitted in traffic signal and illumination junction boxes when the end-device is owned and operated by the City of Bellevue. All other applications will require a dedicated



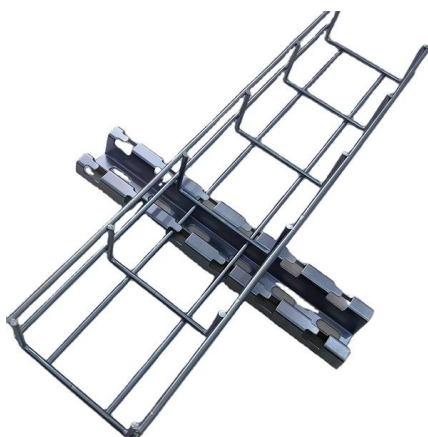
Fiber Optic Solutions

Whether the application calls for a high-precision fiber optic interconnect or a junction box design, AFSI's engineers and technicians are capable of developing the fiber optic system solution to meet your



Top 5 Waterproof Joint Boxes for Fiber Optic

Image Source: unsplash In Fiber Optic Communication, the Waterproof Joint Box serves as a critical element in protecting optical fiber connections from



Fiber-Optic Junction Boxes , New Equipment Digest

The junction boxes have a maximum temperature rating of -40°C to +100°C and provide IP65 ingress protection -- or else limited by the fiber-optic cable and



Termination Box For Fiber Optic Cable In Mumbai

Business listings of Fiber Optic Termination Boxes, Fiber Box manufacturers, suppliers and exporters in Mumbai, ?????? ??????? ?????????? ?????? ??????????,



Master Your Fibre Optic Installation: Step-by-Step Best Practices

Fiber optics cables offer unparalleled reliability and high speeds, making them a cost-effective solution for modern communication needs. Due to these advantages, fiber optics have



Fiber Optic Emergency Stops Provide Crucial Safety Solutions for

Fiber optic emergency stops advance these safety capabilities in challenging and dynamic applications. This white paper will discuss how e-stops work, the standards that govern them and how fiber optic e



Emergency Control Centre Fibre Optics - High-Availability Networks

Realisation of high-availability emergency control centre fibre interconnection follows a structured project workflow. Following requirements analysis and cable route planning, splice





FUNCTIONAL REQUIREMENT SPECIFICATION (FRS) FOR Emergency Communication

1.1. FOREWORD: 1.1.1. The purpose of this document is to define the functional requirements for the implementation of an emergency communication system over the Indian Railways network using



Understanding Fiber Optic Junction Boxes: A Comprehensive

By following best practices in installation and maintenance, you can ensure a reliable and high-performance fiber



Emergency Restoration (Fiber Optics)

Digital communications, Failure rates of fiber optic systems, Optical network failure causes, Connectors, Inspection and cleaning, Using an inspection scope,

REINFORCED VIRGIN PVC TRUNKING
Superior Crush Resistance

	37.6MPA Tensile Strength		2856MPA Elastic Modulus
	9.8KJ/M² Impact Strength		1.54G/CM Density



Hands-On Fiber Optic Emergency Restoration

To do this efficiently, technicians need training on the cable, closures, and splicing techniques unique to their fiber optic plant. This class is designed to increase the technician's confidence and competence,



Fiber Optic Cable Installation Process: Connecting Homes

The fiber optic cable installation process, meaning connecting homes with internet service, is becoming increasingly critical and important to understand.



Contact Us

For datasheets, pricing, or custom high-speed optical interconnect solutions, please visit:
<https://www.syropy.com.pl>