

High-precision coarse wavelength division multiplexers for campus networks





High-precision coarse wavelength division multiplexers for campus



CWDM Network: Technology Overview and Common Applications

Coarse Wavelength Division Multiplexing (CWDM) Network: Technology Overview and Common Applications In the realm of optical networking, Coarse Wavelength Division Multiplexing

What is CWDM (Coarse Wavelength Division)

Coarse Wavelength Division Multiplexing (CWDM) is an optical networking technology that increases the bandwidth of existing networks. Learn

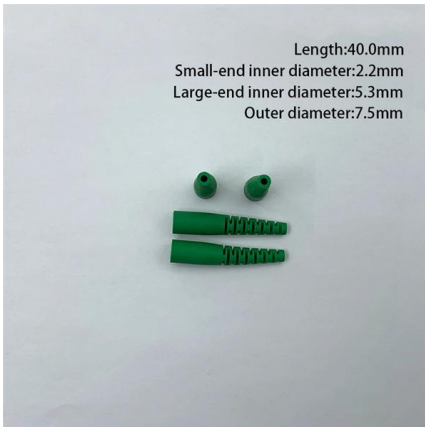


Ultra-compact and high-performance four-channel

Here, a four-channel CMZI wavelength-division (de)multiplexer based on novel Bezier-shape DCs with compact footprints, broad bandwidths and

CWDM (coarse wavelength division multiplexing)

Coarse Wavelength Division Multiplexing (CWDM) is a technology used in fiber optic communication networks to increase the bandwidth capacity of a single optical fiber by transmitting



Wavelength Division Multiplexing: Enhancing Fiber Networks

The sophisticated management of wavelengths is paramount, particularly in environments such as data centers where high-traffic data needs to be transmitted efficiently.

WDM: Everything You Need to Know

CWDM and DWDM Coarse wavelength division multiplexing (CWDM) and dense wavelength division multiplexing (DWDM) are the two types of WDM



The Technology and Application of Coarse Wavelength

Compared with Dense Wavelength Division Multiplexing (DWDM), Coarse Wavelength Division Multiplexing (CWDM) has a better performance-to-price



Introduction to Coarse Wavelength Division Multiplexing (CWDM)

Coarse Wavelength Division Multiplexing (CWDM) is a proven, reliable, and cost-effective alternative that can extend the capacity and reach of the existing passive fiber optic plant to support many



Dense Wavelength Division Multiplexing

Dense Wavelength Division Multiplexing (DWDM) refers to the combination of multiple signals on the same fiber by using optical filters and laser technology. It allows for the transmission of a large

SpectraMux® CWDM , OEM Optical Communication Solutions , Corning

Corning's coarse wavelength division multiplexers (CWDMs) are integrated optical modules that mux or demux multiple optical signals of different wavelengths in a single fiber. Our CWDM products



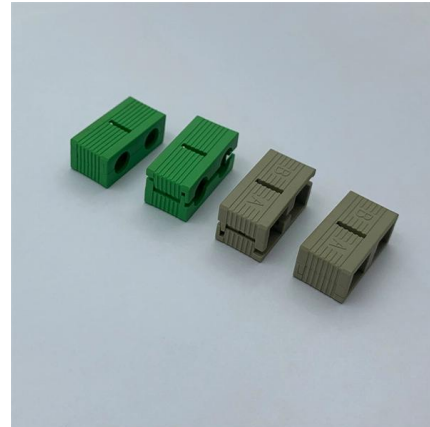
High-Performance Wavelength Division Multiplexers Enabled by Co

Here, we develop a novel design approach that co-optimizes inverse-designed wavelength division multiplexers and distributed Bragg gratings to achieve ultra-low crosstalk without compromising



Coarse Wavelength Division (De)Multiplexer Based on Cascaded

We propose a coarse wavelength division (de)multiplexer by cascading wavelength filters. Assisted by topology optimization, four compact wavelength filters centered at different wavelengths are

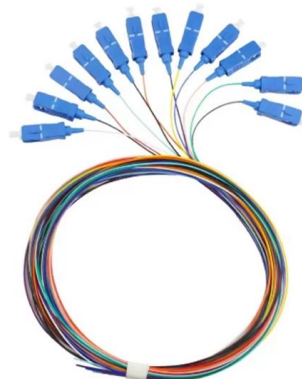


Wavelength-Division Multiplexing

Wavelength Division Multiplexing (WDM) is defined as an approach that multiplexes multiple wavelength channels from different end-users into a single fiber, facilitating the transmission of various services

Wavelength Division Multiplexing - WDM, coarse,

It details the two main standards: coarse WDM (CWDM), with few channels and wide spacing for applications like metropolitan networks, and dense WDM (DWDM),



Wavelength Division Multiplexing - WDM, coarse,

Wavelength division multiplexing is a multiplexing technique working in the wavelength domain. It is commonly used in the area of optical fiber communications.

What is CWDM (Coarse Wave Division Multiplexing)?



Coarse wave division multiplexing (CWDM) allows several signals to be transmitted simultaneously at various wavelengths via a single optical cable.



What Are CWDM, DWDM and FWDM?

What is CWDM? Coarse Wavelength Division Multiplexing (CWDM) The CWDM increases fiber optic cable bandwidth in networking and



COARSE WAVELENGTH DIVISION MULTIPLEXER

The lead-time for special Fiber length will be longer.



Parallel wavelength-division-multiplexed signal transmission and

Here we propose a scalable on-chip parallel IM-DD data transmission system enabled by a single-soliton Kerr microcomb and a reconfigurable microring resonator-based CD compensator.



Dense Wavelength Division Multiplexing

5.1.1 Coarse wavelength-division multiplexing and dense wavelength-division multiplexing
Wavelength-division multiplexing (WDM) enables multiple-shift usage of transmission fibers by transmitting a



CWDM and DWDM explained

CWDM vs DWDM explained: key differences and when to use each
Wavelength Division Multiplexing (WDM) allows multiple data streams to be transmitted

Ultra-compact and high-performance four-channel

Using cascaded Mach-Zehnder interferometers (CMZIs) provides an attractive option for realizing coarse wavelength-division (de)multiplexing



Performance optimization of Band Pass Filters and Wavelength

The growing demand for compact, high-speed, and spectrally precise components in next-generation communication systems poses significant challenges in the design and optimization of

Understanding CWDM: Coarse Wavelength



Explore CWDM (Coarse Wavelength Division Multiplexing) and its significance in optical networks. Learn how CWDM differs from DWDM and its



Research on Optimization and Application of Wavelength Division

This paper discusses in detail the wavelength division multiplexing (WDM) technology, which effectively increases the communication capacity and transmission speed by simultaneously transmitting

What is CWDM Understanding Coarse Wavelength

Enter Coarse Wavelength Division Multiplexing (CWDM), a powerful and accessible optical networking technology. But what exactly is CWDM, and



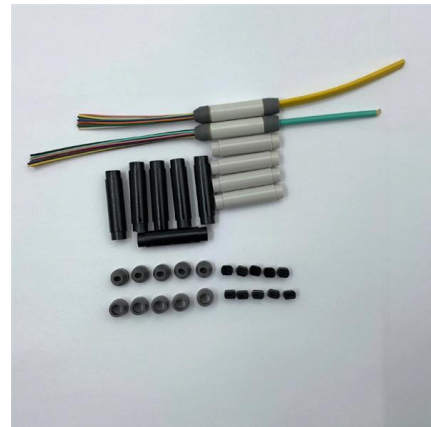
Coarse Wavelength Division Multiplexers

Description The Coarse Wavelength Division Multiplexer (CWDM) series by GKER Photonics Co., Ltd is engineered to meet Telcordia standards, incorporating advanced thin film filter technology and state



Design analysis for wave length division multiplexing

Wavelength division multiplexing WDM, has long been the preferred method for transferring massive volumes of data between locations. By enabling



Contact Us

For datasheets, pricing, or custom high-speed optical interconnect solutions, please visit:
<https://www.syropy.com.pl>