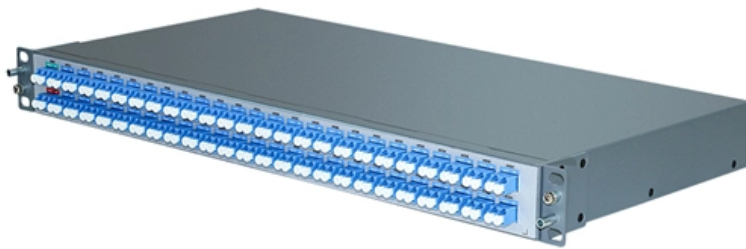


# **Height of the electrical distribution box at the entrance**





## Overview

---

The proper installation of a distribution box involves placing it at the right height to ensure safety and convenience. The National Electrical Code (NEC) provides comprehensive safety standards for electrical installations, including requirements for electrical panels (main service panels and subpanels or breaker box). ALL DIMENSIONS ARE CONSIDERED FROM FINISHED FLOOR AND, UNLESS NOTED OTHERWISE, SHALL NOT VARY. Finding the right spot for a consumer unit sounds basic, but you'd be surprised how many boards end up mounted next to the ceiling above a downstairs toilet where you can't even get the steps near enough to reach it, or shoved so low in a cupboard that homeowners need to crawl on the floor to reset.



## Height of the electrical distribution box at the entrance

---



### Optimal Height for Installing Electrical Panels: A Detailed Guide

Explore comprehensive insights on the appropriate height for mounting electrical panels, abiding by the NEC standards for

### Electric Code Circuit Breaker Panel Box Requirements

The National Electric Code (NEC) includes the minimum standards for installing a circuit breaker panel box. These standards set the minimum safety

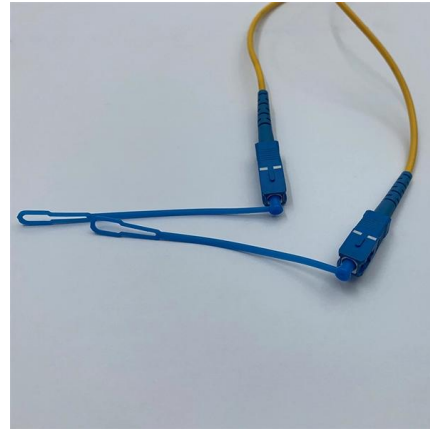


### Article 1.10

Exception: Where electric enclosures covered by 1.10.5 are part of an industrial wiring system operating under conditions of maintenance and supervision that ensure that only licensed electrical practitioner

### What is the Ideal Installation Height for a Distribution Box

Install a distribution box at 4.5 to 5.5 feet high for safety, accessibility, and compliance. This height ensures easy use and protection from hazards.

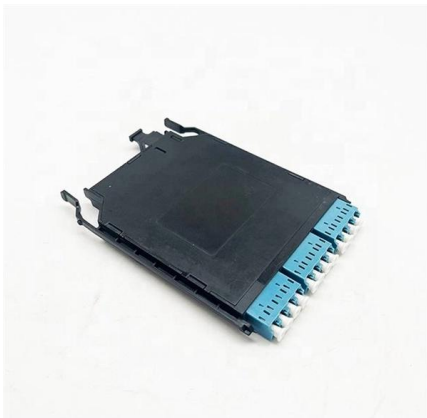
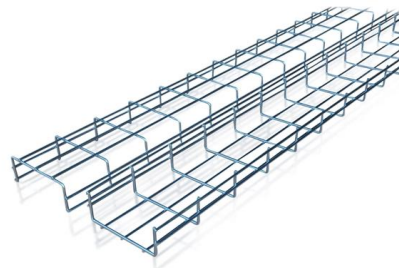


### **Safety Clearance Recommendations for Electrical Panel**

Clearance Tables includes working space and clearance around indoor electrical panel, Circuit Board (NES 312.2), clearance for conductor entering

### **NEC Requirements for Panelboards and Load Centers**

If the height of the electrical equipment is less than 6.5 feet, but when mounted, the top of the equipment exceeds 6.5 feet, the minimum workspace height shall be



### **What Is the Required Breaker Box Height From the Floor?**

The vertical clearance for this working space must be clear from the floor up to a height of 6 feet 7 inches (2.0 meters), or the height of the equipment, whichever is greater.



## What is the Ideal Installation Height for a Distribution Box

The proper installation of a distribution box involves placing it at the right height to ensure safety and convenience. Mounting it 4.5 to 5.5 feet (1.4 to 1.7 meters) high



## Service Entrance and Service Drop , Electrical Academia

Service Entrance and Service Drop Key Takeaways Understanding residential electrical service components is crucial not only for ensuring safe and efficient

## Size determination, installation method and wiring mode

The distribution box is the central hub of the home circuit and the general control of our daily power consumption. It is an indispensable electrical equipment. If there



## Electrical Panel Location Rules , Angi

The electrical panel delivers all your electricity needs, but it might ruin your aesthetic. Here are the electrical panel location rules so you can choose the



## The installation requirements for the distribution box

The distribution box shall be installed horizontally and vertically. After the box is placed, the perpendicularity of the box shall be found with ruler board to meet the requirements.

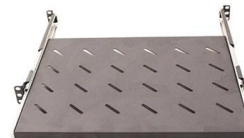


## Embedded Installation Of Distribution Box

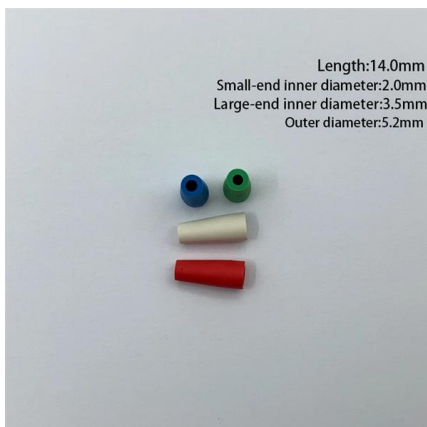
According to the installation size of wall mounted (surface mounted) terminal combination electrical appliances, first drill bolt holes or embedded wood bricks, then open the upper cover of the

## Installation requirements for distribution boxes

Distribution boxes shall be made of non-combustible materials; open distribution boards may be installed in production places and offices with low electric shock risk; enclosed cabinets shall



Webit Cabling



## Where to Fit a Consumer Unit: Correct Height, Access

Learn the correct consumer unit height and placement under BS 7671 and Part M. Avoid common installation mistakes and ensure accessibility, safety,

## Standard Heights for Electrical Installations



The document provides guidelines for mounting heights for electrical switch sockets, light switches, and MCB distribution boards. It specifies the heights for different



### **MOUNTING HEIGHTS FOR ELECTRICAL DEVICES ELECTRICAL**

ALL DISTRIBUTION PANELS AND PANEL BOARDS SHALL BE LABELED ON THE PANEL CABINET WITH THE PANEL NAME AND THE POWER SOURCE FEEDING THE PANEL AS PER THE

### **1910.303**

At least one entrance not less than 610 mm (24 in.) wide and 1.98 m (6.5 ft) high shall be provided to give access to the working space about electric equipment.



### **How to Choose the Right Location for Your Electrical**

Electrical panels cannot be placed anywhere near the material that ignites easily for instance clothes closets. The Best Electrical Panel Locations



### Installation points of household distribution box

The distribution box of household distribution box should not be installed too high. Generally, the installation elevation is 1.8m to facilitate operation; the electric pipe

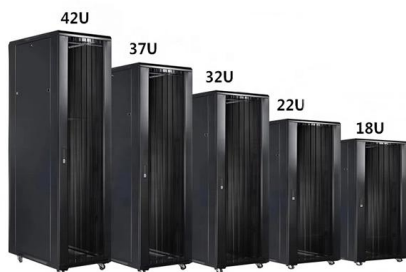


### What is the code minimum height for an electrical panel?

But there is a maximum height allowed for an electrical panel, which is based on the height of the highest breaker switch in the panel. It's set at 6'-7" above the floor, with an exception

### What is the installation height of distribution box?

The outdoor distribution box should be firmly installed on the bracket or foundation. The height of the bottom of the box should not be less than 1.0m from the ground, and measures should



### Are There Restrictions On Where To Mount A

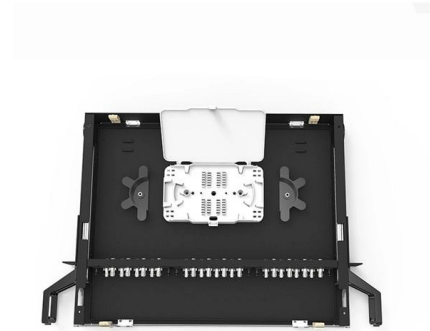
Service Entrance Location Service Entrance Location There are restrictions on where the service entrance may be located, and this will affect

### Electrical Panel Mounting Height



**Requirements: General**

Editor's Note: read part XIX here NEC Requirements for electrical panel mounting height One way to help safeguard people from hazards arising from electricity use



**Electrical Rooms**

Transformer vaults must remain free of other systems not associated with electrical distribution systems. Transformer vaults shall be located as close as possible to the building's service entrance. Main

**Electrical Panel Mounting Height Requirements: General**

In the 1999 NEC, a new subsection covered working space height. The requirement was changed to permit other equipment associated with the electrical installation



**Meralco Service Entrance Standards Guide , PDF**

The document discusses electrical safety standards for residential buildings in the Philippines. It defines the service protective device as the first safety switch or



## Standard Heights for Electrical Switches

Standard heights of Electrical switch boards and fittings - Free download as PDF File (.pdf), Text File (.txt) or read online for free. This document provides standard



## Contact Us

---

For datasheets, pricing, or custom high-speed optical interconnect solutions, please visit:  
<https://www.syropy.com.pl>