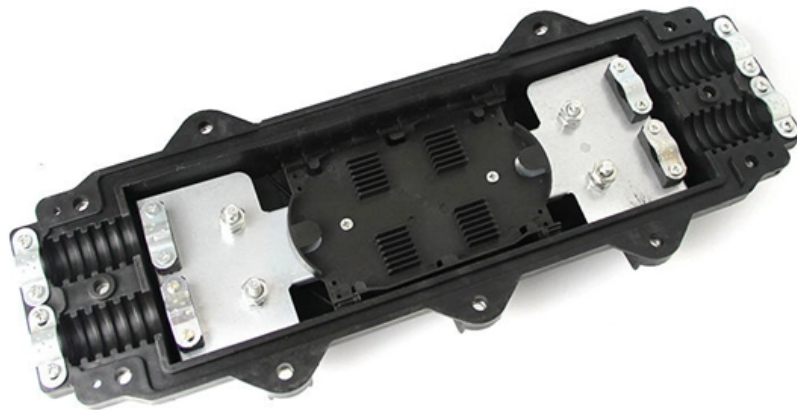


Height of the cable tray from the top of the cabinet





Overview

Top Clearance: The top of the cable tray should maintain a minimum distance of 0. In practice, cable tray dimensions are a system of interrelated measurements —width, depth, length, and material thickness—that directly affect cable fill compliance, heat dissipation, structural loading, and long-term expandability. All illustrations, descriptions and technical information included in this document are provided as indications and can cable trays are equivalent. The mechanical and electrical characteristics, tests, certifications, overall quality management, recommendations mentioned. maintain spacing or to keep cables in place when the tray is ect the minimum bend ra-dius for cables as they exit the bottom of the cable tray. Hubbell's NEXTFRAME® Ladder Tray is the effective and widely used cable runway that supports and delivers bundles of cable between cabinets, racks, and closets, along walls, and suspended from ceilings.



Height of the cable tray from the top of the cabinet



Bestier 59 Inch Executive Office Desk with Four Drawers, Keyboard Tray

Shop Bestier 59 Inch Executive Office Desk with Four Drawers, Keyboard Tray & File Storage for Home Office Gray products at Best Buy. Find

VEVOR

Product Name: Cubby Mobile Tray Storage Cabinet, 20-Compartment Cubby Storage Shelf, Cubby Storage Cabinet 4 x 5, Classroom Cubbies
Color: Natural Dimensions Product Height: 30 inches



Cables Direct Online 1U 19" Vented Cantilever Server Rack Shelf 10

Shop Cables Direct Online 1U 19" Vented Cantilever Server Rack Shelf 10" (250mm) Deep Steel Tray, 11 lb Max Capacity Black products at Best Buy. Find low everyday prices and buy online for delivery

Mastering Cable Tray Installation , Step-by-Step Guide for a Seamless

Learn how to install cable trays correctly. Get the ultimate step-by-step guide on setting up a seamless and reliable cable management system.

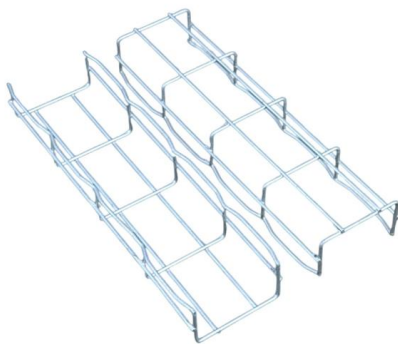


Cable Tray Spacing Standards for Installation and Safety

Height Above Ground: Cable trays should ideally be installed at least 2.2 meters above the ground. Top Clearance: The top of the cable tray should

Cable Tray Installation

Learn everything about cable tray installation with our complete guide. Discover types, steps, and safety tips for efficient electrical cable management.



CABLE TRAY SYSTEMS GUIDE

Some applications may require the cable tray to support the weight of a single, dead object in addition to the cable loads. Specifications typically require this to be applied at the midpoint of the span between



TN28: Installation Guidelines for the use of Waterfalls and Cabinet

Any tray that is at height of 500mm or more above the cabinet entry point also requires a length of vertical tray or basket to support the cable into the cabinet.



GUIDE CABLE TRAYS TECHNICAL

NEMA VE 1-2017 Specifies requirements for metal cable trays and associated fittings designed for use in accordance with the rules of Canadian Electrical Code, Part I and the National Electrical Code®

Cable Tray and Reels , Wire and Cable Management

Fast installation with dependable support. Everything you need to build a cable management system, including Cablofil wire mesh cable tray, ladder cable tray,



A Guide to Installing and Supporting Electrical Cable Trays

A professional guide to installing electrical cable tray systems per NEC Article 392. Covers support, securing cables, and fill calculations.



Cable Tray Dimensions and Specifications as per NEC

The entire amount of the cross-sectional areas for all of the single conductor cables that are going to be positioned in the cable tray needs to be

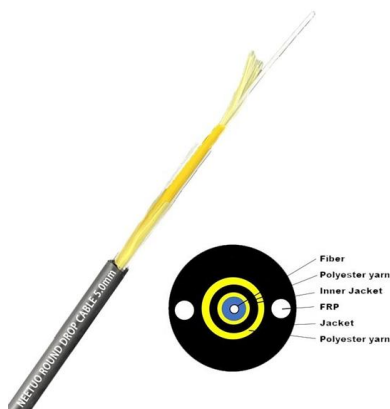


GENERAL INFORMATION

In vertical installations, the weight of the suspended cable creates a tensile load on itself and is the factor, from a cable perspective, that limits the height of vertical installation for a tight buffer cable.

Cable Tray Dimensions Guide: Standard Sizes, Tray

We will first explain standard cable tray dimensions used across the industry, then examine how dimensions vary by tray type, and finally show how to



Cable Tray Dimensions and Specifications as per NEC

Many electrical systems employ cable trays. They route cables safely & efficiently. NEC defines minimum cable tray size & electrical installation



Section 27 05 36 Cable Tray for Communications Systems

3.2.11 When the pathway is overhead, wire mesh cable tray should be installed with a minimum clearance of 12" above and below (between tray and top of rack/cabinet) the tray.



Complete cable tray manual for electrical engineers and

Complete cable tray manual for electrical engineers and designers (on photo: power cable management ladder tray systems assembled aluminum cable tray ladder

Best practice guide to cable ladder and cable tray

Cable ladder and cable tray systems The following recommendations are intended to be a practical guide to ensure the safe and proper installation of



Cable Tray Size Calculation for Project Engineers

Cable tray size calculation is important for ensuring safe cable installation, proper heat dissipation, and enough spare capacity for future



Essential Principles for Cable Tray Access Path Setup

Safety Principle for Cable Tray Access Path Setup
Safety should always be the top priority when designing a cable tray access path. A safe path



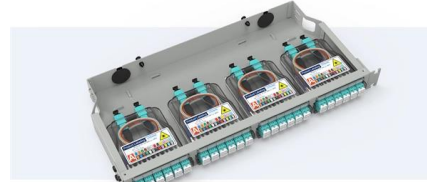
Cable Tray Technical Guide A practical guide to product selection and

The choice of method should be discussed with a local inspector. The best decision may be to extend only the cables, creating a discontinuity in the cable tray.



Pre-Terminated Patch Panel

- Multi-application support
- Flexible configuration
- Modular design



Cable Gland Plug
28mm Cable Gland Plug



MPO LC up to 96 cores
MPO direct connection 48 ports



Mounting Bracket
Semi-open mounting holes

Cable Tray Width, Dimensions and Specifications as per

Learn about cable tray width dimensions and specifications as per NEC standards. Understand types, sizes, materials, and installation guidelines for safe and



B-Line series Cable Tray Design Considerations

If these cables above would completely fill a 30-inch wide cable tray, selecting a 36-inch wide tray in your design would make space available for future cables.



Cable Tray Size and Dimensions: How to Choose the

Learn how to calculate the perfect cable tray size and dimensions for your electrical project. This guide covers load capacity, fill ratios, and industry

Wall Mount Cabinet Server Racks



Best Practice Guide to Cable Ladder and Cable Tray Systems

This guide covers cable ladder systems, cable tray systems, channel support systems and associated supports intended for the support and accommodation of cables and possibly other electrical

Contact Us

For datasheets, pricing, or custom high-speed optical interconnect solutions, please visit:
<https://www.syropy.com.pl>