

H3C Switch Port Optical Mode





H3C Switch Port Optical Mode



Support

You can connect the S5120-SI series to end users or wiring-closet switches through gigabit Ethernet copper ports, and to Layer 3 switches through gigabit Ethernet fiber-optic ports or link aggregation.

Support

1 Port Correlation Configuration The term switch in this document refers to a switch in a generic sense or an access controller configured with the switching function unless otherwise specified. When



Switches-H3C

Data Center Switches Campus Network Switches AON Network Industrial Switches Ultra-wideband: 400 G Based on the industry-leading 400 G platform, H3C

H3C S1600V2 Switch Series Web Configuration Guide

Loop detection--When the system detects a loop on a port, it does not take any actions on the port, but it will display a red icon for the port on the port state pane.



H3C All-Optical Network Technology White Paper-6W100

In contrast, the EPON-based POL solution leverages the EPON OLT's enhanced Ethernet forwarding and switching capabilities. iOptic network devices H3C provides an extensive array of iOptic Ethernet



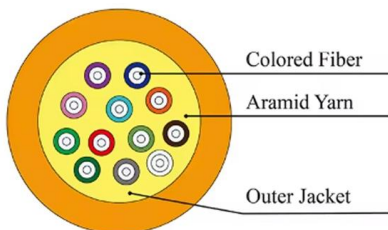
H3C Device Optical Copper Multiplexing Port Configuration Guide

In H3C network devices, a combo port (optical-copper multiplexing port) is a multifunctional interface that integrates two physical media: optical fiber and copper cable.



How to Master H3C Device Switch Commands: A

Ready to optimize your network management? Explore our comprehensive guide to H3C device switch commands. Upgrade your skills and



Home Support Switches S3600 Series Configure & Deploy Configuration Guides H3C S3600 Series Ethernet Switches Operation Manual-Release 1510 (V1.04)



H3C S5850 Series 48-Port GbE Hybrid Ports Flexible

Flexible port combination The H3C S5850-54QS switch host supports the curing of 48 Gigabit power, 4 10 Gigabit optical and 2 40GE ports, providing the most cost



Support

01-Access Volume Home Support Switches H3C S7500E Switch Series Configure & Deploy Configuration Guides H3C S7500E Series Ethernet Switches Operation



Support

You can specify a Combo port to operate as an electrical port or an optical port. That is, a Combo port cannot operate as both an electrical port and an optical port

How To Read Optical Module Information



On H3C Switches

Optical modules are widely used in switches, network cards, routers, and other communication equipment. Reading optical module information during use helps understand its real-time operating

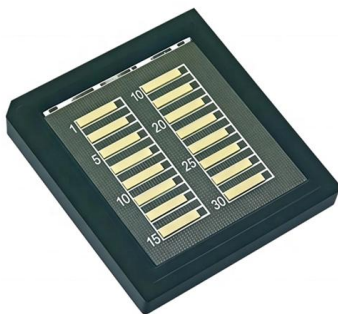


Support

By default, such an optical port operates at 1000 Mbps in full-duplex mode. If its rate is configured as 100 Mbps, you are recommended to configure it to operate in full-duplex mode.

H3C Device Optical Copper Multiplexing Port Configuration Guide

In H3C network devices, a combo port (optical-copper multiplexing port) is a multifunctional interface that integrates two physical media: optical fiber and copper cable. The combo enable copper and combo



download.h3c

Hier sollte eine Beschreibung angezeigt werden, diese Seite lässt dies jedoch nicht zu.

1 Connecting your switch to the network This chapter describes how to connect your switch to a network. The first time you access a switch you must log in through the console port. On the switch,



Support

port link-mode port link-mode interface-list port-mode reset counters interface shutdown speed Layer 2 Ethernet interface configuration commands broadcast-suppression display port-group manual group



Support

Home Support Switches H3C S3100 Switch Series Reference Guides Command References H3C S3100-52P Ethernet Switch Command Manual-Release 1500 (V1.01)



800G Silicon Photonic Switches: Revolutionizing AIGC

H3C's 800G CPO silicon photonic data center switch, H3CS9827-64EO, has a single-chip 51.2T switching capacity, supports 64 800G ports, and



Optical Transceiver Manufacturer, H3C



H3C switch configuration description: Due to the use of port parameters, the port will be taken as a reference, that is, at this time, port E0 / 1 only allows PC1 to access



Optical Transceiver Manufacturer, H3C Switch

am user-bind ip-address 10.1.1.2 mac-address 00e0-fc22-f8d3 H3C switch configuration description: the above configuration completes the global binding of



In-Depth Analysis Report on 800G Switches , FiberMall

H3C is particularly aggressive in next-generation optical packaging, aiming to overtake via technological innovation. S9827 series: Covers multiple



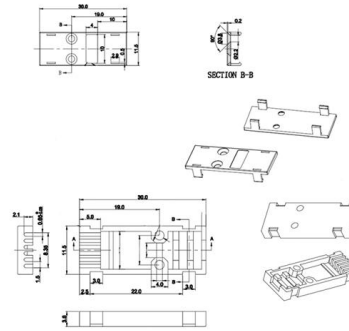
H3C Switch Command Mastery: Streamlined

This article provides a hands-on guide to 50+ essential H3C switch commands, revealing hidden shortcuts and best practices derived from real-world



H3C S9500 SERIES SWITCH COMMAND MANUAL

View and Download H3C S9500 Series command manual online. Routing Switches. S9500 Series switch pdf manual download.

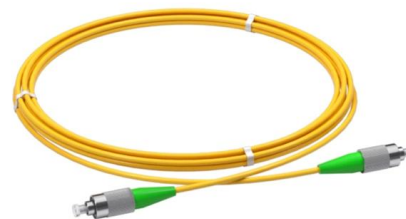


Support

Optical fiber Optical fiber Optical fibers are widely used in fiber-optic communications, which are advantageous for long-distance communications. Optical fibers can be classified into the following

H3C S1600V2 Switch Series Web Configuration Guide

Verifying that the local and remote ports are consistent in rate and duplex mode ate and duplex mode information, see "Port Info." If the local and remote ports are incons



Support

Home Support Switches H3C S9500 Series Switches Reference Guides Command References H3C S9500 Command Manual-Release1648 [v1.24]-01 IP Access Volume





H3C confirms performance of its new 800G CPO

H3C completed a massive test of its co-packaged optics (CPO) enabled Ethernet switch (H3C S9827) driving traffic across 64 800G ports. The



Contact Us

For datasheets, pricing, or custom high-speed optical interconnect solutions, please visit:
<https://www.syropy.com.pl>